

CROSSGRIP PVC

Roof walkway matting in PVC material

A two layer roof walkway matting that protects the roof membrane and provides safe access for general maintenance works. Compatible with various roof surfaces.

Made from non-porous PVC with cross directional top ribs and a 'diamond cut' surface for a firm underfoot grip, Crossgrip PVC carries a 0.6/0.5 slip resistant rating under ASTM 1677.

Impermeable in all weathers, Crossgrip is highly specialized matting system for flat roofs, gantries and high level walkways. When laid flat, it will remain stable in winds up to 60 mph-96 km/h*.



BENEFITS

Certified slip resistance DIN 51130:R10 ASTM 1677: 1.0/0.9

Excellent drainage DIN 51130:V10

Roof membrane protection

Compatible with PVC roof membranes

Quick to install

Contours to the roof structure

Loose lay, no fixing required

Long life

FEATURES

Diamond cut pattern

Two layer construction

Durable one piece construction

PVC construction

Supplied in 33' (10m) rolls

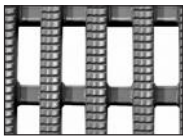
Made from flexible PVC

Stable in winds up to 60mph (96km/h)*

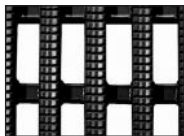
UV resistant

* Tests at the University of Hertfordshire, School of Aerospace, Automotive & Design Engineering showed Crossgrip PVC when laid flat on a stable platform remained in position for wind speeds of 94mph (150km/h).

STANDARD COLORS



LIGHT GRAY



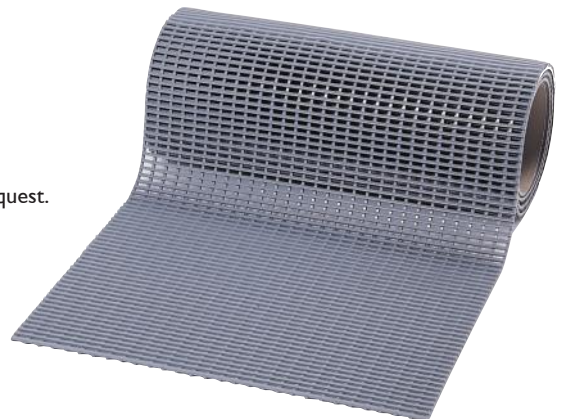
BLACK

Other colors available on request.

STANDARD SIZES

PRODUCT	HEIGHT	STANDARD ROLL OPTIONS**		
Crossgrip PVC	9/16" (14mm)	2' x 33' (0.6 x 10m)	2' x 33' (0.91 x 10m)	4' x 33' (1.22 x 10m)

**Contact us for custom dimensions.



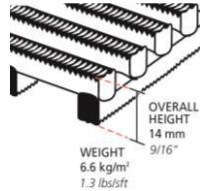
Plastex Mattinc Inc., 120 55th Street NE Fort Payne, AL 35967 U.S.A.
Sales Tel: 256.845.7725

Web: www.plastexmatting.com

PRODUCT DATA SHEET: Crossgrip PVC

SIZES & WEIGHTS

<i>All dimensions are nominal</i>	Height (in)	Length (ft)	Widths (ft)			Weight (lbs/sq.ft)
<i>Tolerances</i>	<i>+/- 0.05"</i>	<i>0+1.0'</i>	<i>+/- 1/2"</i>			
Crossgrip PVC	9/16"	33'	2'	3'	4'	1.3



GENERAL

- APPEARANCES** Open grid “duckboard” design with cross directional top ribs.
- COLORS** Available in homogenous standard colors; Light Gray and Black. Other colors available on request.
- DURABILITY** One piece welded construction for long life and minimal maintenance.
- INSTALLATION** Loose laid*. PVC ramp edging available in 2 1/2" and 4" widths, for use with Crossgrip PVC.
- WORKABILITY** Flexible construction is easy to cut and shape on site. Supplied in rolls with top ribs facing upwards. Requires inverting once rolled out prior to use.
- USES** Specifically engineered for roof walkways.

TECHNICAL DATA

- ACOUSTIC** Excellent sound absorption properties.
- CHEMICAL** Resistant to most acids, alkalines and oils (for specific chemical resistances, see www.plastexmatting.com/uploads/4/4/0/0/44003899/pvc-chemical-resistance.pdf)
- COMPOSITION** Flexible Polyvinyl Chloride (PVC).
- ENVIRONMENT** It has been determined under the guidelines for the State of California Safe Drinking Water and Toxic Enforcement Act of 1986 (Prop 65), that no warning labels or information provision are required for Crossgrip PVC.
Black color is manufactured with our post-industrial recycled material. The recycled content averages at least 30%, but we strive for 100% where possible.
Plastex does not use any substances currently included in the SVHC (*Substances of Very High Concern*) list under R.E.A.C.H.* in any matting products. Crossgrip PVC is 100% recyclable.
* Registration, Evaluation, Authorisation and Restriction of CHEMical substances
- FIRE** EN13501-1: 2007 - Cfl S1
- HYGIENE** Non-porous 100% Virgin PVC - Inhibits the growth of bacteria.
- REVERSION** Thermoplastic shrinkage can result in size reductions up to 2%. Accelerated in hot environments. Refer to www.plastexmatting.com/uploads/4/4/0/0/44003899/vinyl-matting-dimensional-stability.pdf
- SLIP RESISTANCE** ASTM F 1677 (Dry/Wet): 1.0/0.9 DIN 51130: R10, V10
- THERMAL** Functional -9° F +140° F (slight size variation may occur at temperature extremes).
- UV LIGHT** Resistant to PVC degradation.
- WARRANTY** 5 years. See www.plastexmatting.com/uploads/4/4/0/0/44003899/warranty.pdf
- WIND RESISTANCE** *When loose laid, Crossgrip PVC is effective for winds up to 60mph. In Laboratory conditions on a flat stable platform at The University of Hertfordshire, School of Aerospace, Automotive & Design Engineering, Crossgrip PVC remained stable in wind speeds up to 94mph (150 km/h).



PRODUCT DATA SHEET: Crossgrip PVC

ANCILLARIES



9/16" x 2 1/2" x 33'
(14mm x 60mm x 10.1m)

2 1/2" PVC edging strip

Supplied in rolls of 33' (10.1m) length with cold welding paste.

Colors: Black, Dark Gray, Dark Brown, Holly Green, Oxford Blue, Yellow



9/16" x 3 3/4" x 33'
(14mm x 100mm x 10.1m)

3 3/4" PVC edging strip

Supplied in rolls of 33' (10.1m) length with cold welding paste.

Colors: Black, Dark Gray, Yellow



5/8" x 1 13/16" x 6'6"
(15mm x 45mm x 2m)

1 13/16" Aluminum edging strip

Supplied in sections of 6'6" (2m) length with fixing screws and plugs.

Colors: Anodized Aluminum, Powder Coated Yellow



Small floor hook

For securing sections of matting to floor. Supplied in packs of 10 with screws and plugs.



9/16" x 8'2"
(14mm x 2.5m)

Snap Track

2 part snap track can be welded to join rolls end to end or side to side for large area covering. Supplied with cold welding paste.

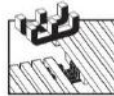
Color: Dark Gray



Connector clips - Side to end

For joining sections of matting together side to end.

Supplied in packs of 10.



Connector clips - Dual purpose

For joining sections of matting together side to side or end to end.

Supplied in packs of 10.