

## Roof walkway matting in PVC material

A two layer roof walkway matting that protects the roof membrane and provides safe access for general maintenance works. Compatible with various roof surfaces.

Made from non-porous PVC with cross directional top ribs and a 'diamond cut' surface for a firm underfoot grip, Crossgrip PVC carries a high R10 slip resistant rating under DIN 51130.

Impermeable in all weathers, Crossgrip is highly specialised matting system for flat roofs, gantries and high level walkways. When laid flat, it will remain stable in winds up to 60 mph-96 km/h\*.



### BENEFITS

Certified slip resistance DIN 51130: R10 ASTM 1677: 1.0/0.9

Excellent drainage DIN 51130: V10

Roof membrane protection

Compatible with PVC roof membranes

Quick to install

Contours to the roof structure

Loose lay, no fixing required

Long life

### FEATURES

Diamond cut pattern

Two layer construction

Durable one piece construction

PVC construction

Supplied in 10m rolls

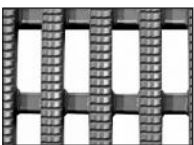
Made from flexible PVC

Stable in winds up to 60mph (96km/h)\*

UV resistant

\* Tests at the University of Hertfordshire, School of Aerospace, Automotive & Design Engineering showed Crossgrip PVC when laid flat on a stable platform remained in position for wind speeds of 94mph (150km/h).

### STANDARD COLOURS



LIGHT GREY



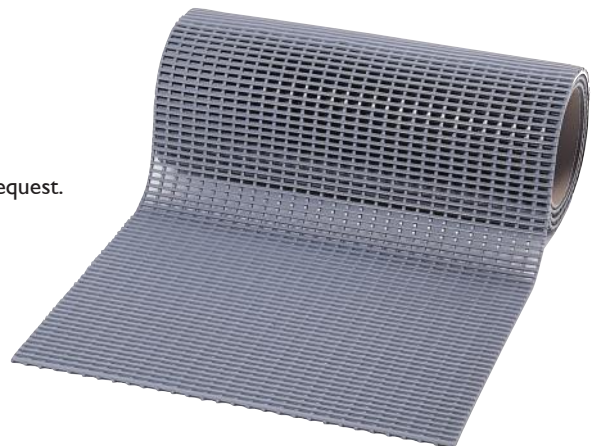
BLACK

Other colours available on request.

### STANDARD SIZES

PRODUCT	HEIGHT	STANDARD ROLL OPTIONS**		
Crossgrip PVC	14mm (9/16")	10 x 0.6m (33' x 2')	10 x 0.91m (33' x 3')	10 x 1.22m (33' x 4')

\*\*Contact us for bespoke dimensions.

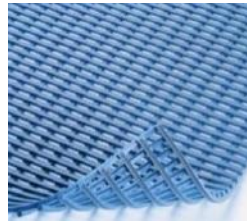
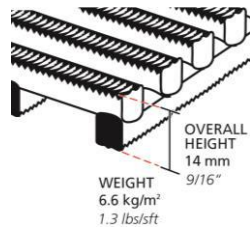


# PRODUCT DATA SHEET: CROSSGRIP PVC

Aug-18

## SIZES & WEIGHTS

All dimensions are nominal	Height (mm)	Length (m)	Widths (cm)		Weight (kg/m <sup>2</sup> )
Tolerances	+/- 0.5	0+0.3	+/- 1		
Crossgrip PVC	14	10	60	91 122	6.6



## GENERAL

APPEARANCES	Open grid "duckboard" design with cross directional top ribs.
COLOURS	Available in homogenous standard colours; Light Grey and Black. Other colours available on request.
DURABILITY	One piece welded construction for long life and minimal maintenance.
INSTALLATION	Loose laid*. PVC ramp edging available in 6cm and 10cm widths.
WORKABILITY	Flexible construction is easy to cut and shape on site. Supplied in rolls with top ribs facing outwards. Requires inverting once rolled out prior to use.
USES	Specifically engineered for roof walkways.

## TECHNICAL DATA

ACOUSTIC	Excellent sound absorption properties.
CHEMICAL	Resistant to most acids, alkalines and oils. For specific chemical resistances, see <a href="http://www.plastexmatting.com/uploads/4/4/0/0/44003899/pvc-chemical-resistance.pdf">www.plastexmatting.com/uploads/4/4/0/0/44003899/pvc-chemical-resistance.pdf</a>
COMPOSITION	Flexible plasticised Polyvinyl Chloride (PVC).
ENVIRONMENT	Black colour is manufactured with our post-industrial recycled material. The recycled content averages at least 30%, but we strive for 100% where possible. Plastex does not use any substances currently included in the SVHC ( <i>Substances of Very High Concern</i> ) list under R.E.A.C.H.* in any matting products. Crossgrip PVC is 100% recyclable. * Registration, Evaluation, Authorisation and Restriction of Chemical substances
FIRE	EN ISO 13501 - I : 2007 - CfI - SI
HYGIENE	Non-porous 100% PVC - Inhibits the growth of bacteria.
REVERSION	Thermoplastic shrinkage can result in size reductions up to 2%. Accelerated in hot environments. Refer to <a href="http://www.plastexmatting.com/uploads/4/4/0/0/44003899/vinyl-matting-dimensional-stability.pdf">www.plastexmatting.com/uploads/4/4/0/0/44003899/vinyl-matting-dimensional-stability.pdf</a>
SLIP RESISTANCE	ASTM F 1677 - Dry/Wet: 1.0/0.9 DIN 51130: R10, V10
THERMAL	Functional -23 <sup>0</sup> C +60 <sup>0</sup> C (slight size variation may occur at temperature extremes).
UV LIGHT	Resistance to PVC degradation.
WARRANTY	5 years. See <a href="http://www.plastexmatting.com/uploads/4/4/0/0/44003899/warranty.pdf">www.plastexmatting.com/uploads/4/4/0/0/44003899/warranty.pdf</a>
WIND RESISTANCE	*When loose laid, Crossgrip PVC is effective for winds up to 60mph (96 km/h). In Laboratory conditions, on a flat stable platform at The University Of Hertfordshire, School of Aerospace, Automotive & Design Engineering, Crossgrip PVC remained stable in wind speeds up to 94mph (150 km/h).



Plastic Extruders Ltd, Russell Gardens, Wickford, SS11 8DN, UK  
Tel: +44(0)1268 571116

Web: [www.plastexmatting.com](http://www.plastexmatting.com)

# PRODUCT DATA SHEET: CROSSGRIP PVC

## ANCILLARIES



14mm x 60mm x 10.1m  
(9/16" x 2 1/2" x 33')

### 60mm PVC edging strip

Supplied in rolls of 10.1m (33') length with cold welding paste.

**Colours:** Black, Dark Grey, Dark Brown, Holly Green, Oxford Blue, Yellow



14mm x 100mm x 10.1m  
(9/16" x 3 3/4" x 33')

### 100mm PVC edging strip

Supplied in rolls of 10.1m (33') length with cold welding paste.

**Colours:** Black, Dark Grey, Yellow

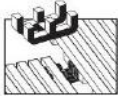


15mm x 45mm x 2m  
(5/8" x 1 13/16" x 6'6")

### 45mm Aluminium edging strip

Supplied in sections of 2m (6'6") length with fixing screws and plugs.

**Colours:** Anodised Aluminium, Powder Coated Yellow



### Connector clips - Dual purpose

For joining sections of matting together side to side or end to end. Supplied in packs of 10.



14mm x 2.5m  
(9/16" x 8'2")

### Snap Track

2 part snap track can be welded to join rolls end to end or side to side for large area covering. Supplied with cold welding paste.

**Colours:** Black, Dark Grey



### Connector clips - Side to end

For joining sections of matting together side to end.

Supplied in packs of 10.



### Small floor hook

For securing sections of matting to floor.

Supplied in packs of 10 with screws and plugs.