

CROSSGRIP TPO

Roof walkway matting in TPO material

A roof walkway matting compatible with TPO and EPDM roofs.

Crossgrip TPO gives continuous all weather protection to roof membranes from dropped tools, heavy foot traffic and maintenance equipment.

Designed for use on flat roofs, Crossgrip TPO's 1/2" (12mm) one piece welded open grid design offers permanent slip resistance, even in areas where water may pool.



BENEFITS

Certified slip resistance DIN 51130: R9

Excellent drainage DIN 51130: V10

Fire resistant

Roof membrane protection

Compatible with TPO and EPDM roof membranes

Quick to install

Contours to the roof structure

Loose lay, no fixing required

Long life

FEATURES

Embossed surface

Two layer construction

EN 13501-1 : 2007- Dfl-S1

Durable welded construction

TPO construction

Supplied in 33' (10m) rolls

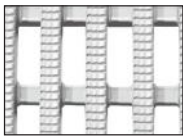
Made from flexible TPO

Stable in winds up to 55mph (89km/h)*

UV resistant

* Tests at the University of Hertfordshire, School of Aerospace, Automotive & Design Engineering showed Crossgrip TPO when laid flat on a stable platform remained in position for wind speeds of 88mph (142km/h).

STANDARD COLOR



WHITE

STANDARD SIZES

PRODUCT	HEIGHT	STANDARD ROLL OPTIONS**
Crossgrip TPO	1/2" (12mm)	2'6" x 33' (0.75 x 10m)

**Contact us for custom dimensions.



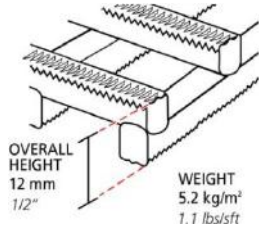
Plastex Mattinc Inc., 120 55th Street NE Fort Payne, AL 35967 U.S.A.
Sales Tel: 256.845.7725

Web: www.plastexmatting.com

PRODUCT DATA SHEET: Crossgrip TPO

SIZES & WEIGHTS

<i>All dimensions are nominal</i>	Height (in)	Length (ft)	Width (ft)	Weight (lbs/sq.ft)
<i>Tolerances</i>	<i>+/- 0.05"</i>	<i>0+1.0'</i>	<i>+/- 1/2"</i>	
Crossgrip TPO	1/2"	33'	2'6"	1.1



GENERAL

- APPEARANCES** Open grid “duckboard” design with cross directional top ribs.
- COLORS** Available in one homogenous standard color; White.
- DURABILITY** One piece welded construction for long life and minimal maintenance.
- INSTALLATION** Loose laid*.
- WORKABILITY** Flexible construction is easy to cut and shape on site. Supplied in rolls with top ribs facing upwards. Requires inverting once rolled out prior to use.
- USES** Specifically engineered for roof walkways.

TECHNICAL DATA

- ACOUSTIC** Excellent sound absorption properties.
- COMPOSITION** Thermoplastic polyolefin.
- ENVIRONMENT** Plastex does not use any substances currently included in the SVHC (Substances of Very High Concern) list under R.E.A.C.H.* in any matting products. Crossgrip TPO is 100% recyclable.
*Registration, Evaluation, Authorization and Restriction of Chemical substances

It has been determined under the guidelines for the State of California Safe Drinking Water and Toxic Enforcement Act of 1986 (Prop 65), that no warning labels or information provision are required for Crossgrip.
- FIRE** EN ISO 13501-1:2007-Dfl-S1
- SLIP RESISTANCE** ASTM F 1677 - Dry/Wet: 1.1/0.9
DIN 51130: R9, V10
- WARRANTY** 2 years. See www.plastexmatting.com/uploads/4/4/0/0/44003899/warranty.pdf
- WIND STABILITY** *When loose laid, Crossgrip TPO is effective for winds up to 55 mph (89 km/h). In Laboratory conditions, on a flat stable platform at The University Of Hertfordshire, School of Aerospace, Automotive & Design Engineering, Crossgrip TPO remained stable in wind speeds up to 88 mph (142 km/h).

