

FLEXI TRED

Heavy duty ribbed matting

Providing electrical resistance and enhanced safety for demanding applications.

A durable, chemical resistant sheet vinyl with a textured broad rib surface for enhanced safety. Flexi Tred insulates from the dangers of electric shock and meets DIN/EN 60243-1 with a breakdown voltage of 27kV.



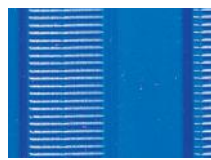
BENEFITS

- Good slip and wear resistance
- Insulates from electric shock
- Chemical, oil and acid resistant
- Easy to cut on site, contours to uneven surfaces
- Quick to install
- Fire resistant

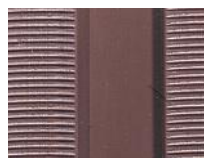
FEATURES

- Textured broad rib surface
- Breakdown voltage of 27kV
- Vinyl sheets in roll format
- Made from flexible PVC
- Supplied in convenient roll formats
- EN 13501 - I : 2007- Cl - SI

STANDARD COLORS



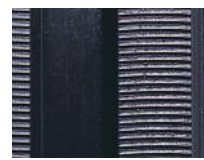
BLUE



BROWN



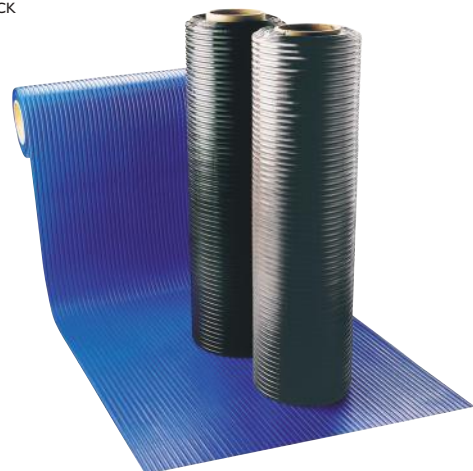
LIGHT GRAY



BLACK

STANDARD SIZES

| PRODUCT | HEIGHT | STANDARD ROLL OPTION |
|------------|----------------|-------------------------|
| Flexi Tred | 5/32" (4.0) | 3'3" x 33' (1 x 10m) |



PRODUCT DATA SHEET: FLEXI TRED

SIZES & WEIGHTS

| <i>All dimensions are nominal</i> | Height (in) | Length (ft) | Widths (ft) | Weight (lbs/sq.ft) |
|-----------------------------------|------------------|---------------|-----------------|--------------------|
| <i>Tolerances</i> | <i>+/- 0.05"</i> | <i>0+1.0'</i> | <i>+/- 1/2"</i> | |
| Flexi Tred | 5/32" | 33' | 3'3" | 0.86 |



Flexi Tred

GENERAL

- APPEARANCES** Heavy duty ribbed pattern on a continuous sheet format.
- COLORS** Blue, Brown, Light Gray, Black
- DURABILITY** Continuous extruded sheet with high scuff resistance.
- WORKABILITY** Available in rolls for ease of installation. Easy to cut to size and shape.
- USES** Indoor or outdoor use for floor protection and floor enhancement.

TECHNICAL DATA

- CHEMICAL** Resistant to most acids, alkalines and oils. For specific chemical resistances, www.plastexmatting.com/uploads/4/4/0/0/44003899/pvc-chemical-resistance.pdf
- COMPOSITION** Flexible DINP plasticized Polyvinyl Chloride (PVC).
- ELECTRICAL** BS 2782: Part 2 Method 230A
DIN 60243-1 (VDE 0303 part 21): 1999-03
Insulation resistance > 2000M Ω Electric strength = 20,000 volts
Breakdown voltage: 27.050 kV eff
- ENVIRONMENT** Black color is manufactured with our post-industrial recycled material. The recycled content averages at least 30%, but we strive for 100% where possible.
Plastex does not use any substances currently included in the SVHC (*Substances of Very High Concern*) list under R.E.A.C.H.* in any matting products. Flexi Tred is 100% recyclable.
* Registration, Evaluation, Authorisation and Restriction of Chemical substances
- FIRE** UL 94. Horizontal burning test. Classification 94HB.
- REVERSION** Thermoplastic shrinkage can result in size reductions up to 2%. Accelerated in hot environments. Refer to www.plastexmatting.com/uploads/4/4/0/0/44003899/vinyl-matting-dimensional-stability.pdf
- THERMAL** Functional -9°F +140°F (slight size variation may occur at temperature extremes).
- UV LIGHT** Resistance to PVC degradation.
- WARRANTY** 2 years. See www.plastexmatting.com/uploads/4/4/0/0/44003899/warranty.pdf

