

FRONTRUNNER BRUSH



Slip resistant entrance matting with brush inserts

For maximum moisture and dirt removal in external areas.

The brush strips with bristles will scour snow, mud and other heavy contaminants from the shoe, boot or wheel, keeping buildings dirt-free under the most extreme weather conditions.

Frontrunner Brush works as a 'stand alone' module or in combination with other Frontrunner Entrance Flooring Systems.



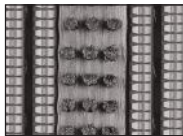
BENEFITS

- High soil removal and slip resistance
- Excellent drainage
- Excellent scraping
- Fire resistant
- Easy to maintain
- Seamless, quick and easy installations
- Easy to cut on site, contours to uneven surfaces

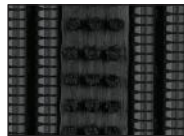
FEATURES

- Diamond cut pattern
- Two layer open grid construction
- Nylon brush inserts
- EN 13501 - 1 : 2007- Cf1 - S2
- Can be rolled up or lifted for cleaning
- Supplied in 33' (10m) rolls - modules also available
- Made from flexible PVC

STANDARD COLORS



DARK GRAY



BLACK



STANDARD SIZES

PRODUCT	HEIGHT	STANDARD ROLL OPTIONS*			STANDARD MODULE OPTIONS**		
Frontrunner Brush	9/16" - 3/4" (14-19mm)	2' x 33' (0.6 x 10m)	3' x 33' (0.91 x 10m)	4' x 16'6" (12 x 5m)	2' 7" x 3' 11" (0.8 x 1.2m)	3' 3" x 4' 11" (1 x 1.5m)	3' 7" x 6' 7" (1.1 x 2m)

*Contact us for custom dimensions.

**Surface modules are supplied with factory fitted PVC ramped edging to four sides.



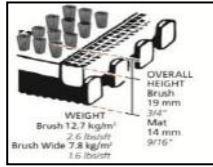
Plastex Mattinc Inc., 120 55th Street NE Fort Payne, AL 35967 U.S.A.
Sales Tel: 256.845.7725

Web: www.plastexmatting.com

PRODUCT DATA SHEET: Frontrunner Brush

SIZES & WEIGHTS

<i>All dimensions are nominal</i>	Height (in)	Length (ft)	Widths (ft)		Weight (lbs/sq.ft)
<i>Tolerances</i>	<i>+/- 0.05"</i>	<i>0+1.0'</i>	<i>+/- 1/2"</i>		
Frontrunner Brush	9/16" - 3/4"	33'	2'	3'	2.6
Frontrunner Brush	9/16" - 3/4"	16'6"		4'	2.6



GENERAL

- APPEARANCES** Open grid "heelproof" design with nylon brush inserts.
- COLORS** Black and Dark Gray homogenous stable colors.
- DURABILITY** All welded durable construction for long effective usage.
- INSTALLATION** **Recessed wells:**
www.plastexmatting.com/uploads/4/4/0/0/44003899/frontrunner-installation-guide-recessed-applications.pdf
Surface mounted applications:
www.plastexmatting.com/uploads/4/4/0/0/44003899/frontrunner-installation-guide-surface-mounted-applications.pdf
- WORKABILITY** Flexible construction is easy to cut and shape on site. Supplied in rolls with top ribs facing outwards. Requires inverting once rolled out prior to use.
- USES** Maximum dirt removal in high traffic internal/entrance external areas. For Retail, Hospitality, Offices, Restaurants, Leisure, Industrial, Education, High commercial applications, etc.

TECHNICAL DATA

- ACOUSTIC** Excellent sound absorption properties.
- CHEMICAL** Resistant to most acids, alkalines and oils (for specific chemical resistances, see www.plastexmatting.com/uploads/4/4/0/0/44003899/pvc-chemical-resistance.pdf)
- COMPOSITION** Flexible Polyvinyl Chloride (PVC)

Nylon Brush Inserts: see below

<i>Construction</i>	Aligned Tufting	<i>Bristle diameter</i>	0.012 in	<i>Insert thickness</i>	0.47 in
<i>Bristle content</i>	Nylon 6.6 Monofilaments	<i>Bristle height</i>	3/16 in	<i>Backing</i>	PVC

- ENVIRONMENT** It has been determined under the guidelines for the State of California Safe Drinking Water and Toxic Enforcement Act of 1986 (Prop 65), that no warning labels or information provision are required for Frontrunner Brush. Our Frontrunner Entrance matting System qualifies for LEED IEQ Credit 5. When produced in Black or Gray, our Frontrunner range may also qualify for LEED MR Credit 4. Our Black PVC matting is manufactured with our post-industrial recycled material. The recycled content averages at least 30%, but we strive for 100% where possible. Plastex does not use any substances currently included in the SVHC (Substances of Very High Concern) list under R.E.A.C.H.* in any matting products. * Registration, Evaluation, Authorization and Restriction of Chemical substances

- FIRE** **PVC grid:** EN ISO 13501-1:2007-Cfl-S2
Nylon Brush fibres: UL94 - V2

- REVERSION** Thermoplastic shrinkage can result in size reductions up to 2%. Accelerated in hot environments. Refer to www.plastexmatting.com/uploads/4/4/0/0/44003899/vinyl-matting-dimensional-stability.pdf

- THERMAL** Functional -9⁰F +140⁰F (slight size variation may occur at temperature extremes).



PRODUCT DATA SHEET: Frontrunner Brush

UV LIGHT

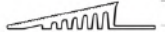
Resistant to PVC degradation.

WARRANTY

2 years. See

www.plastexmatting.com/uploads/4/4/0/0/44003899/warranty.pdf

ANCILLARIES



9/16" x 2 1/2" x 33'
(14mm x 60mm x 10.1m)

2 1/2" PVC edging strip

Supplied in rolls of 33' (10.1m) length
with cold welding paste.

Colors: Black, Dark Gray



5/8" x 1 13/16" x 6'6"
(15mm x 45mm x 2m)

1 13/16" Aluminum edging strip

Supplied in sections of 6'6" (2m) length
with fixing screws and plugs.

Color: Anodized Aluminum



9/16" x 3 3/4" x 33'
(14mm x 100mm x 10.1m)

3 3/4" PVC edging strip

Supplied in rolls of 33' (10.1m) length
with cold welding paste.

Colors: Black, Dark Gray



9/16" x 8'2"
(14mm x 2.5m)

Snap Track

2 part snap track can be welded to join
rolls end to end or side to side for large area
covering. Supplied with cold welding paste.

Colors: Black, Dark Gray



Plastex Matting Inc., 120 55th Street NE Fort Payne, AL 35967 U.S.A.
Sales Tel: 256.845.7725

Web: www.plastexmatting.com