

FRONTRUNNER ENTRY

Open grid, slip resistant and heel-proof matting

A uniquely effective matting to help prevent dirt from entering buildings in high traffic entryways.

The aggressive diamond tread pattern scrapes dirt off shoes, while the 9/16" (14mm) or 13/32" (10.5mm) open grid structure allows it to fall out of the way. This efficient, high quality, 'scrape and clean' system also protects internal floor coverings and significantly reduces cleaning costs.

The special close space design of the open grid bars also allows the product to be heel proof and suitable for wheel chairs, shopping trolleys and other small wheeled traffic. Frontrunner Entry can be used in combination with other products from the Frontrunner Entrance Flooring System range for a complete interior and exterior entrance matting solution.



BENEFITS

Certified slip resistance DIN 51130: R11 ASTM I677: 0.6/0.6

Excellent drainage DIN 51130: V10

Fire resistant

Easy to maintain

Seamless, quick and easy installations

Easy to cut on site, contours to uneven surfaces

Spike heel proof

Enhanced branding on styling

FEATURES

Diamond cut pattern

Two layer open grid construction

EN 13501 - I : 2007- Bfl - SI ASTM E648: Class I

Can be rolled up or lifted for cleaning

Supplied in 33' (10m) rolls - modules also available

Made from flexible PVC

Close mesh grid matting

5 standard grid colors

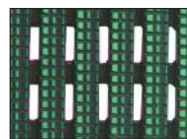
STANDARD COLORS



DARK GRAY



DARK BROWN



HOLLY GREEN



OXFORD BLUE



BLACK

Other colors available on request.

Frontrunner Entry Low Profile

A low profile 13/32" (10.5mm) option that aligns with standard ceramic floor tiles and carpets in recessed applications. This can prevent the need for creating a deeper matwell in an existing subfloor in order to accommodate the entrance matting system.

STANDARD SIZES

PRODUCT	HEIGHT	STANDARD ROLL OPTIONS			STANDARD MODULE OPTIONS*		
Frontrunner Entry	9/16" (14mm)	2' x 33' (0.6 x 10m)	3' x 33' (0.91 x 10m)	4' x 33' (1.2 x 10m)	2' 7" x 3' 11" (0.8 x 1.2m)	3' 3" x 4' 11" (1 x 1.5m)	3' 7" x 6' 7" (1.1 x 2m)
Low Profile	13/32" (10.5mm)	2' x 33' (0.6 x 10m)	3' x 33' (0.91 x 10m)	4' x 33' (1.2 x 10m)			

*Surface modules are supplied with factory fitted PVC ramped edging to four sides.



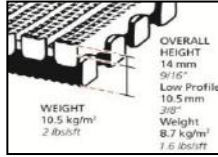
Plastex Mattinc Inc., 120 55th Street NE Fort Payne, AL 35967 U.S.A.
Sales Tel: 256.845.7725

Web: www.plastexmatting.com

PRODUCT DATA SHEET: Frontrunner Entry

SIZES & WEIGHTS

<i>All dimensions are nominal</i>	Height (in)	Length (ft)	Widths (ft)			Weight (lbs/sq.ft)
<i>Tolerances</i>	<i>+/- 0.05"</i>	<i>0+1.0'</i>	<i>+/- 1/2"</i>			
Frontrunner Entry	9/16"	33'	2'	3'	4'	2
Frontrunner Entry Low profile	13/32"	33'	2'	3'	4'	1.6



GENERAL

- APPEARANCES** Open grid "heelproof" design.
- COLORS** Black, Dark Gray, Brown, Lignite Brown, Holly Green and Oxford Blue homogenous stable colors. Other colors available on request.
- DURABILITY** All welded durable construction for long effective usage.
- INSTALLATION** **Recessed wells:**
www.plastexmatting.com/uploads/4/4/0/0/44003899/frontrunner-installation-guide-recessed-applications.pdf
Surface mounted applications:
www.plastexmatting.com/uploads/4/4/0/0/44003899/frontrunner-installation-guide-surface-mounted-applications.pdf
- WORKABILITY** Flexible construction is easy to cut and shape on site. Supplied in rolls with top ribs facing outwards. Requires inverting once rolled out prior to use.
- USES** For high traffic entrance internal areas in Retail, Hospitality, Offices, Restaurants, Leisure, Industrial, Education, High commercial applications, etc.

TECHNICAL DATA

- ACOUSTIC** Excellent sound absorption properties.
- CHEMICAL** Resistant to most acids, alkalines and oils (for specific chemical resistances, see www.plastexmatting.com/uploads/4/4/0/0/44003899/pvc-chemical-resistance.pdf)
- COMPOSITION** Flexible Polyvinyl Chloride (PVC)
- ENVIRONMENT** It has been determined under the guidelines for the State of California Safe Drinking Water and Toxic Enforcement Act of 1986 (Prop 65), that no warning labels or information provision are required for Frontrunner Entry.
- Our Frontrunner Entrance matting System qualifies for LEED IEQ Credit 5.
When produced in Black or Gray, our Frontrunner range may also qualify for LEED MR Credit 4.
- Our Black PVC matting is manufactured with our post-industrial recycled material. The recycled content averages at least 30%, but we strive for 100% where possible.
- Plastex does not use any substances currently included in the SVHC (Substances of Very High Concern) list under R.E.A.C.H.* in any matting products. Frontrunner Entry is 100% recyclable.
* Registration, Evaluation, Authorization and Restriction of CHEmical substances
- FIRE** Flame retardant grade - EN ISO 13501 - I : 2007- Bfl - S1 ASTM E648 - Average Critical Radiant Flux - Class I
- REVERSION** Thermoplastic shrinkage can result in size reductions up to 2%. Accelerated in hot environments. Refer to www.plastexmatting.com/uploads/4/4/0/0/44003899/vinyl-matting-dimensional-stability.pdf
- SLIP RESISTANCE** ASTM F 1677 - Dry/Wet: 0.6/0.6
DIN 51130: R11, V10
- THERMAL** Functional -9°F +140°F (slight size variation may occur at temperature extremes).
- UV LIGHT** Resistant to PVC degradation.
- WARRANTY** **Frontrunner Entry:** 4 years. See www.plastexmatting.com/uploads/4/4/0/0/44003899/warranty.pdf
Frontrunner Entry Low Profile: 2 years



PRODUCT DATA SHEET: Frontrunner Entry

FRONTRUNNER ENTRY ANCILLARIES



9/16" x 2 1/2" x 33'
(14mm x 60mm x 10.1m)

2 1/2" PVC edging strip

Supplied in rolls of 33' (10.1m) length with cold welding paste.

Colors: Black and Dark Gray



9/16" x 3 3/4" x 33'
(14mm x 100mm x 10.1m)

3 3/4" PVC edging strip

Supplied in rolls of 33' (10.1m) length with cold welding paste.

Colors: Black, Dark Gray



5/8" x 1 13/16" x 6'6"
(15mm x 45mm x 2m)

1 13/16" Aluminum edging strip

Supplied in sections of 6'6" (2m) length with fixing screws and plugs.

Color: Anodized Aluminum



9/16" x 8'2"
(14mm x 2.5m)

Snap Track

2 part snap track can be welded to join rolls end to end or side to side for large area covering. Supplied with cold welding paste.

Colors: Black, Dark Gray



Connector clips - Side to side

For joining sections of matting together side to side.

Supplied in packs of 10.

FRONTRUNNER ENTRY LOW PROFILE ANCILLARIES



3/8" x 2" x 33'
(10mm x 50mm x 10.1m)

2" PVC edging strip

Supplied in rolls of 33' (10.1m) length with cold welding paste.

Colors: Black, Dark Gray



13/32" x 8'2"
(10.5mm x 2.5m)

Snap Track Low Profile

2 part snap track can be welded to join rolls end to end or side to side for large area covering. Supplied with welding paste.

Colors: Black, Dark Gray

