

FRONTRUNNER ENTRY

Open grid, slip resistant and heel-proof matting

A uniquely effective matting to help prevent dirt from entering buildings in high traffic internal areas.

The aggressive diamond tread pattern scrapes dirt off shoes, whilst the 14mm (9/16") open grid structure allows it to fall out of the way. This efficient, high quality, 'scrape and clean' system also protects internal floor coverings and significantly reduces cleaning costs.

The special close space design of the open grid bars also allows the product to be heel proof and suitable for wheel chairs, shopping trolleys and other small wheeled traffic. Frontrunner Entry can be used in combination with other products from the Frontrunner Entrance Flooring System range for a complete interior and exterior entrance matting solution.



BENEFITS

- Certified slip resistance DIN 51130: R11 ASTM 1677: 0.6/0.6
- Excellent drainage DIN 51130: V10
- Fire resistant
- Easy to maintain
- Seamless, quick and easy installations
- Easy to cut on site, contours to uneven surfaces
- Heel and wheel-proof
- Enhanced branding on styling

FEATURES

- Diamond cut pattern
- Two layer open grid construction
- EN 13501 - 1 : 2007- Bfl - S1 ASTM E648: Class I
- Can be rolled up or lifted for cleaning
- Supplied in 10m (33') rolls - modules also available
- Made from flexible PVC
- Close mesh grid matting
- 5 standard grid colours

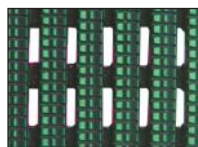
STANDARD COLOURS



DARK GREY



DARK BROWN



HOLLY GREEN



OXFORD BLUE



BLACK

Other colours available on request.

Frontrunner Entry Low Profile

A low profile 10.5mm (13/32") option that aligns with standard ceramic floor tiles and carpets in recessed applications. This can prevent the need for creating a deeper matwell in an existing subfloor in order to accommodate the entrance matting system.

STANDARD SIZES

| PRODUCT | HEIGHT | STANDARD ROLL OPTIONS | | | STANDARD MODULE OPTIONS* | | |
|------------------|--------------------|-------------------------|--------------------------|---------------------------|--------------------------------|------------------------------|-----------------------------|
| Frontunner Entry | 14mm (9/16") | 10 x 0.6m (33' x 2') | 10 x 0.91m (33' x 3') | 5 x 1.2m (16' 6" x 4') | 0.8 x 1.2m (2' 7" x 3' 11") | 1 x 1.5m (3' 3" x 4' 11") | 1.1 x 2m (3' 7" x 6' 7") |
| Low Profile | 10.5mm (13/32") | 10 x 0.6m (33' x 2') | 10 x 0.91m (33' x 3') | 5 x 1.2m (16' 6" x 4') | | | |

*Surface modules are supplied with factory fitted PVC ramped edging to four sides.



Plastic Extruders Ltd, Russell Gardens, Wickford, SS11 8DN, UK
Tel: +44(0)1268 571116

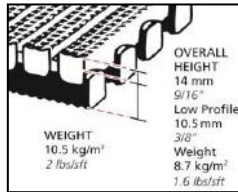
Web: www.plastexmatting.com

PRODUCT DATA SHEET: FRONTRUNNER ENTRY

Aug-18

SIZES & WEIGHTS

| | <i>All dimensions are nominal</i> | | | | | |
|-------------------------------|-----------------------------------|----------------|--------------|------------|-----------------------------|------|
| | Height (mm) | Length (m) | Widths (cm) | | Weight (kg/m ²) | |
| | <i>Tolerances (mm)</i> | <i>+/- 0.5</i> | <i>0+0.3</i> | <i>0+2</i> | | |
| Frontrunner Entry | 14 | 10 | 60 | 91 | | 10.5 |
| Frontrunner Entry | 14 | 5 | | | 120 | 10.5 |
| Frontrunner Entry Low Profile | 10.5 | 10 | 60 | 91 | | 8.7 |
| Frontrunner Entry Low Profile | 10.5 | 5 | 60 | 91 | 120 | 8.7 |



GENERAL

APPEARANCES

Open grid "heelproof" design.

COLOURS

Black, Dark Grey, Dark Brown, Holly Green and Oxford Blue homogenous stable colours.
Other colours available on request.

DURABILITY

One piece welded construction for maintenance free life.

INSTALLATION

Recessed wells:

www.plastexmatting.com/uploads/4/4/0/0/44003899/frontrunner-installation-guide-recessed-applications.pdf

Surface mounted applications:

www.plastexmatting.com/uploads/4/4/0/0/44003899/frontrunner-installation-guide-surface-mounted-applications.pdf

WORKABILITY

Flexible construction is easy to trim and shape on site.
Supplied in rolls with top ribs facing outwards. Requires inverting once rolled out prior to use.

USES

For high traffic entrance internal areas in Retail, Hospitality, Offices, Restaurants, Leisure, Industrial, Education, High commercial applications, etc.

TECHNICAL DATA

ACOUSTIC

Excellent sound absorption properties.

CHEMICAL

Resistant to most acids, alkalines and oils. For specific chemical resistances, see www.plastexmatting.com/uploads/4/4/0/0/44003899/pvc-chemical-resistance.pdf

COMPOSITION

Flexible DINP plasticised Polyvinyl Chloride (PVC).

ENVIRONMENT

Our Black PVC matting is manufactured with our post-industrial recycled material. The recycled content averages at least 30%, but we strive for 100% where possible.

Plastex does not use any substances currently included in the SVHC (Substances of Very High Concern) list under R.E.A.C.H.* in any matting products. Frontrunner Entry is 100% recyclable.

* Registration, Evaluation, Authorisation and Restriction of Chemical substances

FIRE

Flame retardant grade - EN ISO 13501 - I : 2007- Bfl - S1 ASTM E648 - Average Critical Radiant Flux - Class I

REVERSION

Thermoplastic shrinkage can result in size reductions up to 2%. Accelerated in hot environments. Refer to www.plastexmatting.com/uploads/4/4/0/0/44003899/vinyl-matting-dimensional-stability.pdf

SLIP RESISTANCE

ASTM F 1677 - Dry/Wet: 0.6/0.6
DIN 51130: R11, V10

THERMAL

Functional -23°C +60°C (slight size variation may occur at temperature extremes).

UV LIGHT

Resistance to PVC degradation.

WARRANTY

4 years. See www.plastexmatting.com/uploads/4/4/0/0/44003899/warranty.pdf



Plastic Extruders Ltd, Russell Gardens, Wickford, SS11 8DN, UK
Tel: +44(0)1268 571116

Web: www.plastexmatting.com

PRODUCT DATA SHEET: FRONTRUNNER ENTRY

FORNTRUNNER ENTRY ANCILLARIES



14mm x 60mm x 10.1m
(9/16" x 2 1/2" x 33')

60mm PVC edging strip

Supplied in rolls of 10.1m (33') length with cold welding paste.

Colours: Black, Dark Grey, Dark Brown, Holly Green, Oxford Blue, Yellow



14mm x 100mm x 10.1m
(9/16" x 3 3/4" x 33')

100mm PVC edging strip

Supplied in rolls of 10.1m (33') length with cold welding paste.

Colours: Black, Dark Grey, Yellow



15mm x 45mm x 2m
(5/8" x 1 13/16" x 6'6")

45mm Aluminium edging strip

Supplied in sections of 2m (6'6") length with fixing screws and plugs.

Colours: Anodised Aluminium, Powder Coated Yellow

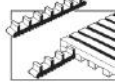


14mm x 2.5m
(9/16" x 8'2")

Snap Track

2 part snap track can be welded to join rolls end to end or side to side for large area covering. Supplied with cold welding paste.

Colours: Black, Dark Grey



Connector clips - Side to side

For joining sections of matting together side to side.

Supplied in packs of 10.

FRONTRUNNER ENTRY LOW PROFILE ANCILLARIES



10mm x 50mm x 10.1m
(3/8" x 2" x 33')

50 PVC edging strip

Supplied in rolls of 10.1m (33') length with cold welding paste.

Colours: Black, Dark Grey



10.5mm x 2.5m
(13/32" x 8'2")

Snap Track Low Profile

2 part snap track can be welded to join rolls end to end or side to side for large area covering. Supplied with cold welding paste.

Colours: Black, Dark Grey