

FRONTRUNNER SB+

Vinyl ribbed, solid backed entrance matting with carpet inserts

Without the need of a recessed matwell, Frontrunner SB+ cleans, scrapes and dries dirt and moisture at the entrance.

In addition to Frontrunner SB's ribbed pattern that scrapes dirt off shoes and solid back for containment of dirt, Frontrunner SB+ has added absorbent inserts with monofilament scrapers that remove moisture at the entrance.

Featuring a grid of 1/4" thickness, Frontrunner SB+ can either be laid directly on top of sub-floor or be used on top of current flooring with ramped edging.



BENEFITS

Certified slip resistance DIN 51130: R11 ASTM 1677: 0.6/0.6

Maximum moisture removal

Fire resistant

Surface mounted

Can be adhered to sub-floor in high traffic areas

Easy to cut on site, contours to uneven surfaces

Seamless, quick and easy installations

Lightweight

Heel and wheel-proof

Rolling resistance

FEATURES

Etched pattern

Absorbent inserts with monofilament scrapers

EN 13501 - 1 : 2007- Cfl - S1 ASTM E648: Class 2

1/4" grid height

Solid backing

Made from flexible PVC

Supplied in 33' (10m)

One layer hollow construction

Close mesh grid matting

ASTM F2753: 0.080in lost of thickness after 1,000 cycles at 500lbs

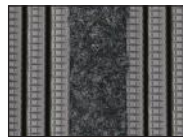
STANDARD COLORS



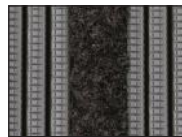
BLACK WITH 607 INSERT



BLACK WITH 608 INSERT



GRAY WITH 606 INSERT



GRAY WITH 607 INSERT



STANDARD SIZES

PRODUCT	HEIGHT	STANDARD ROLL OPTION	STANDARD MODULE OPTION*
Frontrunner SB+	1/4" - 5/16" (6.5/8mm)	3'3" x 33' (1 x 10m)	3'3" x 4'11" (1 x 1.5m)

*Surface modules are supplied with factory fitted PVC ramped edging to four sides.



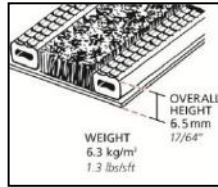
Plastex Mattinc Inc., 120 55th Street NE Fort Payne, AL 35967 U.S.A.
Sales Tel: 256.845.7725

Web: www.plastexmatting.com

PRODUCT DATA SHEET: Frontrunner SB+

SIZES & WEIGHTS

<i>All dimensions are nominal</i>	Height (in)	Length (ft)	Width (ft)	Weight (lbs/sq.ft)
<i>Tolerances</i>	+/- 0.05"	0+1.0'	+/- 1/2"	
Frontrunner SB+	1/4"-5/16"	33'	3'3"	1.3



GENERAL

APPEARANCES

Open ribbed "heelproof" design with Zeno Excellence absorbent inserts on vinyl sheet.

COLORS

Black and Dark Gray homogenous stable colors. Other colors available on request.

Absorbent inserts: 3 color choices - 606, 607 and 608. See www.plastexmatting.com/frontrunner-sb1.html

DURABILITY

All welded durable construction for long effective usage.

INSTALLATION

Loose laid or adhered to sub-floor:

www.plastexmatting.com/uploads/4/4/0/0/44003899/frontrunner-sb-sb-plus-installation-instructions.pdf

WORKABILITY

Flexible construction is easy to cut and shape on site.

Supplied in rolls with top ribs facing outwards. Requires inverting once rolled out prior to use.

USES

Moisture removal in medium to high traffic internal areas, such as Retail, Hospitality, Offices, Restaurants, Leisure, Industrial, Education, High commercial applications, etc.

TECHNICAL DATA

ACOUSTIC

Excellent sound absorption properties.

CHEMICAL

Resistant to most acids, alkalines and oils (for specific chemical resistances, see

www.plastexmatting.com/uploads/4/4/0/0/44003899/pvc-chemical-resistance.pdf

COMPOSITION

Flexible Polyvinyl Chloride (PVC)

Absorbent Inserts: see below

<i>Zeno Protect Excellence</i>	606, 607, 608
<i>Construction</i>	Tufted, Cut Pile
<i>Pile content</i>	100% nylon
<i>Pile weight</i>	0.22 lb/ft ² ± 5%
<i>Pile height</i>	± 1/4 in
<i>Total insert weight*</i>	0.9 lb/ft ² ± 5%

*Insert carpet & backing

<i>Zeno Protect Excellence</i>	606, 607, 608
<i>Total insert height*</i>	± 3/8 in
<i>Primary Backing</i>	Non-Woven Polyester
<i>Secondary Backing</i>	Vinyl compound
<i>Flammability</i>	EN 13501-1 - Cf-S1

*Insert carpet & backing

ENVIRONMENT

It has been determined under the guidelines for the State of California Safe Drinking Water and Toxic Enforcement Act of 1986 (Prop 65), that no warning labels or information provision are required for Frontrunner SB+.

When produced in Black or Gray, our Frontrunner range may also qualify for LEED MR Credit 4.

Our Frontrunner Entrance matting System qualifies for LEED IEQ Credit 5.

Our Black PVC matting is manufactured with our post-industrial recycled material. The recycled content averages at least 30%, but we strive for 100% where possible.

Plastex does not use any substances currently included in the SVHC (Substances of Very High Concern) list under R.E.A.C.H.* in any matting products.

* Registration, Evaluation, Authorization and Restriction of Chemical substances

Plastex Matting Inc., 120 55th Street NE Fort Payne, AL 35967 U.S.A.

Sales Tel: 256.845.7725

Web: www.plastexmatting.com



PRODUCT DATA SHEET: Frontrunner SB+

FIRE	EN ISO 13501-1:2007-Cfl-S1 Absorbent Inserts: see above	ASTM E648 - Class 2
REVERSION	Thermoplastic shrinkage can result in size reductions up to 2%. Accelerated in hot environments. Refer to www.plastexmatting.com/uploads/4/4/0/0/44003899/vinyl-matting-dimensional-stability.pdf	
ROLLING RESISTANCE	ASTM F 2753:	0.080in lost of thickness after 1,000 cycles at 500lbs
SLIP RESISTANCE	DIN 51130: R11, V10	
THERMAL	Functional -9°F +140°F (slight size variation may occur at temperature extremes).	
UV LIGHT	Resistant to PVC degradation.	
WARRANTY	3 years. See	www.plastexmatting.com/uploads/4/4/0/0/44003899/warranty.pdf

ANCILLARIES



1/4" x 1" x 197'
(6.5mm x 30mm x 60m)

1" PVC edging strip
Supplied in rolls of 60m (197') length
with cold welding paste.
Colors: Black, Dark Gray



1/8" x 1 1/9"
(3.5mm x 3.6m)

T joining I part strip
I part strip can be welded to join rolls end to end or side to side for large area covering.
Color: Black

