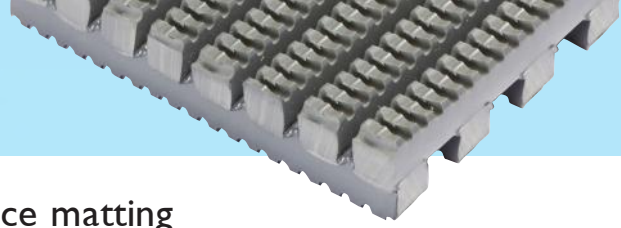


# FRONTRUNNER XT



## Extra slip resistant and heel-proof entrance matting

An entrance matting with a deeper etched tread for interior and exterior high traffic applications.

With all the features of Frontrunner Entry, Frontrunner XT has an extra aggressive, deep etched tread to give additional underfoot traction in outdoor applications and to remove the heaviest amounts of undershoe dirt and debris.

Frontrunner XT has therefore been successfully used where walkways and entrances are prone to becoming slippery and hazardous in wet conditions, and in particular on hardwood decking, bridges and general outdoor pedestrian areas.



### BENEFITS

- Certified slip resistance DIN 51130: R12
- Excellent drainage DIN 51130: V10
- Fire resistant
- Easy to maintain
- Seamless, quick and easy installations
- Easy to cut on site, contours to uneven surfaces
- Spike heel proof
- Enhanced branding or styling

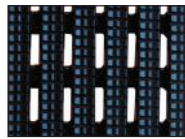
### FEATURES

- Diamond cut pattern
- Two layer open grid construction
- EN 13501 - 1 : 2007- Bfl - S1
- Can be rolled up or lifted for cleaning
- Supplied in 33' (10m) rolls - modules also available
- Made from flexible PVC
- Close mesh grid matting
- 3 standard grid colors

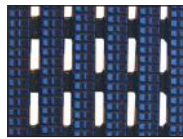
### STANDARD COLORS



DARK GRAY



BLACK



OXFORD BLUE

### STANDARD SIZES

PRODUCT	HEIGHT	STANDARD ROLL OPTIONS*		
Frontrunner XT	9/16" (14mm)	2' x 33' (0.6 x 10m)	3' x 33' (0.91 x 10m)	4' x 33' (1.2 x 10m)

\*To ensure maximum flexibility and convenience, Frontrunner entrance matting system can be delivered in rolls or cut to size.



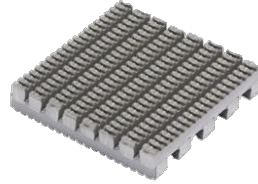
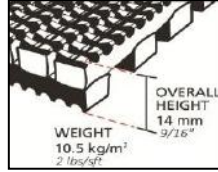
**Plastex Mattinc Inc.**, 120 55th Street NE Fort Payne, AL 35967 U.S.A.  
Sales Tel: 256.845.7725

Web: [www.plastexamting.com](http://www.plastexamting.com)

# PRODUCT DATA SHEET: Frontrunner XT

## SIZES & WEIGHTS

<i>All dimensions are nominal</i>	Height (in)	Length (ft)	Widths (ft)			Weight (lbs/sq.ft)
<i>Tolerances</i>	<i>+/- 0.05"</i>	<i>0+1.0'</i>	<i>+/- 1/2"</i>			
<i>Frontrunner XT</i>	9/16"	33'	2'	3'	4'	2
<i>Frontrunner XT Low Profile</i>	13/32"	33'	2'	3'	4'	1.8



## GENERAL

- APPEARANCES** Open grid "heelproof" design.
- COLORS** Black and Dark Gray homogenous stable colors. Other colors available on request.
- DURABILITY** All welded durable construction for long effective usage.
- INSTALLATION**
  - Recessed wells:** [www.plastexmatting.com/uploads/4/4/0/0/44003899/frontrunner-installation-guide-recessed-applications.pdf](http://www.plastexmatting.com/uploads/4/4/0/0/44003899/frontrunner-installation-guide-recessed-applications.pdf)
  - Surface mounted applications:** [www.plastexmatting.com/uploads/4/4/0/0/44003899/frontrunner-installation-guide-surface-mounted-applications.pdf](http://www.plastexmatting.com/uploads/4/4/0/0/44003899/frontrunner-installation-guide-surface-mounted-applications.pdf)
- WORKABILITY** Flexible construction is easy to cut and shape on site. Supplied in rolls with top ribs facing outwards. Requires inverting once rolled out prior to use.
- USES** For high traffic internal or external areas in Retail, Hospitality, Offices, Restaurants, Leisure, Industrial, Education, High commercial applications, etc.

## TECHNICAL DATA

- ACOUSTIC** Excellent sound absorption properties.
- CHEMICAL** Resistant to most acids, alkalines and oils (for specific chemical resistances, see [www.plastexmatting.com/uploads/4/4/0/0/44003899/pvc-chemical-resistance.pdf](http://www.plastexmatting.com/uploads/4/4/0/0/44003899/pvc-chemical-resistance.pdf))
- COMPOSITION** Flexible Polyvinyl Chloride (PVC)
- ENVIRONMENT**
  - It has been determined under the guidelines for the State of California Safe Drinking Water and Toxic Enforcement Act of 1986 (Prop 65), that no warning labels or information provision are required for Frontrunner XT.
  - Our Frontrunner Entrance matting System qualifies for LEED IEQ Credit 5.
  - When produced in Black or Gray, our Frontrunner range may also qualify for LEED MR Credit 4.
  - Our Black PVC matting is manufactured with our post-industrial recycled material. The recycled content averages at least 30%, but we strive for 100% where possible.
  - Plastex does not use any substances currently included in the SVHC (Substances of Very High Concern) list under R.E.A.C.H.\* in any matting products. Frontrunner XT is 100% recyclable.
  - \* Registration, Evaluation, Authorization and Restriction of Chemical substances
- FIRE** Flame retardant grade - EN ISO 13501 - I : 2007- Bfl - S1      ASTM E648 - Average Critical Radiant Flux - Class I
- REVERSION** Thermoplastic shrinkage can result in size reductions up to 2%. Accelerated in hot environments. Refer to [www.plastexmatting.com/uploads/4/4/0/0/44003899/vinyl-matting-dimensional-stability.pdf](http://www.plastexmatting.com/uploads/4/4/0/0/44003899/vinyl-matting-dimensional-stability.pdf)
- SLIP RESISTANCE** Frontrunner XT: DIN 51130: R12, V10      Frontrunner XT Low Profile: DIN 51130: R11, V10
- THERMAL** Functional -9°F +140°F (slight size variation may occur at temperature extremes).
- UV LIGHT** Resistant to PVC degradation.

- WARRANTY**
  - Frontrunner XT:** 4 years. See [www.plastexmatting.com/uploads/4/4/0/0/44003899/warranty.pdf](http://www.plastexmatting.com/uploads/4/4/0/0/44003899/warranty.pdf)
  - Frontrunner XT Low Profile:** 2 years



# PRODUCT DATA SHEET: Frontrunner XT

## FRONTRUNNER XT ANCILLARIES



9/16" x 2 1/2" x 33'  
(14mm x 60mm x 10.1m)

### 2 1/2" PVC edging strip

Supplied in rolls of 33' (10.1m) length with cold welding paste.

**Colors:** Black, Dark Gray



9/16" x 8'2"  
(14mm x 2.5m)

### Snap Track

2 part snap track can be welded to join rolls end to end or side to side for large area covering. Supplied with cold welding paste.

**Colors:** Black, Dark Gray



5/8" x 1 13/16" x 6'6"  
(15mm x 45mm x 2m)

### 1 13/16" Aluminum edging strip

Supplied in sections of 6'6" (2m) length with fixing screws and plugs.

**Color:** Anodized Aluminum



### Connector clips - Side to side

For joining sections of matting together side to side.

Supplied in packs of 10.

## FRONTRUNNER XT LOW PROFILE ANCILLARIES



3/8" x 2" x 33'  
(10mm x 50mm x 10.1m)

### 2" PVC edging strip

Supplied in rolls of 33' (10.1m) length with cold welding paste.

**Colors:** Black, Dark Gray



13/32" x 8'2"  
(10.5mm x 2.5m)

### Snap Track Low Profile

2 part snap track can be welded to join rolls end to end or side to side for large area covering. Supplied with welding paste.

**Colors:** Black, Dark Gray



Plastex Matting Inc., 120 55th Street NE Fort Payne, AL 35967 U.S.A.

Sales Tel: 256.845.7725

Web: [www.plastexmatting.com](http://www.plastexmatting.com)