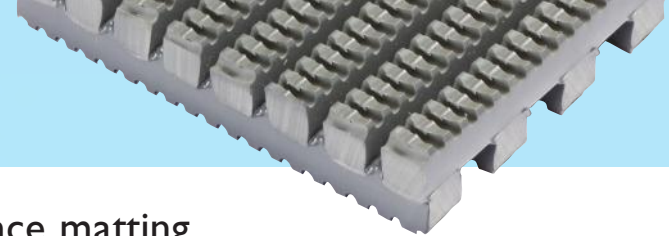


FRONTRUNNER XT



Extra slip resistant and heel-proof entrance matting

An entrance matting with a deeper etched tread for interior and exterior high traffic applications.

With all the features of Frontrunner Entry, Frontrunner XT has an extra aggressive, deep etched tread to give additional underfoot traction in outdoor applications and to remove the heaviest amounts of undershoe dirt and debris.

Frontrunner XT has therefore been successfully used where walkways and entrances are prone to becoming slippery and hazardous in wet conditions, and in particular on hardwood decking, bridges and general outdoor pedestrian areas.



BENEFITS

Certified slip resistance DIN 51130: R12

Excellent drainage DIN 51130: V10

Fire resistant

Easy to maintain

Seamless, quick and easy installations

Easy to cut on site, contours to uneven surfaces

Heel and wheel-proof

Enhanced branding or styling

FEATURES

Diamond cut pattern

Two layer open grid construction

EN 13501 - 1 : 2007- Bfl - S1

Can be rolled up or lifted for cleaning

Supplied in 10m (33') rolls - modules also available

Made from flexible PVC

Close mesh grid matting

3 standard grid colours

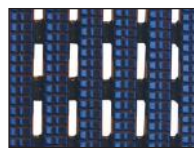
STANDARD COLOURS



DARK GREY



BLACK



OXFORD BLUE

STANDARD SIZES

| PRODUCT | HEIGHT | STANDARD ROLL OPTIONS* | | |
|----------------|-----------------|-------------------------|--------------------------|--------------------------|
| Frontrunner XT | 14mm (9/16") | 10 x 0.6m (33' x 2') | 10 x 0.91m (33' x 3') | 5 x 1.2m (16'6" x 4') |

*To ensure maximum flexibility and convenience, Frontrunner entrance matting system can be delivered in rolls or cut to size.



Plastic Extruders Ltd, Russell Gardens, Wickford, SS11 8DN, UK
Tel: +44(0)1268 571116

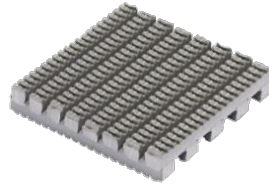
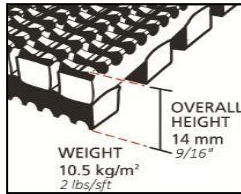
Web: www.plastexmatting.com

PRODUCT DATA SHEET: FRONTRUNNER XT

Aug-18

SIZES & WEIGHTS

| | <i>All dimensions are nominal</i> | | | | |
|---------------------------|-----------------------------------|----------------|--------------|------------|-----------------------------|
| | Height (mm) | Length (m) | Widths (cm) | | Weight (kg/m ²) |
| | <i>Tolerances (mm)</i> | <i>+/- 0.5</i> | <i>0+0.3</i> | <i>0+2</i> | |
| Fronrunner XT | 14 | 10 | 60 | 91 | 10.5 |
| Fronrunner XT | 14 | 5 | | 120 | 10.5 |
| Fronrunner XT Low profile | 10.5 | 10 | 60 | 91 | 8.7 |
| Fronrunner XT Low profile | 10.5 | 5 | | 120 | 8.7 |



GENERAL

APPEARANCES

Open grid "heelproof" design.

COLOURS

Black and Dark Grey homogenous stable colours. Other colours available on request.

DURABILITY

One piece welded construction for maintenance free life.

INSTALLATION

Recessed wells:

www.plastexmatting.com/uploads/4/4/0/0/44003899/fronrunner-installation-guide-recessed-applications.pdf

Surface mounted applications:

www.plastexmatting.com/uploads/4/4/0/0/44003899/fronrunner-installation-guide-surface-mounted-applications.pdf

WORKABILITY

Flexible construction is easy to trim and shape on site.

Supplied in rolls with top ribs facing outwards. Requires inverting once rolled out prior to use.

USES

For high traffic internal or external areas in Retail, Hospitality, Offices, Restaurants, Leisure, Industrial, Education, High commercial applications, etc.

TECHNICAL DATA

ACOUSTIC

Excellent sound absorption properties.

CHEMICAL

Resistant to most acids, alkalines and oils. For specific chemical resistances, see

www.plastexmatting.com/uploads/4/4/0/0/44003899/pvc-chemical-resistance.pdf

COMPOSITION

Flexible DINP plasticised Polyvinyl Chloride (PVC).

ENVIRONMENT

Our Black PVC matting is manufactured with our post-industrial recycled material. The recycled content averages at least 30%, but we strive for 100% where possible.

Plastex does not use any substances currently included in the SVHC (Substances of Very High Concern) list under R.E.A.C.H.* in any matting products. Fronrunner XT is 100% recyclable.

* Registration, Evaluation, Authorisation and Restriction of Chemical substances

FIRE

Flame retardant grade - EN ISO 13501-1:2007-Bfl-S1

ASTM E648 - Class I

REVERSION

Thermoplastic shrinkage can result in size reductions up to 2%. Accelerated in hot environments. Refer to

www.plastexmatting.com/uploads/4/4/0/0/44003899/vinyl-matting-dimensional-stability.pdf

SLIP RESISTANCE

Fronrunner XT: DIN 51130: R12, V10

Fronrunner XT Low Profile: DIN 51130: R11, V10

THERMAL

Functional -23°C +60°C (slight size variation may occur at temperature extremes).

UV LIGHT

Resistance to PVC degradation.

WARRANTY

4 Years. See

www.plastexmatting.com/uploads/4/4/0/0/44003899/warranty.pdf



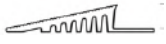
Plastic Extruders Ltd, Russell Gardens, Wickford, SS11 8DN, UK

Tel: +44(0)1268 571116

Web: www.plastexmatting.com

PRODUCT DATA SHEET: FRONTRUNNER XT

FRONTRUNNER XT ANCILLARIES



14mm x 60mm x 10.1m
(9/16" x 2 1/2" x 33')

60mm PVC edging strip

Supplied in rolls of 10.1m (33') length with cold welding paste.

Colours: Black, Dark Grey, Dark Brown, Holly Green, Oxford Blue, Yellow



15mm x 45mm x 2m
(5/8" x 1 13/16" x 6'6")

45mm Aluminium edging strip

Supplied in sections of 2m (6'6") length with fixing screws and plugs.

Colours: Anodised Aluminium, Powder Coated Yellow

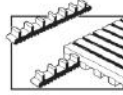


14mm x 2.5m
(9/16" x 8'2")

Snap Track

2 part snap track can be welded to join rolls end to end or side to side for large area covering. Supplied with cold welding paste.

Colours: Black, Dark Grey



Connector clips - Side to side

For joining sections of matting together side to side.

Supplied in packs of 10.

FRONTRUNNER ENTRY LOW PROFILE ANCILLARIES



10mm x 50mm x 10.1m
(3/8" x 2" x 33')

50 PVC edging strip

Supplied in rolls of 10.1m (33') length with cold welding paste.

Colours: Black, Dark Grey



10.5mm x 2.5m
(13/32" x 8'2")

Snap Track Low Profile

2 part snap track can be welded to join rolls end to end or side to side for large area covering. Supplied with cold welding paste.

Colours: Black, Dark Grey