

HERONTILE



Barefoot wet area tiling

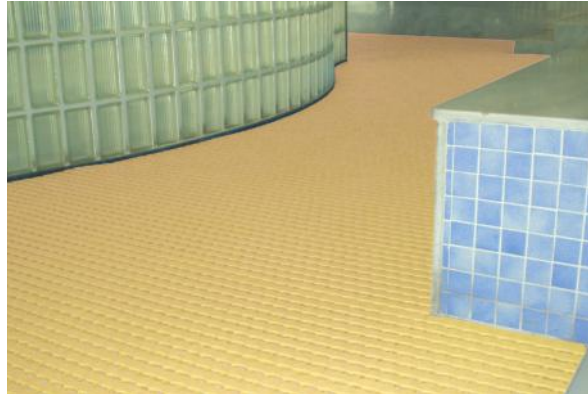
For coverage of large floor areas seamlessly and easily.

Herontile provides a hygienic, safe and attractive surface with permanent anti-fungal and antibacterial additives.

Herontile is made from an Ethylene Vinyl Acetate (EVA)* composition to guarantee softness and comfort. It also has a circular surface embossing for enhanced slip resistance and stands 15mm (5/8") high on strong support legs so that water disperses well underneath.

*Note: EVA is only suitable for indoor applications.

Available in four bright, stable and appealing colour options which are complementary to interior schemes.



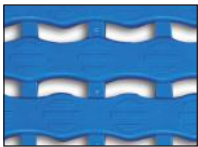
BENEFITS

- Certified slip resistance DIN 51097: C
- Excellent drainage
- Hygienic
- Barefoot comfort
- Easy and quick coverage of large floor areas
- Finished areas
- Can be rolled up for easy underneath cleaning & maintenance
- Enhanced branding or styling

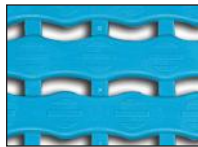
FEATURES

- Embossed surface
- 15mm (5/8") height
- Anti-microbial and anti-fungal additives
- Soft Ethylene Vinyl Acetate (EVA) composition
- Simple, click together joining mechanism
- PVC ramped edging
- Flexible construction
- 4 standard colors

STANDARD COLOURS



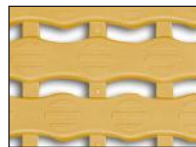
OCEAN BLUE



LIGHT BLUE



LIGHT GREY

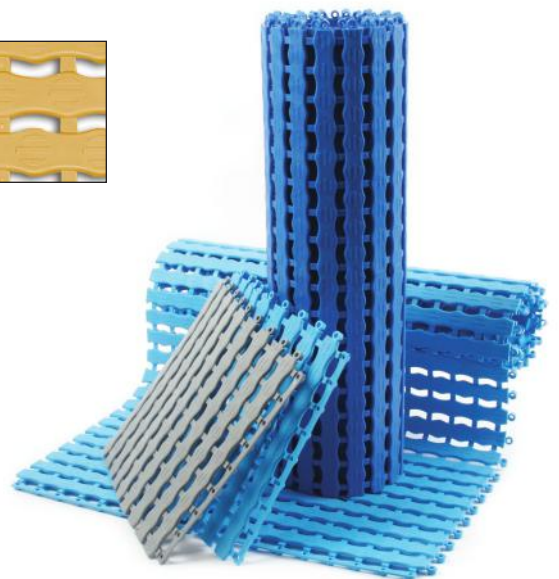


BEIGE

STANDARD SIZES

PRODUCT	HEIGHT	STANDARD TILE SIZE
Herontile	15mm (5/8")	33 x 33mm (13" x 13")

Available in packs of 27 tiles.



Plastic Extruders Ltd, Russell Gardens, Wickford, SS11 8DN, UK
Tel: +44(0)1268 571116

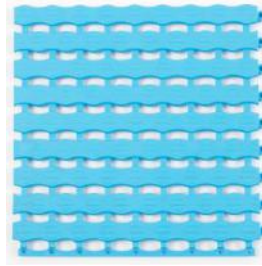
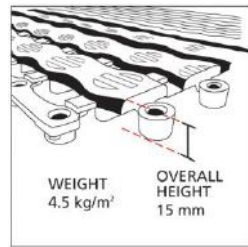
Web: www.plastexmatting.com

PRODUCT DATA SHEET: HERONTILE

Apr-17

SIZES & WEIGHTS

All dimensions are nominal	Height (mm)	Dimensions (cm)	Weight (kg/m ²)
Tolerances (mm)	+/- 0.5	+/- 1	
Herontile	15	33 x 33	4.5



GENERAL

APPEARANCES	Open grid with circular surface embossing.
COLOURS	Ocean Blue, Light Blue, Light Grey, Beige
WORKABILITY	Grid tiles with secure lock fit connection.
USES	Tile format for wet areas. For use inside only.

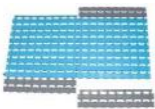
TECHNICAL DATA

ACOUSTIC	Excellent sound absorption properties.
COMPOSITION	Moulded Ethylene-Vinyl Acetate (EVA).
HYGIENE	Non-porous 100% Virgin EVA - Inhibits the growth of bacteria. BPR (EU Biocidal Products Regulation 528/2012): Contains Biocidal Products for improved performance. Use Herontile safely. Always read the label and product information before use. Anti-bacterial SteriTouch additive: Test JIS Z 2801:2000 Anti-fungal SteriTouch additive: Test method ASTM G21-09

SLIP RESISTANCE DIN 51097: Classification C

WARRANTY 4 years. See www.plastexmatting.com/uploads/4/4/0/0/44003899/warranty.pdf

ANCILLARIES



15mm x 7cm x 33cm

EVA ramped edging
Snap-on edging supplied in 33cm lengths (13")

Colours: Dark Grey, Ocean Blue