

Plastic Extruders Ltd

Russell Gardens, Wickford, Essex,
SS118DN, England
Sales Tel: +44(0)1268 571116
Fax: +44(0)1268 560027
www.plastex.co.uk
e-mail: sales@plastex.co.uk

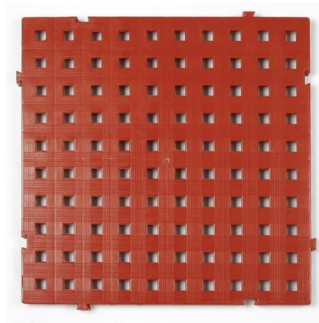


Plastex Matting Inc

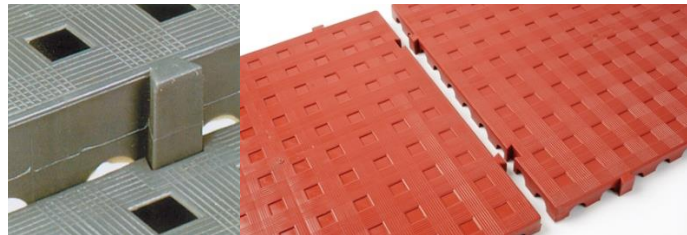
120 55th St NE, Fort Payne, Alabama, AL
35967, USA
Sales Tel: 256 845 7725
Fax: 256 845 6786
www.plastexmatting.com
e-mail: sales@plastexmatting.com

PLASTEX GRID INSTRUCTIONS (OPEN OR SOLID)

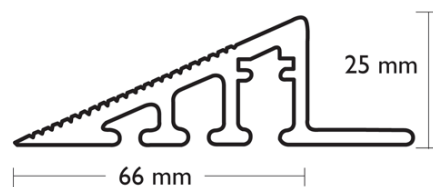
Nov 17



- 1) Plastex Grid is an interlocking tile, so simply slot the connection tag in the groove.



- 2) If you use the aluminium ramp, the ramp is screwed down to the floor with the screws provided:



- 3) When the aluminium ramp meets the side of the tile, the extra tag has to be removed by simply cutting it:

