

## 100% recycled heavy duty open grid PVC tiles

Plastex Lok is a hard wearing open grid tiling system, delivering long life and value for investment.

It can be used as a temporary or permanent flooring solution for coverage of large areas in the workplace with the likelihood of heavy spillage, such as work stations, finishing/assembly areas, laboratories, localized work cells and machine shops.

Plastex Lok's pimpled open grid surface guarantees excellent slip resistance (DIN 51130 R12) and, at the same time, facilitates drainage (DIN 51130 V10) and soil removal.



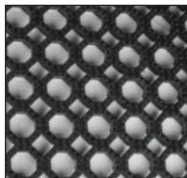
### BENEFITS

- Certified slip resistance DIN 51130: R12
- Excellent drainage DIN 51130: V10
- Chemical, oil and acid resistant
- Quick to install
- Environmentally-friendly
- Easy to cut on site, contours to uneven surfaces
- Finished areas

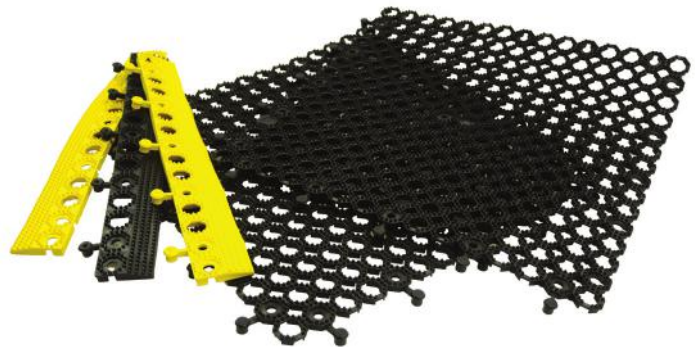
### FEATURES

- Pimpled surface
- Raised construction
- Non-porous PVC (impermeable to fluids)
- Interlocking tiles
- Made from 100% recycled material
- Made from flexible PVC
- PVC ramped edging

### STANDARD COLOR



BLACK



### STANDARD SIZES

PRODUCT	HEIGHT	STANDARD TILE SIZE
Plastex Lok	5/8" (16mm)	1'8" x 1'8" (0.5 x 0.5m)

Available in packs of 16 tiles



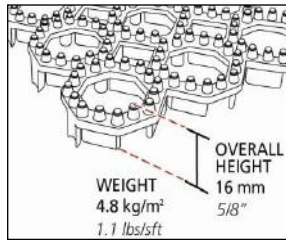
**Plastex Mattinc Inc.**, 120 55th Street NE Fort Payne, AL 35967 U.S.A.  
Sales Tel: 256.845.7725

Web: [www.plastexmatting.com](http://www.plastexmatting.com)

# PRODUCT DATA SHEET: Plastex Lok

## SIZES & WEIGHTS

<i>All dimensions are nominal</i>	Height (in)	Standard tile size (in)	Weight (lbs./sq.ft.)
<i>Tolerances</i>	<i>+/- 0.05"</i>	<i>+/- 1/2"</i>	
Plastex Lok	5/8"	1'8" x 1'8"	1.10



## GENERAL

- APPEARANCES** Open grid with pimpled surface.
- COLORS** Available in homogenous standard color; Black.
- DURABILITY** One piece welded construction for maintenance free life.
- WORKABILITY** Heavy duty tiles with secure interlocking connection.
- USES** Heavy duty for work stations, finishing/assembly areas, laboratories, localized work cells and machine shops.

## TECHNICAL DATA

- ACOUSTIC** Excellent sound absorption properties.
- CHEMICAL** Resistant to most acids, alkalines and oils. For specific chemical resistances, see [www.plastexmatting.com/uploads/4/4/0/0/44003899/pvc-chemical-resistance.pdf](http://www.plastexmatting.com/uploads/4/4/0/0/44003899/pvc-chemical-resistance.pdf)
- COMPOSITION** Recycled PVC. Plasticized to a shore hardness of 55 Shore A.
- ENVIRONMENT** Made from 100% post-industrial recycled PVC.
- FIRE** UL 94 V-2
- REVERSION** Thermoplastic shrinkage can result in size reductions up to 2%. Accelerated in hot environments. Refer to [www.plastexmatting.com/uploads/4/4/0/0/44003899/vinyl-matting-dimensional-stability.pdf](http://www.plastexmatting.com/uploads/4/4/0/0/44003899/vinyl-matting-dimensional-stability.pdf)
- SLIP RESISTANCE** DIN 51130: R12, V10
- THERMAL** Functional -9<sup>o</sup>F +140<sup>o</sup>F (slight size variation may occur at temperature extremes).
- UV LIGHT** Resistance to PVC degradation.
- WARRANTY** 2 years. See [www.plastexmatting.com/uploads/4/4/0/0/44003899/warranty.pdf](http://www.plastexmatting.com/uploads/4/4/0/0/44003899/warranty.pdf)

## ANCILLARIES



1/2" x 2" x 1'8"

(12mm x 50mm x 500mm) **Colors:** Black, Yellow

**2" PVC edging strip**  
Male and female strips available.  
Supplied in 51'8" lengths (50cm).



**Connector clips - End to end**  
For joining two ends of the edging together.  
One lug is supplied for every two pieces of edging in the relevant color.

**Colors:** Black, Yellow



1/2" x 2" x 2"

(12mm x 50mm x 50mm) **Colors:** Black, Yellow

**2" PVC edge corner**



**Plastex Matting Inc.**, 120 55th Street NE Fort Payne, AL 35967 U.S.A.  
Sales Tel: 256.845.7725

Web: [www.plastexmatting.com](http://www.plastexmatting.com)