

TUFF SPUN DECK

Foam matting with heavy duty deck-top surface

For dry commercial and workplace environments.

Tuff Spun Deck has a wear foam layer for comfort with a checker plate embossed vinyl foam for added traction, abrasion and puncture resistance.



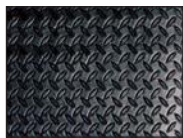
BENEFITS

- Certified wear resistance **ASTM 4060:** <0.2 gram loss
- Good slip resistance
- Extra cushion comfort
- Quick to install

FEATURES

- Heavy duty deck-top surface
- Embossed surface
- 9/16" thickness
- Supplied in 60' (18m) rolls or standard modules

STANDARD COLOR



BLACK



STANDARD SIZES

PRODUCT	HEIGHT	STANDARD ROLL OPTION*	STANDARD MODULE OPTIONS*		
Tuff Spun Deck	9/16" (14mm)	3' x 60' (0.91 x 18m)	2' x 3' (0.6 x 0.91m)	3' x 5' (0.91 x 1.5m)	3' x 10' (0.91 x 3m)

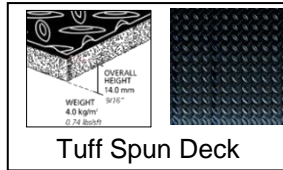
*Supplied with integral edging to 4 sides.

PRODUCT DATA SHEET: TUFF SPUN DECK

Jun-18

SIZES & WEIGHTS

<i>All dimensions are nominal</i>	Height (in)	Length (ft)	Width (ft)	Module options (ft)	Weight (lbs/sq.ft)
<i>Tolerances</i>	<i>+/- 0.05"</i>	<i>0+1.0'</i>	<i>+/- 1/2"</i>		
Tuff Spun Deck	9/16"	60'	3'	2' x 3' 3' x 5' 3' x 10'	0.74



GENERAL

APPEARANCES	Checker plate vinyl foam on a foam layer. Supplied with integral edging to 4 sides.
COLOUR	Black
DURABILITY	Extruded vinyl foams.
WORKABILITY	Available in rolls for ease of installation. Easy to cut to size and shape.
USES	Checker plate foam for added traction and puncture resistance.

TECHNICAL DATA

ACOUSTIC	Excellent sound absorption properties.
COMPOSITION	Vinyl foam.
THERMAL	Functional -9°F +140°F (slight size variation may occur at temperature extremes).
WARRANTY	1 year. See www.plastexmatting.com/uploads/4/4/0/0/44003899/warranty.pdf

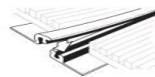
ANCILLARIES



9/16" x 2 1/2" x 33'
(14mm x 60mm x 10.1m)

2 1/2" PVC edging strip

Supplied in rolls of 33' (10.1m) length with cold welding paste.
Colors: Black, Dark Gray, Dark Brown, Holly Green, Oxford Blue, Yellow



13/32" x 8'2"
(10.5mm x 2.5m)

Snap Track Low Profile

2 part snap track can be welded to join rolls end to end or side to side for large area covering. Supplied with cold welding paste.
Colors: Black, Dark Gray



Plastex Matting Inc., 120 55th Street NE Fort Payne, AL 35967 U.S.A.
Sales Tel: 256.845.7725

Web: www.plastexmatting.com