

Z E D C H E X

Versatile, multi-purpose matting for any workplace

Checker plate vinyl surface on a thermally laminated patented Zed Land high density foam.

Multi-purpose, anti-fatigue matting comprising Zed Land blue foam thermally fused with a robust, slip resistant wear surface in a checker plate design.

Chemical, oil and acid resistant.



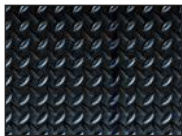
BENEFITS

- High wear resistance and resilience
- Extra slip resistance
- Excellent standing fatigue reducing properties will boost productivity
- Easy to cut to shape and quick to install

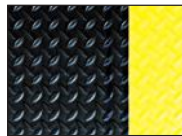
FEATURES

- Minimal wear standing foam which will not deaden
- Checker plate vinyl surface
- Patented vinyl foam construction with superior resilience
- Supplied in 60' (18m) rolls or standard modules

STANDARD COLORS



BLACK



BLACK WITH
YELLOW EDGING

Zed Chex Plus with yellow edging to increase visual safety in any area of the workplace.



STANDARD SIZES

| PRODUCT | HEIGHT | STANDARD ROLL OPTIONS* | | STANDARD MODULE OPTIONS* | | | |
|---------------|----------------|--------------------------|--------------------------|--------------------------|--------------------------|-------------------------|-------------------------|
| Zed Chex | 1/2" (13mm) | 3' x 60' (0.91 x 18m) | 4' x 60' (1.22 x 18m) | 2' x 3' (0.6 x 0.91m) | 3' x 5' (0.91 x 1.5m) | 3' x 10' (0.91 x 3m) | 3' x 20' (0.91 x 6m) |
| Zed Chex Plus | 1/2" (13mm) | 3' x 60' (0.91 x 18m) | | 2' x 3' (0.6 x 0.91m) | 3' x 5' (0.91 x 1.5m) | 3' x 10' (0.91 x 3m) | 3' x 20' (0.91 x 6m) |

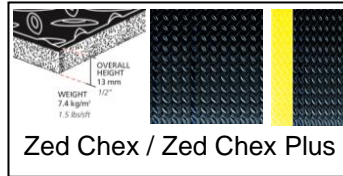
*Supplied with integral edging to 4 sides.

PRODUCT DATA SHEET: ZED CHEX

Jun-18

SIZES & WEIGHTS

| | <i>All dimensions are nominal Tolerances</i> | Height (in) +/- 0.05" | Length (ft) 0+1.0' | Widths (ft) +/- 1/2" | Module options (ft) | Weight (lbs/sq.ft) |
|---------------|--|--------------------------|-----------------------|-------------------------|--|--------------------|
| Zed Chex | | 1/2" | 60' | 3' 4' | 2' x 3' 3' x 5' 3' x 10' 3' x 20' | 1.5 |
| Zed Chex Plus | | 1/2" | 60' | 3' | 2' x 3' 3' x 5' 3' x 10' 3' x 20' | 1.5 |



GENERAL

| | | |
|-------------|---|---|
| APPEARANCES | Checker plate vinyl surface on a thermally laminated patented Zed Land high density foam. Supplied with integral edging to 4 sides. | |
| COLOURS | Zed Chex: Black on Blue Zed Land foam | Zed Chex Plus: Black with Yellow |
| DURABILITY | Foam thermally fused to top vinyl surface. | |
| WORKABILITY | Available in rolls for ease of installation. Easy to cut to size and shape. | |
| USES | Heavy duty foam matting for industrial applications. | |

TECHNICAL DATA

| | | |
|--------------|---|--|
| ACOUSTIC | Excellent sound absorption properties. | |
| ANTI-FATIGUE | Resilience ASTM 2362 | Zed Chex = 23 |
| COMPOSITION | Vinyl foam/vinyl wear layer. | |
| THERMAL | Functional -9°F +140°F (slight size variation may occur at temperature extremes). | |
| WARRANTY | 2 years. See | www.plastexmatting.com/uploads/4/4/0/0/44003899/warranty.pdf |



Plastex Matting Inc., 120 55th Street NE Fort Payne, AL 35967 U.S.A.
Sales Tel: 256.845.7725

Web: www.plastexmatting.com