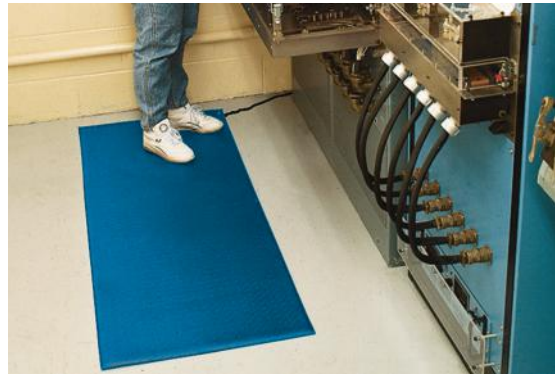
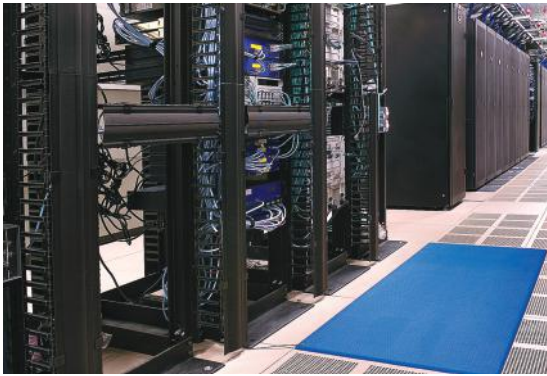


Patented foam construction with ESD properties

Made from high molecular density foam with 'bounce' properties up to 4 times as effective as standard foam matting for improved comfort and productivity.

Zed Land will lend comfort and improve productivity. Dropped components will also be protected from accidental damage. Zed Land will not deaden and shows minimal wear after 2000 taber abrador cycles in test conditions to ASTM D4060.



BENEFITS

Certified wear resistance **ASTM 4060: $\leq 1.5\%$ ***

Good slip resistance

Excellent standing fatigue reducing properties will boost productivity

Easy to cut to shape and quick to install

Provides underfoot comfort in static sensitive environments

FEATURES

Minimal wear standing foam which will not deaden

Embossed pebble surface

Patented vinyl foam construction with superior resilience

Supplied in 60' (18m) rolls or standard modules

Electrostatic dissipative (ESD) properties
Certified **ASTM D257: 10^9**

STANDARD COLORS

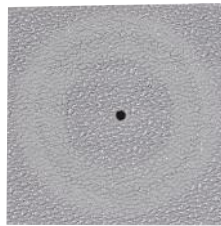


BLUE



DARK GRAY

Other colors available on request.



*ASTM 4060 @ 2000 cycles

STANDARD SIZES

PRODUCT	HEIGHT	STANDARD ROLL OPTION	STANDARD MODULE OPTIONS		
Zed Land	3/8" (9mm)	3' x 60' (0.91 x 18m)	2' x 3' (0.6 x 0.91m)	3' x 5' (0.91 x 1.5m)	3' x 10' (0.91 x 3m)

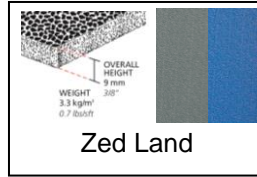


PRODUCT DATA SHEET: ZED LAND

Jun-18

SIZES & WEIGHTS

	<i>All dimensions are nominal</i>			Module options (ft)	Weight (lbs/sq.ft)
	Height (in)	Length (ft)	Width (ft)		
	<i>Tolerances</i>	<i>+/- 0.05"</i>	<i>0+1.0'</i>	<i>+/- 1/2"</i>	
Zed Land	3/8"	60'	3'	2' x 3' 3' x 5' 3' x 10'	0.74



GENERAL

APPEARANCES	Single layer foam. Supplied with integral edging to 4 sides.
COLORS	Blue or Dark Gray.
DURABILITY	Extruded vinyl foam.
WORKABILITY	Available in rolls for ease of installation. Easy to cut to size and shape.
USES	Anti-fatigue mat for indoor use, mainly dry areas.

TECHNICAL DATA

ACOUSTIC	Excellent sound absorption properties.
ANTI-FATIGUE	Resilience ASTM 2362 Zed Land = 33
COMPOSITION	Vinyl foam.
ELECTROSTATIC DISCHARGE (ESD)	ASTM D257 Zed Land = 10⁷
THERMAL	Functional -9 ⁰ F +140 ⁰ F (slight size variation may occur at temperature extremes).
WARRANTY	Total confidence warranty. See www.plastexmatting.com/uploads/4/4/0/0/44003899/warranty.pdf

ANCILLARIES



3/8" x 2" x 33'
(10mm x 50mm x 10.1m)

2" PVC edging strip

Supplied in rolls of 10.1m (33') length with cold welding paste.
Colors: Black, Dark Gray
Holly Green, Oxford Blue, Yellow



1 3/32" x 8'2"
(10.5mm x 2.5m)

Snap Track Low Profile

2 part snap track can be welded to join rolls end to end or side to side for large area covering. Supplied with cold welding paste.
Colors: Black, Dark Gray

