



### How do you provide a safe and comfortable barefoot experience for the 400,000 people who visit Iceland's famous Blue Lagoon each year?

The Blue Lagoon Geothermal Spa is the largest of its kind in the world, meaning high visitor traffic and huge volumes of water. After complaints of slippery surfaces, management knew they needed a slip-resistant, hygienic and comfortable surface that could be loose laid across the entire spa.

#### The problem

The number one tourist destination in Iceland, the Blue Lagoon is the largest geothermal seawater spa in the world. With over 400,000 people visiting the spa, hotel and adjacent wellness centre each year, there's a huge volume of barefoot traffic contributing to massive quantities of displaced water. There was also an issue with the silica that's added to the spa water, which made the tiles in the changing and shower area extra slippery. The Blue Lagoon needed a surface solution that would prevent slips, protect from bacterial contamination and provide comfort underfoot.

#### The checklist

- ✓ Quickly drains large volumes of water
- ✓ Withstands extreme temperatures, as well as salts, silica, sulphur and chemicals
- ✓ Protects bare feet from bacterial contamination
- ✓ Can be loose laid over uneven and slippery surfaces
- ✓ Comfortable to walk on

#### At a glance



##### Client

Blue Lagoon Geothermal Spa

##### Brief

A hygienic, comfortable and slip-resistant surface for decking, jetties, shower rooms and changing rooms.

##### Location

West Sussex, UK

##### Environment

Walkway

##### Industry

Leisure

##### Needs

Cushioning, drainage, slip resistance, spillage

#### Plastic Extruders Ltd.

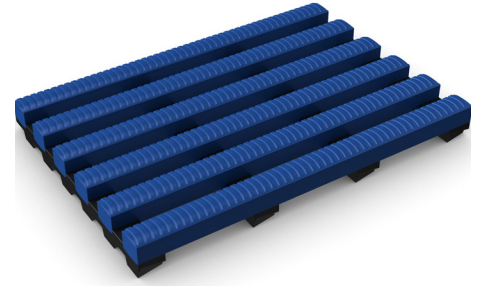
Russell Gardens, Wickford  
Essex, SS11 8DN  
+44 (0) 1268 571 116

UK + USA manufactured  
matting products:  
[plastexmatting.com](http://plastexmatting.com)



# Case Study

## Heronrib



### The solution

High visitor numbers and multiple thermal pools required a matting solution that could quickly self-drain, while also remaining comfortable underfoot. After testing several products, Heronrib in dark grey was selected for the changing rooms and shower areas, as well as the decking and jetties leading out to the lagoon.

Specifically designed for wet areas with high barefoot traffic, Heronrib automatically self-drains – even when faced with the largest amounts of water. The embossed surface delivers grip and comfort underfoot, while the antimicrobial and anti-fungal additives ensures excellent hygiene. Designed for use inside and outside, Heronrib is UV resistant, plus able to withstand extreme weather conditions – perfect for a climate like Iceland.

“Heronrib has really solved a problem for us. Previously, we had an issue with guests slipping over on the wet decking. Installing the matting has totally eliminated the problem and we are now happy that our guests can use our wonderful facilities with the minimum of risk.”

Hartmann Kárason, facilities director,  
Blue Lagoon



### Product spotlight: Heronrib

Keep bathing and washing areas safe with Heronrib, the ultimate slip-resistant sports and leisure matting designed to withstand extensive barefoot traffic.

### Features:



Embossed surface



Two-layer construction and channelled underbars



Anti-microbial and anti-fungal additives



Made from flexible PVC



UV resistant

### Benefits:



Certified slip resistance  
(DIN 51097: C; ASTM 1677: 0.9/0.7)



Four-way drainage



Excellent hygiene, easy to clean



Easy to cut to fit; contours to uneven surfaces



Can be used indoor or outdoor