

# Case Study

## Frontrunner XT



### How do you prevent slips and reduce noise from foot traffic in a busy apartment block?

After residents complained about slippery surfaces and loud footsteps in their apartment block in northern France, the local housing association set out to find a slip-resistant solution that would also help contain noise.

#### The problem

One of the local housing associations in northern France started receiving complaints from residents about unsafe surfaces and excessive noise. The building in question was a busy apartment complex that comprised of four separate buildings all linked by walkways and common areas. Residents and visitors were slipping in the uncovered passageways, particularly in wet weather, and weren't happy with noise created by echoing pedestrian foot traffic.

#### The checklist

- ✓ Certified slip resistant
- ✓ Reduce ongoing maintenance and labour costs
- ✓ Withstand high levels of traffic, and be heel and wheel proof
- ✓ Improve ambient acoustics and reduce echoing footsteps
- ✓ Remain stable in all weather conditions

#### At a glance



##### Client

Housing association

##### Brief

High performance, durable matting that solves the dual problem of slipping and noisy echoes.

##### Location

Northern France

##### Environment

Walkway

##### Industry

Residential

##### Needs

Drainage, fall through, heavy duty, slip resistance

#### Plastic Extruders Ltd.

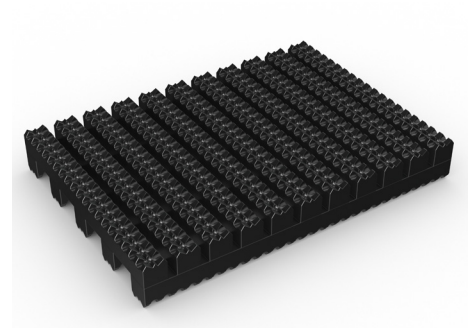
Russell Gardens, Wickford  
Essex, SS11 8DN  
+44 (0) 1268 571 116

UK + USA manufactured  
matting products:  
[plastexmatting.com](http://plastexmatting.com)



# Case Study

## Frontrunner XT



### The solution

French flooring distributor Socofra Ubo recommended Frontrunner XT, our extra slip-resistant entrance matting, as the perfect solution for these dual problems. Specifically designed for high traffic external areas, like walkways and outdoor decking, it has a diamond tread pattern that delivers excellent slip resistance and traction underfoot.

A hallmark of this matting is superior drainage: the open-grid dissipates water quickly and easily, and the aggressive tread pattern ensures any dirt and debris is collected and trapped. Frontrunner XT's close mesh construction allows for easy access for wheelchairs and prams, while the two-layer PVC effectively dampens and absorbs noise.

"Frontrunner XT has proved to be very effective and the Housing Association is really pleased. It gives residents a good slip resistant surface on which to walk and also helps combat the problems of noisy communal walkways and passageways."

[Estelle Coustenoble, Socofra Ubo](#)



### Product spotlight: Frontrunner XT

Frontrunner XT is a heavy-duty entrance mat designed to combat substantial amounts of dirt and large debris.

#### Features:



Diamond cut pattern



Two layer open-grid construction



Close mesh grid



Made from flexible PVC



Comes in 10m (33') rolls

#### Benefits:



Certified slip resistance  
(DIN 51130: R12)



Excellent drainage (DIN 51130: V10)



Wheel- and heel-proof



Easy to cut on site, contours to uneven surfaces



Seamless installation