

# Case Study

## Crossgrip PVC



### How do you ensure safe access for maintenance workers on a rooftop that has messy pipes, electrical conduits and frequent rain?

A large Tesco supermarket in the east of England needed a rooftop solution that would provide clear and safe passageways for maintenance workers to carry out essential tasks.

#### The problem

Like many other supermarkets of its size, the Tesco in Pitsea, Essex has a rooftop that's covered in cables, pipes, slippery surfaces and surface units. With a steady stream of staff needing regular access to the roof, the building owners knew they needed to find an easy and safe way for maintenance engineers to access the roof without damaging the membrane.

#### The checklist

- ✓ Loose laid, easy to install and have minimum maintenance over its life cycle
- ✓ Remains stable in high winds and withstands extreme weather conditions
- ✓ Quickly drains and dissipates liquids and debris
- ✓ Resistant to bacterial growth and impermeable in all weathers
- ✓ Protects the roof membrane from damage

#### At a glance

##### Client

Tesco supermarket

##### Brief

Highly durable, slip-resistant matting that provides safe access to the rooftop while protecting the membrane.

##### Location

Essex, England, UK

##### Environment

Walkway

##### Industry

Retail

##### Needs

Drainage, heavy duty, slip resistance, spillage, surface protection



#### Plastic Extruders Ltd.

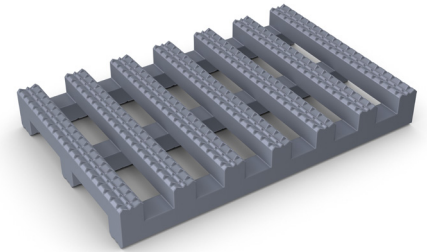
Russell Gardens, Wickford  
Essex, SS11 8DN  
+44 (0) 1268 571 116

UK + USA manufactured  
matting products:  
[plastexmatting.com](http://plastexmatting.com)



# Case Study

## Crossgrip PVC



### The solution

Creating safe walkways amongst the mass of cables and pipes was key, so the solution needed to be easy to install on a crowded roof, plus ensure extra traction underfoot. The answer was Crossgrip PVC, our specialised rooftop matting that's designed to be loose laid with no fixing required. Made from flexible PVC, it contours over uneven surfaces, including membrane seams, ramps and changes in levels, and is easy to cut to fit around obstacles.

The durable, two-layer construction protects the roof membrane, while the diamond-cut pattern and cross-directional top ribs ensures a firm under foot grip. The matting remains stable in winds up to 60mph (96km/h).

“Crossgrip has had a dramatic effect. In the winter time, even I was reluctant to go out onto the roof as the membrane was very slippery. Now we have safe access any time of the year and in all weathers. It's made a big difference to us and the safety of our maintenance teams. The grip underfoot is very impressive and we feel a lot happier and safer negotiating the rooftop pipes, conduits and obstacles.”

Moidean, maintenance engineer, Tesco



### Product spotlight: Crossgrip PVC

Our highly specialised walkway matting for flat roofs, gantries and high level walkways, Crossgrip PVC is certified slip resistant and able to withstand all types of weather.

#### Features:



Diamond cut pattern



Two-layer construction



Flexible, one-piece construction



Loose lay, no fixing required



Supplied in 10m rolls

#### Benefits:



Certified slip resistance  
(DIN 51130: R10; ASTM 1677: 1.0/0.9)



Excellent drainage (DIN 51130: V10)



Contours to roof structure and protects the membrane



Stable in winds up to 60mph (96km/hr)



Quick to install