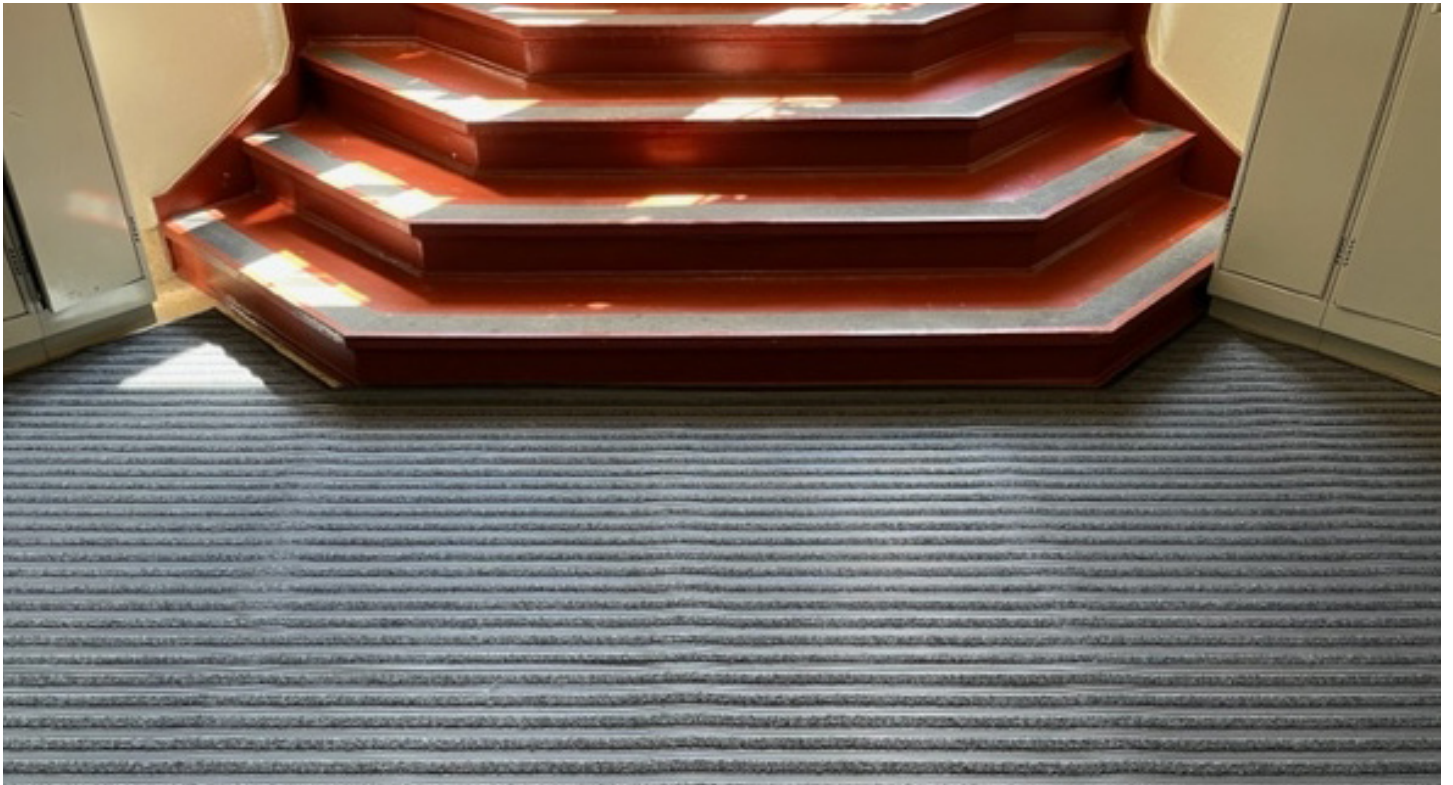


# Case Study

## Frontrunner SB+



### Frontrunner SB+ Plus keeps dirt and moisture out of this Toronto college's classrooms

Canadian school Havergal College needed a durable matting solution to trap dirt and absorb water from its high foot traffic cohort of over 1,200 students and teachers

#### The problem

In 2022, Toronto's Havergal College found themselves struggling with their original carpet entry mats: they were retaining water and dirt, the colour was fading, and they were difficult to keep clean.

This meant dirt was regularly tracked inside and spread throughout the hallways and classrooms. Plus, because the pile was so thin, the carpet matting was bunching up under heavy foot traffic and becoming a trip hazard for both staff and students. The school needed a durable safety solution that was quick to install and would match its high-end aesthetic, with custom sizing and a finished edge.

#### The checklist

- ✓ Easy to clean and maintain
- ✓ A surface-mounted solution
- ✓ Customisable for different entrance designs

#### At a glance



##### Client

Havergal College

##### Brief

Durable entrance matting that effectively scrapes, cleans and dries shoes and wheels at the school's entrances.

##### Location

Toronto, Canada

##### Environment

Entrances

##### Industry

Education

##### Needs

Slip resistance, drainage, heavy-duty, fall through

#### Plastic Extruders Ltd.

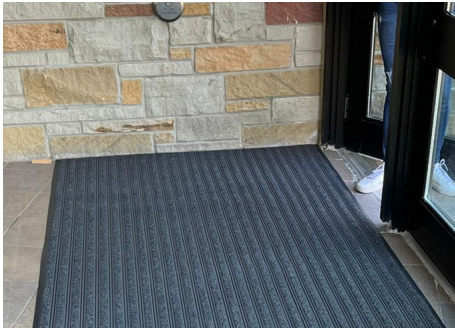
Russell Gardens, Wickford  
Essex, SS11 8DN  
+44 (0) 1268 571 116

UK + USA manufactured  
matting products:  
[plastexmatting.com](http://plastexmatting.com)



# Case Study

## Frontrunner SB+



### The solution

We recommended our solid-backed entrance mat Frontrunner SB+. Just like all the mats in our popular Frontrunner entrance system range, SB+ features a unique 'scrape and clean' system that helps protect internal floor finishings and reduces cleaning costs.

Wheel and heel-proof, the mat's etched surface scrapes shoes clean while the carpet inserts absorb moisture, effectively stopping unwanted debris and liquid from being tracked inside.

Its stylish design fits seamlessly with Havergal's interior decor, and the solid back contours to the existing flooring, negating any need for a recessed mat well.

"The ease of ordering custom-made surface mats to fit multiple entryways made installation quick and easy, and our feedback from Havergal has been positive.

They said 'the matting has lived up to expectations and continues to perform. The maintenance staff are happy with the selection, as they don't have to constantly mop up the area around the matting in the multiple entrances to the college. Safety of the students and staff is paramount and this matting is another step in that endeavour.'

Aftab Khan  
Flooring + Home



### Product spotlight: Why Frontrunner SB+?

Frontrunner SB+ is a solid-backed internal entrance mat that helps reduce slips and stops tracked-in dirt and moisture at the door.

#### Features:



Etched pattern



One layer hollow construction



Ribbed vinyl pattern with solid backing



6.5mm grid height



Close mesh grid

#### Benefits:



Certified slip resistant  
DIN 51130:RI I, ASTM E303: Dry - 74 (with lines), 95 (across lines);  
Wet - 61 (with lines), 64 (across lines)



Light to handle



Easy to install, no need for recessed mat well



Loose lay or adhere to subfloor



Wheel proof and heel proof