

Case Study

Frontrunner SB+



Frontrunner SB+ Plus keeps dirt and moisture out of this Toronto college's classrooms

Canadian school Havergal College needed a durable matting solution to trap dirt and absorb water from its high foot traffic cohort of over 1,200 students and teachers.

The problem

In 2022, Toronto's Havergal College found themselves struggling with their original carpet entry mats: they were retaining water and dirt, the color was fading, and they were difficult to keep clean.

This meant dirt was regularly tracked inside and spread throughout the hallways and classrooms. Plus, because the pile was so thin, the carpet matting was bunching up under heavy foot traffic and becoming a trip hazard for both staff and students. The school needed a durable safety solution that was quick to install and would match its high-end aesthetic, with custom sizing and a finished edge.

The checklist

- ✓ Easy to clean and maintain
- ✓ A surface-mounted solution
- ✓ Customisable for different entrance designs

At a glance



Client

Havergal College

Location

Toronto, Canada

Brief

Durable entrance matting that effectively scrapes, cleans, and dries shoes and wheels at the school's entrances.

Environment

Entrances

Industry

Education

Needs

Slip resistance, drainage, heavy-duty, fall through

Plastex Matting Inc.

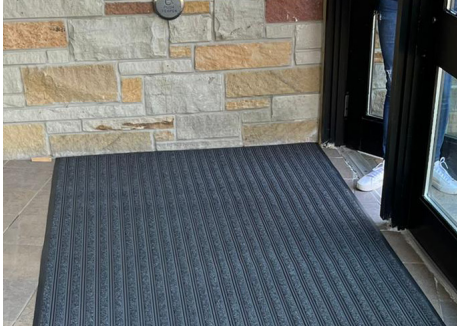
120 55th St NE
Fort Payne, AL 35967
+1 256 845 7725

USA + UK manufactured
matting products:

plastexmatting.com

Case Study

Frontrunner SB+



The solution

We recommended our solid-backed entrance mat Frontrunner SB+. Just like all the mats in our popular Frontrunner entrance system range, SB+ features a unique 'scrape and clean' system that helps protect internal floor finishings and reduces cleaning costs.

Wheel and heel-proof, the mat's etched surface scrapes shoes clean while the carpet inserts absorb moisture, effectively stopping unwanted debris and liquid from being tracked inside.

Its stylish design fits seamlessly with Havergal's interior decor and the solid back contours to the existing flooring, negating any need for a recessed mat well.

"The ease of ordering custom-made surface mats to fit multiple entryways made installation quick and easy, and our feedback from Havergal has been positive.

They said the matting has lived up to expectations and continues to perform. The maintenance staff are happy with the selection, as they don't have to constantly mop up the area around the matting in the multiple entrances to the college. Safety of the students and staff is paramount and this matting is another step in that endeavor."

Aftab Khan
Flooring + Home



Product spotlight: Why Frontrunner SB+?

Frontrunner SB+ is a solid-backed internal entrance mat that helps reduce slips and stops tracked-in dirt and moisture at the door.

Features:



Etched pattern



One-layer hollow construction



Ribbed vinyl pattern with solid backing



1/4" (6.5mm) grid height



Close mesh grid

Benefits:



Certified slip resistant
(DIN 51130: R11, ASTM C1028: 0.6/0.6)



Lightweight



Easy to install, no need for recessed mat well



Loose lay or adhere to subfloor



Wheel proof and heel proof