

July 2017

Frontrunner Entrance Flooring Systems



www.plastexmatting.com

Plastic Extruders Ltd.



Our Mission *A Mat for All Reasons*

Our mission is to add to our distributors, and in turn their customers, profitability, safety, productivity and style by designing and manufacturing cutting edge matting for all work, education and leisure environments.

Our Values

Founded in 1962, Plastic Extruders Ltd (Plastex) are a second generation family run firm with long serving employees who take personal responsibility for maintaining the highest service standards and delivering the right solution on time and on budget.

Working with you to meet your needs

- Through our design and innovation programme we work with our customers to constantly improve the form, function and cost effectiveness of our products.

So, though we have an extensive range suitable for most applications, we often fulfill individual customer needs by producing bespoke solutions. If you feel you may have one we would be pleased to hear from you. ☺



PETER O'SULLIVAN
Sales Director

DAVID O'SULLIVAN
Managing Director

Plastic Extruders Ltd UK & Plastex Matting Inc USA

Follow **Plastex Matting** on:

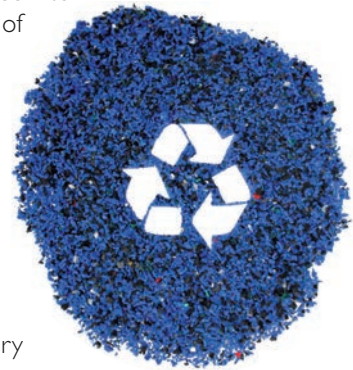




Plastex *and the environment*

As a global supplier with manufacturing plants in the UK and the USA, we constantly seek to reduce the environmental impact of our manufacturing processes.

For example, all our black matting is made with up to 100% post-industrial recycled material, but always with a minimum content of 30%.



To further minimise impact and avoid waste, we don't throw away any materials. All our factory trimmings and production process scrap are re-used in our own production. We do not re-sell any material to 3rd party reproprocessors.

In compliance with REACH regulation

The 2007 European Community REACH regulation (Registration, Evaluation, Authorisation and Restriction of Chemicals) gives manufacturers the responsibility of providing high level human and environmental protection from the use of chemicals in manufacturing.

Plastex does not use any substances currently included on the SVHC (Substances of Very High Concern) list under REACH, including "DEHP" Di(2-ethylhexyl) phthalate, also known as Di-octyl phthalate (DOP), plasticiser.

Further information can be found at www.plastexmatting.com.

Matting & flooring
manufactured in Europe
and the USA.

- Distributed worldwide



Ensure you have been supplied with a genuine Plastex product



To avoid plagiarism, today we emboss the trademarked names on the underside of our grid matting.

Testing and Measurement

In our constant pursuit of excellence, we subject our products to the rigors of scientific testing. This includes external testing through international bodies, but we don't stop there. If an external test doesn't exist, we will commission a University research project. Plastex continually strives to ensure we maintain the highest standards expected by our customers worldwide.

Plastex

Three levels of service

Once we've established your exact need, we'll recommend the product that is right for you, from our three levels of service.

General Purpose

We have an extensive range of general purpose matting designed for various environments. So whether you're looking for comfort, slip resistance, soil removal or increased hygiene, we will have the product for you.

Specialist

We have also built up a full range of products for demanding specialist environments such as light and heavy industrial, as well as food preparation both big and small.

Bespoke

If we can't exactly meet your needs from our current range, we will design and manufacture a mat specifically for you.

Whatever your requirements we will put all our knowledge and care into delivering exactly the mat you need, on time and on budget - 'A mat for all reasons'.

Why is Entrance Flooring important?

Choosing the right entrance flooring matters for three good reasons:

- Style
- Health and Safety
- Cleanliness and Durability

Style

Your entrance flooring is, by definition, one of the first things clients and visitors see; so it plays a vital role in creating first impressions. As you'll see from the location pictures in this brochure our range of colours, custom logos, styles and tread patterns will make sure you get it right.

Health and Safety

Unfortunately, we live in a litigious age which is why it's good to know the Frontrunner entrance matting products are tested under DIN 51130 and achieved ratings as high as R12. This means they have been tested to be slip resistant at an angle of 27°, even when wet. This translates to peace of mind that your entrance flooring system is independently tested giving a performance safe entrance flooring. Additionally, the Frontrunner Entrance Flooring System conforms to the requirements of the BS 8300:2009 Design of buildings and their approaches to meet the needs of disabled people.

Cleanliness and Durability

Up to 80% of dirt comes into your building on shoes or wheels. All Frontrunner entrance flooring is designed to remove, trap and hide this dirt from the traffic areas until it is easily removed during cleaning.

Our flooring deals with dirt so effectively that it will expand the life of your internal floor finishes and will help reduce your cleaning intervals. Frontrunner's one piece welded roll format ensures a durable and effective product. For further peace of mind, many of the installations shown in this brochure have been in place for ten years or more and still look as good as the day they were fitted.

Why Frontrunner Entrance Flooring System?

- 100% recyclable and REACH* compliant vinyl grid
- Meets the requirements of the UK Disability Discrimination Act - BS 8300:2009
- Excellent Fire rating - EN & ASTM
- Available in rolls for seamless, quick and easy installations on-site
- Loose lay open grid construction removes dirt from traffic area and eases cleaning
- R12 slip resistance rating under DIN 51130 on Frontrunner XT and R11 rating on Frontrunner Entry, Frontrunner SB and Frontrunner SB+
- Frontrunner Plus available in 50 different colour combinations. May also be customised with the incorporation of a logo panel
- It qualifies for IEQ Credit 5: Indoor Chemical and Pollutant Source Control LEED 2009 for New Construction and Major Renovations Rating System



ISO 9001 accredited (since 1993) ensures quality entrance flooring systems that are fit for purpose.



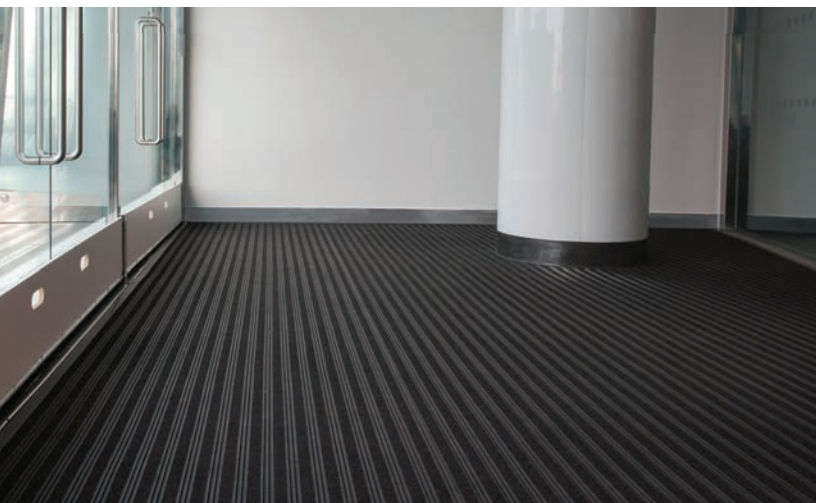
Founder Member

Directive EC 1907/2006 – Annex I



* Registration, Evaluation, Authorisation and Restriction of Chemical substances.

FRONTRUNNER ENTRANCE FLOORING SYSTEM



Vinyl Entrance Flooring System for high traffic areas

Recommended and Installed Worldwide for:

- Hotels • Hospitals • Industrial sites • Leisure facilities
- Office/Banks • Public buildings • Restaurants
- Retail locations • Schools • Supermarkets



Which Frontrunner Entrance Flooring System is right for you?

Depending on the surface you are looking to cover and amount of traffic, we recommend choosing a primary matting for effective removal of dirt and a secondary matting for removal of any residual dirt and drying of moisture.

| PRODUCT | FRONT/ SIDE ELEVATION | SLIP RESISTANCE | SCRAPER | MOISTURE REMOVAL | LOCATION | USAGE |
|--|--------------------------|--------------------|---------|---------------------|---|---|
| VINYL OPEN GRID CONSTRUCTION - PRIMARY MATTING | | | | | | |
| Frontrunner Entry Frontrunner Entry Low Profile p. 6 | | | | | B | High traffic internal areas. |
| Frontrunner XT p. 7 | | | | | A <small>(also ideal for walkways, balconies and decking)</small> | High traffic internal or external areas. |
| VINYL OPEN GRID CONSTRUCTION WITH BRUSH INSERTS - PRIMARY MATTING | | | | | | |
| Frontrunner Brush p. 8 | | | | | A | Maximum dirt removal in internal/external areas. |
| Frontrunner Brush Wide p. 9 | | | | | A | Larger debris removal in external areas. |
| VINYL OPEN GRID CONSTRUCTION WITH ABSORBENT INSERTS - SECONDARY MATTING | | | | | | |
| Frontrunner Plus Frontrunner Plus Low Profile p. 10 | | | | | B C | Maximum moisture removal in high traffic internal areas. |
| VINYL OPEN RIBBED CONSTRUCTION WITH A SOLID BACK - SECONDARY MATTING | | | | | | |
| Frontrunner SB p. 14 | | | | | B | Surface mounted in high traffic internal areas. |
| Frontrunner SB+ p. 15 | | | | | B C | Surface mounted moisture removal in high traffic internal areas. |



FRONTRUNNER ENTRY

Open grid, slip resistant and heel-proof matting

A uniquely effective matting to help prevent dirt from entering buildings in high traffic internal areas.

The aggressive diamond tread pattern scrapes dirt off shoes, whilst the 14mm (9/16") open grid structure allows it to fall out of the way. This efficient, high quality, 'scrape and clean' system also protects internal floor coverings and significantly reduces cleaning costs.

The special close space design of the open grid bars also allows the product to be heel proof and suitable for wheel chairs, shopping trolleys and other small wheeled traffic. Frontrunner Entry can be used in combination with other products from the Frontrunner Entrance Flooring System range for a complete interior and exterior entrance matting solution.



BENEFITS

- Certified slip resistance **DIN 51130: R11** **ASTM 1677: 0.6/0.6**
- Excellent drainage **DIN 51130: V10**
- Fire resistant
- Easy to maintain
- Seamless, quick and easy installations
- Easy to cut on site, contours to uneven surfaces
- Heel and wheel-proof
- Enhanced branding on styling

FEATURES

- Diamond cut pattern
- Two layer open grid construction
- EN 13501 - 1 : 2007- Bfl - S1** **ASTM E648: Class I**
- Can be rolled up or lifted for cleaning
- Supplied in 10m (33') rolls - modules also available
- Made from flexible PVC
- Close mesh grid matting
- 5 standard grid colours

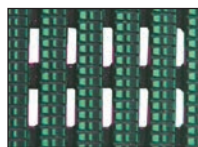
STANDARD COLOURS



DARK GREY



DARK BROWN



HOLLY GREEN



OXFORD BLUE



BLACK

Other colours available on request.

Frontrunner Entry Low Profile

A low profile 10.5mm (13/32") option that aligns with standard ceramic floor tiles and carpets in recessed applications. This can prevent the need for creating a deeper matwell in an existing subfloor in order to accommodate the entrance matting system.

STANDARD SIZES

| PRODUCT | HEIGHT | STANDARD ROLL OPTIONS | | | STANDARD MODULE OPTIONS* | | |
|-------------------|--------------------|-------------------------|--------------------------|---------------------------|--------------------------------|------------------------------|-----------------------------|
| Frontrunner Entry | 14mm (9/16") | 10 x 0.6m (33' x 2') | 10 x 0.91m (33' x 3') | 5 x 1.2m (16' 6" x 4') | 0.8 x 1.2m (2' 7" x 3' 11") | 1 x 1.5m (3' 3" x 4' 11") | 1.1 x 2m (3' 7" x 6' 7") |
| Low Profile | 10.5mm (13/32") | 10 x 0.6m (33' x 2') | 10 x 0.91m (33' x 3') | 5 x 1.2m (16' 6" x 4') | | | |

*Surface modules are supplied with factory fitted PVC ramped edging to four sides.

FRONTRUNNER XT

Extra slip resistant and heel-proof entrance matting

An entrance matting with a deeper etched tread for interior and exterior high traffic applications.

With all the features of Frontrunner Entry, Frontrunner XT has an extra aggressive, deep etched tread to give additional underfoot traction in outdoor applications and to remove the heaviest amounts of undershoe dirt and debris.

Frontrunner XT has therefore been successfully used where walkways and entrances are prone to becoming slippery and hazardous in wet conditions, and in particular on hardwood decking, bridges and general outdoor pedestrian areas.



BENEFITS

Certified slip resistance **DIN 51130: R12**

Excellent drainage **DIN 51130: V10**

Fire resistant

Easy to maintain

Seamless, quick and easy installations

Easy to cut on site, contours to uneven surfaces

Heel and wheel-proof

Enhanced branding or styling

FEATURES

Diamond cut pattern

Two layer open grid construction

EN 13501 - 1 : 2007- Bfl - S1

Can be rolled up or lifted for cleaning

Supplied in 10m (33') rolls

Made from flexible PVC

Close mesh grid matting

3 standard grid colours

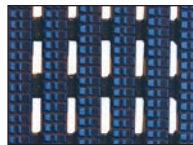
STANDARD COLOURS



DARK GREY



BLACK



OXFORD BLUE

STANDARD SIZES

| PRODUCT | HEIGHT | STANDARD ROLL OPTIONS* | | |
|----------------|-----------------|-------------------------|--------------------------|--------------------------|
| Frontrunner XT | 14mm (9/16") | 10 x 0.6m (33' x 2') | 10 x 0.91m (33' x 3') | 5 x 1.2m (16'6" x 4') |

*To ensure maximum flexibility and convenience, Frontrunner entrance matting system can be delivered in rolls or cut to size.



FRONTRUNNER BRUSH

Slip resistant entrance matting with brush inserts

For maximum moisture and dirt removal in external areas.

The brush strips with bristles will scour snow, mud and other heavy contaminants from the shoe, boot or wheel, helping to keep dirt from entering buildings, even under the most extreme weather conditions.

Frontrunner Brush works as a 'stand alone' module or in combination with other Frontrunner Entrance Flooring Systems.



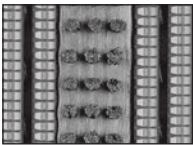
BENEFITS

- High soil removal and slip resistance
- Excellent drainage
- Excellent scraping
- Fire resistant
- Easy to maintain
- Seamless, quick and easy installations
- Easy to cut on site, contours to uneven surfaces

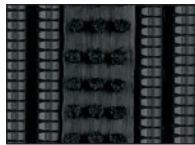
FEATURES

- Diamond cut pattern
- Two layer open grid construction
- Nylon brush inserts
- EN 13501 - 1 : 2007- Cl1 - S2
- Can be rolled up or lifted for cleaning
- Supplied in 10m (33') rolls - modules also available
- Made from flexible PVC

STANDARD COLOURS



DARK GREY



BLACK



STANDARD SIZES

| PRODUCT | HEIGHT | STANDARD ROLL OPTIONS* | | | STANDARD MODULE OPTIONS** | | |
|-------------------|---------------------------|-------------------------|--------------------------|---------------------------|------------------------------|----------------------------|---------------------------|
| Frontrunner Brush | 14-19mm (9/16" - 3/4") | 10 x 0.6m (33' x 2') | 10 x 0.91m (33' x 3') | 5 x 1.2m (16' 6" x 4') | 0.8 x 1.2m (2'7" x 3'11") | 1 x 1.5m (3'3" x 4'11") | 1.1 x 2m (3'7" x 6'7") |

*Contact us for bespoke dimensions.

**Surface modules are supplied with factory fitted PVC ramped edging to four sides.

FRONTRUNNER BRUSH WIDE

Extra wide grid matting with brush inserts

For large debris removal in external areas.

Icy and snowy winter months can be characterised by a lot of gravel, shingle or stones.

With similar properties to Frontrunner Brush, but with a wider grid that allows larger debris such as small stones, ice and snow to fall through and be contained.

It works either as a stand alone or can be interchanged with another Frontrunner system in summer months to provide the complete entrance solution.



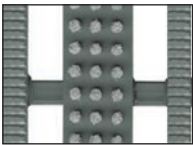
BENEFITS

- Ideal for removing salt, shingle or gravel
- High soil removal and slip resistance
- Excellent drainage
- Excellent scraping
- Fire resistant
- Easy to maintain
- Seamless, quick and easy installations
- Easy to cut on site, contours to uneven surfaces

FEATURES

- Extra wide grid
- Diamond cut pattern
- Two layer open grid construction
- Nylon brush inserts
- EN 13501 - 1 : 2007- Cl1 - S1
- Can be rolled up or lifted for cleaning
- Supplied in 10m (33') rolls - modules also available
- Made from flexible PVC

STANDARD COLOURS



DARK GREY



BLACK



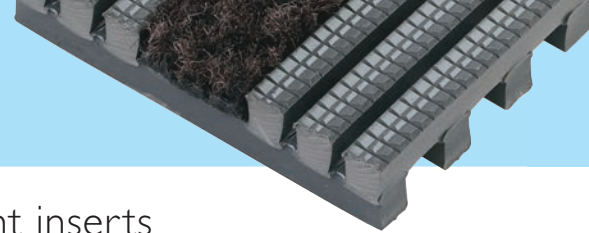
STANDARD SIZES

| PRODUCT | HEIGHT | STANDARD ROLL OPTIONS* | | | STANDARD MODULE OPTIONS** | | |
|------------------------|---------------------------|------------------------|-------------------------|--------------------------|---------------------------|------------------------------|-----------------------------|
| Frontrunner Brush Wide | 14-19mm (9/16" - 3/4") | 10 x 0.6m (33' x 2) | 10 x 0.91m (33' x 3) | 5 x 1.2m (16' 6" x 4) | 0.8 x 1.2m (2' 7" x 4) | 1 x 1.5m (3' 3" x 4' 11") | 1.1 x 2m (3' 7" x 6' 7") |

*Contact us for bespoke dimensions.

**Surface modules are supplied with factory fitted PVC ramped edging to four sides.

FRONTRUNNER PLUS



Open grid entrance matting with absorbent inserts

Maximum removal of residual dirt and moisture in high traffic internal areas.

Protects your internal floorings and reduces cleaning costs.

Frontrunner Plus, available in two heights, is an open grid vinyl construction is not only heel-proof and wheelchair friendly, but also effectively removes, retains and dries soil and moisture from underfoot thanks to its slip resistant surface and absorbent inserts. The positioning of the scraper bars on Frontrunner Entrance Flooring System can be varied to allow the incorporation of a logo panel. The system is of one-piece vinyl construction and is therefore both quiet underfoot and ideal for use in conjunction with under floor and upright loss prevention systems.



BENEFITS

- High soil removal & slip resistance
- Excellent drainage
- Maximum moisture removal
- Fire resistant
- Easy to maintain
- Seamless, quick and easy installations
- Easy to cut on site, contours to uneven surfaces
- Heel and wheel-proof
- Reduces the need of a deeper matwell
- Enhanced branding or styling

FEATURES

- Diamond cut pattern
- Two layer open grid construction
- Absorbent inserts
- Certified EN 13501 - 1 : 2007- Cl1 - S2 ASTM E648 : Class I
- Can be rolled up or lifted for cleaning
- Supplied in 10m (33') rolls - modules also available
- Made from flexible PVC
- Close mesh grid matting
- Available in a low profile 10.5mm (13/32") option
- Up to 50 different colour combinations available

STANDARD COLOURS

For grid colours and carpet colour combinations please see pages 12-13.

STANDARD SIZES

| PRODUCT | HEIGHT | STANDARD ROLL OPTIONS* | | | STANDARD MODULE OPTIONS** | | |
|------------------|--------------------------------|-------------------------|--------------------------|--------------------------|------------------------------|----------------------------|---------------------------|
| | | 10 x 0.6m (33' x 2') | 10 x 0.91m (33' x 3') | 5 x 1.2m (16'6" x 4') | 0.8 x 1.2m (2'7" x 3'11") | 1 x 1.5m (3'3" x 4'11") | 1.1 x 2m (3'7" x 6'7") |
| Frontrunner Plus | 14 - 16mm (9/16" - 5/8") | | | | | | |
| Low Profile | 10.5 - 12mm (13/32" - 1/2") | | | | | | |

*Contact us for bespoke dimensions.
**Surface modules are supplied with factory fitted PVC ramped edging to four sides.

Frontrunner Plus Low Profile

A low profile 10mm (13/32") option that aligns with standard ceramic floor tiles and carpets in recessed applications without the need to create a deeper matwell in an existing subfloor.

CUSTOM LOGOS

The positioning of the scraper bars on Fronrunner Entrance Flooring Systems can be varied to allow the incorporation of a logo panel.

Logo panels are achieved by die cutting with another compatible high quality absorbent insert, giving a permanent and colourfast message.

Logo panels run the width of the matwell and are either 30 or 45cm tall, providing a highly visible message in the all important 'first impression' area.

Fronrunner Entrance Systems incorporating logos can be supplied for recessed systems or surface mounted modular mats.



DESIGN COMBINATIONS

Frontrunner Plus is available in a choice of 5 grid colours and 10 coordinating absorbent insert colours. Shown below is each absorbent insert swatch with the most popular grid choice and the 5 alternative grid colours available.

ALTERNATIVE
GRID COLOURS:



Dark Grey

Dark Brown



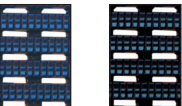
Holly Green

Black



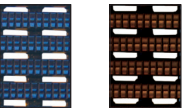
Dark Grey

Dark Brown



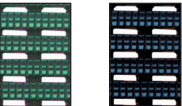
Oxford Blue

Black



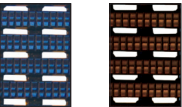
Oxford Blue

Dark Brown



Holly Green

Black



Oxford Blue

Dark Brown



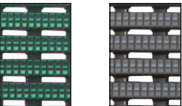
Holly Green

Black



Oxford Blue

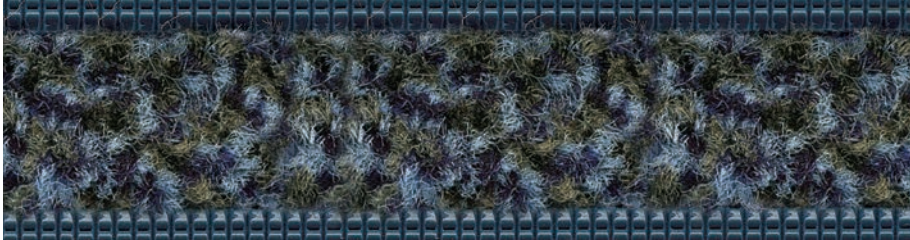
Dark Brown



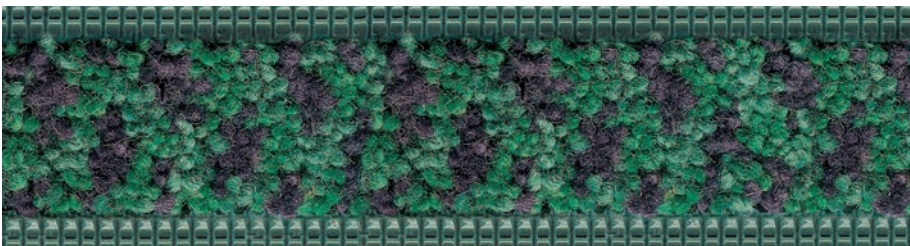
Holly Green

Dark Grey

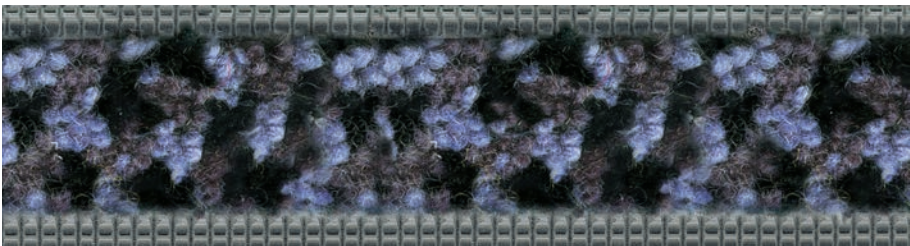
INSERT: **BASALT**
GRID SHOWN: **OXFORD BLUE**



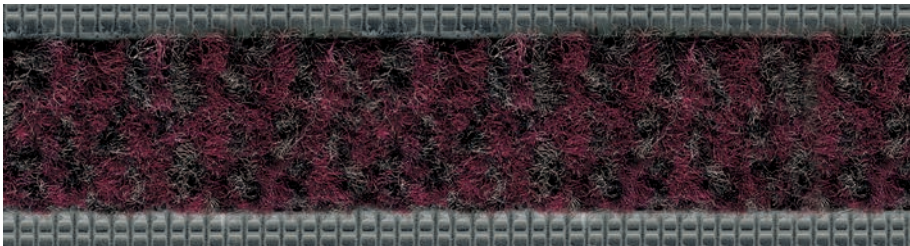
INSERT: **80/20+ GREEN***
GRID SHOWN: **HOLLY GREEN**



INSERT: **80/20+ GREY***
GRID SHOWN: **DARK GREY**



INSERT: **SANDSTONE**
GRID SHOWN: **DARK GREY**



INSERT: **SLATE**
GRID SHOWN: **BLACK**



* 80% wool, 20% nylon and nylon monofilament scrapers.

This provides a combination of 50 differing colourways designed to create the optimum choice for today's interior designer and specifier alike. (See www.plastexmatting.com/frontrunner-plus.html for full specifications).

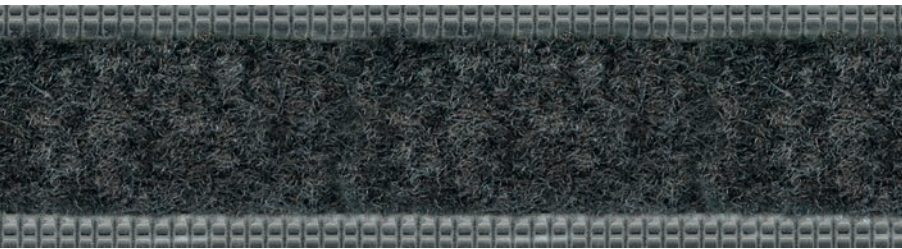
INSERT: 602
GRID SHOWN: OXFORD BLUE



INSERT: 605
GRID SHOWN: DARK BROWN



INSERT: 606
GRID SHOWN: DARK GREY



INSERT: 607
GRID SHOWN: BLACK



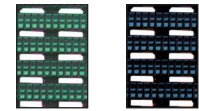
INSERT: 608
GRID SHOWN: BLACK



ALTERNATIVE
GRID COLOURS:



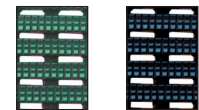
Dark Grey Dark Brown



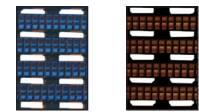
Holly Green Black



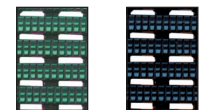
Dark Grey Oxford Blue



Holly Green Black



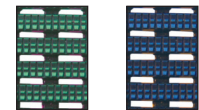
Oxford Blue Dark Brown



Holly Green Black



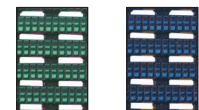
Dark Grey Dark Brown



Holly Green Oxford Blue



Dark Grey Dark Brown



Holly Green Oxford Blue

FRONTRUNNER SB

Vinyl ribbed, solid backed entrance matting

Laid directly on top of sub-floor, Fronrunner SB, being 6.5mm thick, removes the need for a matwell and fits easily within existing floor coverings or surrounded by carpet tiles.

Fronrunner SB's ribbed pattern scrapes dirt at the entrance area, which is effectively contained away from the traffic area. The solid backing and ribbed construction enable quick and effective vacuuming.

Fronrunner SB can also be used on top of current flooring with ramped edging to provide a slip resistant walkway.



BENEFITS

- Certified slip resistance **DIN 51130: R11** **ASTM C1028: 0.6/0.6**
- Fire resistant
- Surface mounted
- Can be adhered to sub-floor in high traffic areas
- Easy to cut on site, contours to uneven surfaces
- Seamless, quick and easy installations
- Light to handle
- Heel and wheel-proof
- Rolling resistance

FEATURES

- Etched pattern
- Certified **EN 13501 - I : 2007- Cfl - S1** **ASTM E648: Class 2**
- 6.5mm (17/64") grid height
- Solid backing
- Made from flexible PVC
- Supplied in 10m (33') and 20m (66') rolls
- One layer hollow construction
- Close mesh grid matting
- ASTM F2753:** No apparent damage to the vinyl portion of the system after 1,000 cycles at 500lbs

STANDARD COLOURS



BLACK



GREY



STANDARD SIZES

| PRODUCT | HEIGHT | STANDARD ROLL OPTIONS | |
|---------------|-------------------|-------------------------|-------------------------|
| Fronrunner SB | 6.5mm (17/64") | 10 x 1m (33' x 3'3") | 20 x 1m (66' x 3'3") |

FRONTRUNNER SB+

Vinyl ribbed, solid backed entrance matting with carpet inserts

Without the need of a recessed matwell, Frontrunner SB+ cleans, scrapes and dries dirt and moisture at the entrance.

In addition to Frontrunner SB's ribbed pattern that scrapes dirt off shoes and solid back for containment of dirt, Frontrunner SB+ has added absorbent inserts with monofilament scrapers to remove moisture at the entrance.

Featuring a grid of 6.5mm thickness, Frontrunner SB+ can either be laid directly on top of sub-floor or be used on top of current flooring with ramped edging.



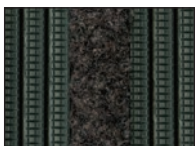
BENEFITS

- Certified slip resistance **DIN 51130: R11** **ASTM 1677: 0.6/0.6**
- Maximum moisture removal
- Fire resistant
- Surface mounted
- Can be adhered to sub-floor in high traffic areas
- Easy to cut on site, contours to uneven surfaces
- Seamless, quick and easy installations
- Light to handle
- Heel and wheel-proof
- Rolling resistance

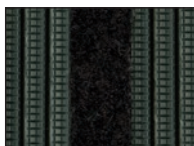
FEATURES

- Etched pattern
- Absorbent inserts with monofilament scrapers
- EN 13501 - I : 2007- Cf1 - SI** **ASTM E648: Class 2**
- 6.5mm (1/4") grid height
- Solid backing
- Made from flexible PVC
- Supplied in 10m (33') and 20m (66') rolls or modules
- One layer hollow construction
- Close mesh grid matting
- ASTM F2753: 0.080in** lost of thickness after 1,000 cycles at 500lbs

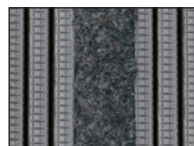
STANDARD COLOURS



BLACK WITH 607 INSERT



BLACK WITH 608 INSERT



GREY WITH 606 INSERT



GREY WITH 607 INSERT



STANDARD SIZES

| PRODUCT | HEIGHT | STANDARD ROLL OPTIONS | | STANDARD MODULE OPTION* |
|-----------------|--------------------------|-------------------------|-------------------------|----------------------------|
| Frontrunner SB+ | 6.5/8mm (17/64-5/16") | 10 x 1m (33' x 3'3") | 20 x 1m (66' x 3'3") | 1 x 1.5m (3'3" x 4'11") |

*Surface modules are supplied with factory fitted PVC ramped edging to four sides.

FRONTRUNNER ENTRANCE

Frontrunner modules can be positioned in minutes and are available in three standard sizes as shown below, in a range of colours with factory fitted ramped edging to four sides.



Frontrunner Entry



Frontrunner Brush



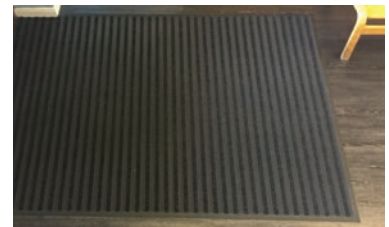
Frontrunner Brush Wide



Frontrunner Plus



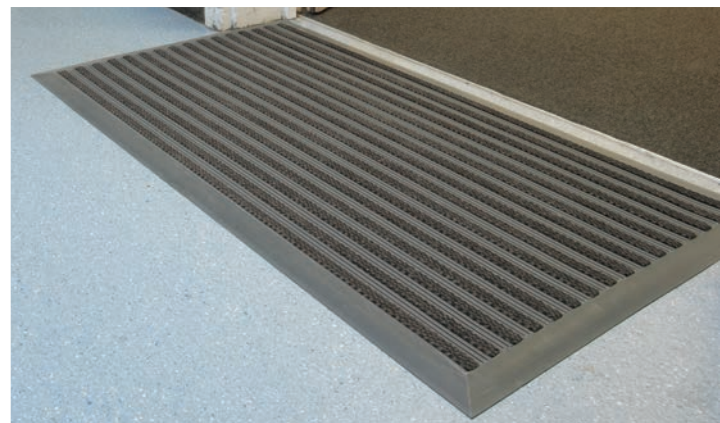
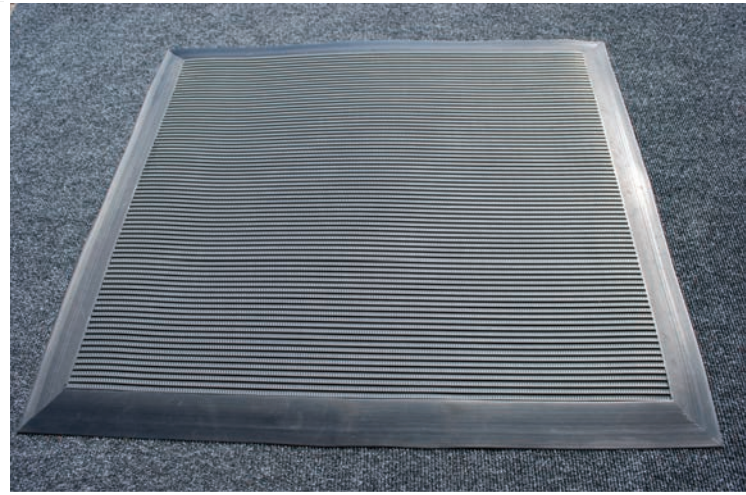
Frontrunner Plus



Frontrunner SB+

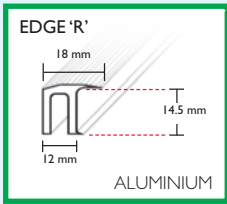
| PRODUCT | HEIGHT | STANDARD MODULE OPTIONS | | |
|------------------------|-----------------|---------------------------|-------------------------------|------------------------------|
| Frontrunner Entry | 14mm (9/16") | 80 x 120cm (2'7" x 4') | 100 x 150cm (3'3" x 4'11") | 110 x 200cm (3'7" x 6'7") |
| Frontrunner Brush | 19mm (3/4") | 80 x 120cm (2'7" x 4') | 100 x 150cm (3'3" x 4'11") | 110 x 200cm (3'7" x 6'7") |
| Frontrunner Brush Wide | 19mm (3/4") | 80 x 120cm (2'7" x 4') | 100 x 150cm (3'3" x 4'11") | 110 x 200cm (3'7" x 6'7") |
| Frontrunner Plus | 16mm (5/8") | 80 x 120cm (2'7" x 4') | 100 x 150cm (3'3" x 4'11") | 110 x 200cm (3'7" x 6'7") |
| Frontrunner SB+ | 8mm (5/16") | | 100 x 150cm (3'3" x 4'11") | |

FLOORING SURFACE MODULES

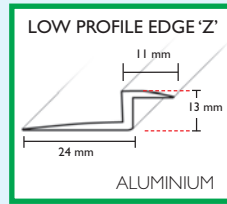


Recessed Ancillaries

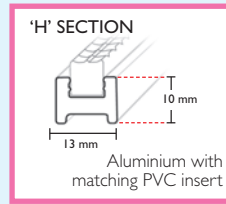
For recessed applications, a full range of frames and dividers are purposely designed to provide level and smooth transitions, and simple installations during actual entrance fit out. For full details visit www.plastexamting.com/recessed-ancillaries.html



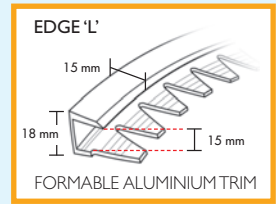
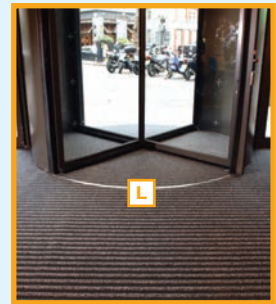
For left and right extremities of well to cap and secure ends of 14mm/10.5mm matting.



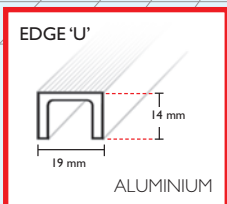
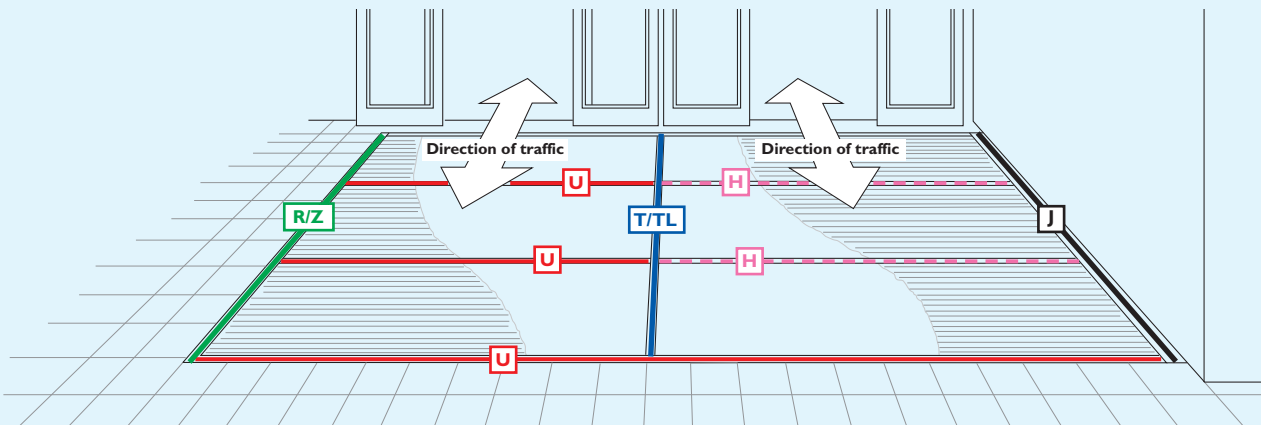
Used for left and right extremities of 10.5mm matting in conjunction with ceramic tiles.



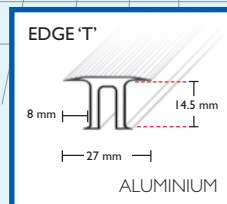
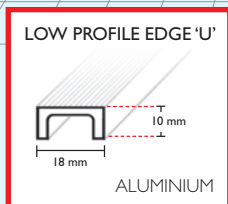
Used as "an invisible divider" for front to back installations of 14mm/10.5mm matting.



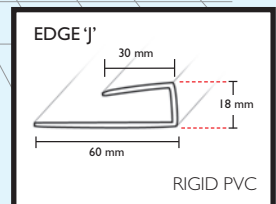
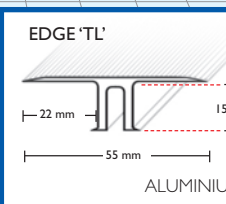
For circular door and non-rectangular installations of 14mm matting.



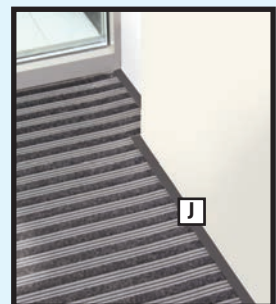
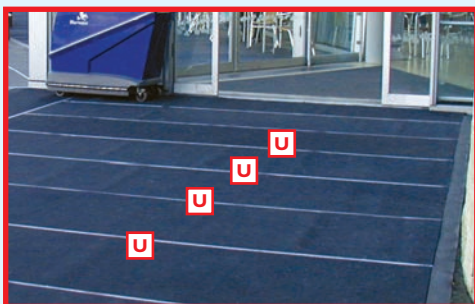
A front to back frame or divider used with 14mm/10.5mm matting.



Frames of different widths used as dividers for large left to right installations of 14mm matting.



For left and right extremities of well to cap and secure ends of 14mm matting when against a wall.



Aluminium frames are available in natural anodised finish. For design elegance and colour continuity, the U, R and T frames are also available in Dark Grey and Black. Edge J, in rigid PVC, is available in Dark Grey or Black.

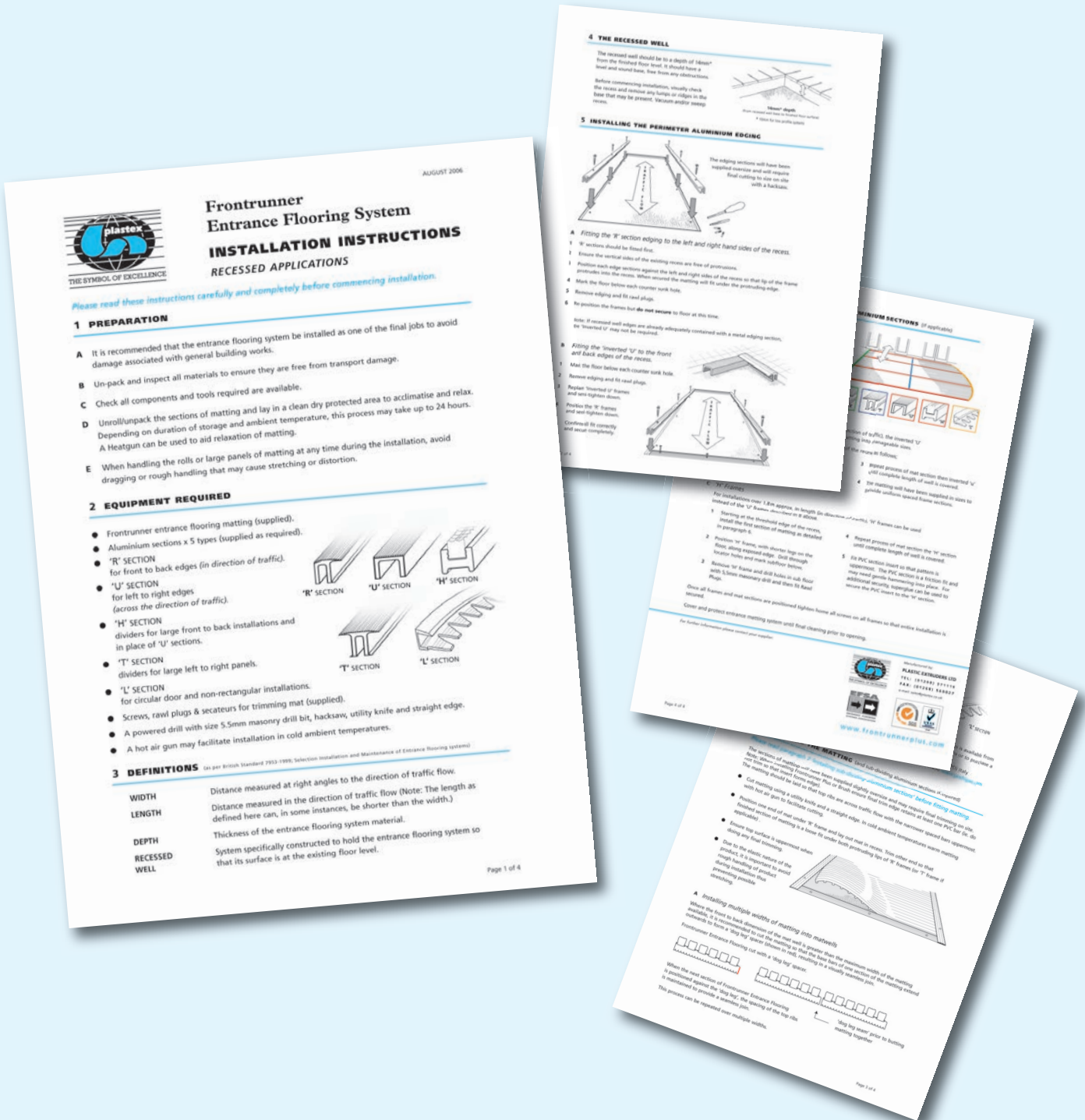
Recessed Installation Instructions

No advance templating is required - cut on site, save time and money

The Fronrunner Entrance Flooring System uses a simple but effective framing method, which is installed at the same time as the entrance flooring. As the system is supplied in rolls, the installation is quick and easy and does not require any advance templating. Additional visits to site for fitting the matwell frame when the floor slab is poured are also not required.

A range of frames are utilised where large areas of matting are to be installed. The frames are used to divide, cap and secure ends or form shaped edges where required (see page 18).

The simplicity of the Fronrunner Entrance Flooring System allows it to be installed by flooring professionals nationwide. Easy to follow instructions are included with each delivery.



Entrance matting surface mounted ancillaries

Fronrunner Entry & Fronrunner Plus



14mm x 60mm x 10.1m
(9/16" x 2 1/2" x 33')

60mm PVC edging strip

Supplied in rolls of 10.1m (33') length with cold welding paste.

Colours: Black, Dark Grey



14mm x 100mm x 10.1m
(9/16" x 3 3/4" x 33')

100mm PVC edging strip

Supplied in rolls of 10.1m (33') length with cold welding paste.

Colours: Black, Dark Grey, Yellow

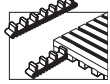


15mm x 45mm x 2m
(5/8" x 1 13/16" x 6'6")

45mm Aluminium edging strip

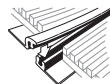
Supplied in sections of 2m (6'6") length with fixing screws and plugs.

Colours: Anodised Aluminium, Powder Coated Yellow



Connector clips - side to side

For joining sections of matting side to side. Supplied in packs of 10.



14mm x 2.5m
(9/16" x 8'2")

Snap Track

2 part snap track can be welded to join rolls end to end or side to side for large area covering.

Supplied with cold welding paste.

Colour: Dark Grey

Fronrunner Entry Low Profile

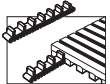


10mm x 50mm x 10.1m
(3/8" x 2" x 33')

50mm PVC edging strip

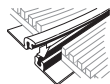
Supplied in rolls of 10.1m (33') length with cold welding paste.

Colours: Black, Dark Grey



Connector clips - side to side

For joining sections of matting side to side. Supplied in packs of 10.



10.5mm x 1.8m
(13/32" x 5'11")

Snap Track - Low Profile

2 part low profile snap track can be welded to join rolls end to end or side to side for large area covering.

Supplied with cold welding paste.

Fronrunner Plus Low Profile

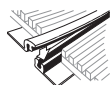


10mm x 50mm x 10.1m
(3/8" x 2" x 33')

50mm PVC edging strip

Supplied in rolls of 10.1m (33') length with cold welding paste.

Colours: Black, Dark Grey



10.5mm x 1.8m
(13/32" x 5'11")

Snap Track - Low Profile

2 part low profile snap track can be welded to join rolls end to end or side to side for large area covering.

Supplied with cold welding paste.

Colour: Dark Grey

Fronrunner Brush & Fronrunner Brush Wide



14mm x 60mm x 10.1m
(9/16" x 2 1/2" x 33')

60mm PVC edging strip

Supplied in rolls of 10.1m (33') length with cold welding paste.

Colours: Black, Dark Grey



14mm x 100mm x 10.1m
(9/16" x 3 3/4" x 33')

100mm PVC edging strip

Supplied in rolls of 10.1m (33') length with cold welding paste.

Colours: Black, Dark Grey, Yellow



15mm x 45mm x 2m
(5/8" x 1 13/16" x 6'6")

45mm Aluminium edging strip

Supplied in sections of 2m (6'6") length with fixing screws and plugs.

Colours: Anodised Aluminium, Powder Coated Yellow



14mm x 2.5m
(9/16" x 8'2")

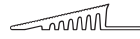
Snap Track

2 part snap track can be welded to join rolls end to end or side to side for large area covering.

Supplied with welding paste.

Colour: Dark Grey

Fronrunner XT



14mm x 60mm x 10.1m
(9/16" x 2 1/2" x 33')

60mm PVC edging strip

Supplied in rolls of 10.1m (33') length with cold welding paste.

Colours: Black, Dark Grey

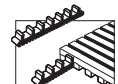


15mm x 45mm x 2m
(5/8" x 1 13/16" x 6'6")

45mm Aluminium edging strip

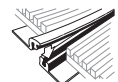
Supplied in sections of 2m (6'6") length with fixing screws and plugs.

Colours: Anodised Aluminium, Powder Coated Yellow



Connector clips - side to side

For joining sections of matting side to side. Supplied in packs of 10.



14mm x 2.5m
(9/16" x 8'2")

Snap Track

2 part snap track can be welded to join rolls end to end or side to side for large area covering.

Supplied with cold welding paste.

Colour: Dark Grey

Fronrunner SB & Fronrunner SB+



6.5mm x 30mm x 60m
(1/4" x 1" x 197')

30mm PVC edging strip

Supplied in rolls of 60m (197') length with cold welding paste.

Colours: Black, Dark Grey



3.5mm x 3.6m
(1/8" x 11'9")

T Joining Strip

1 part strip can be welded to join rolls end to end or side to side for larger area covering.

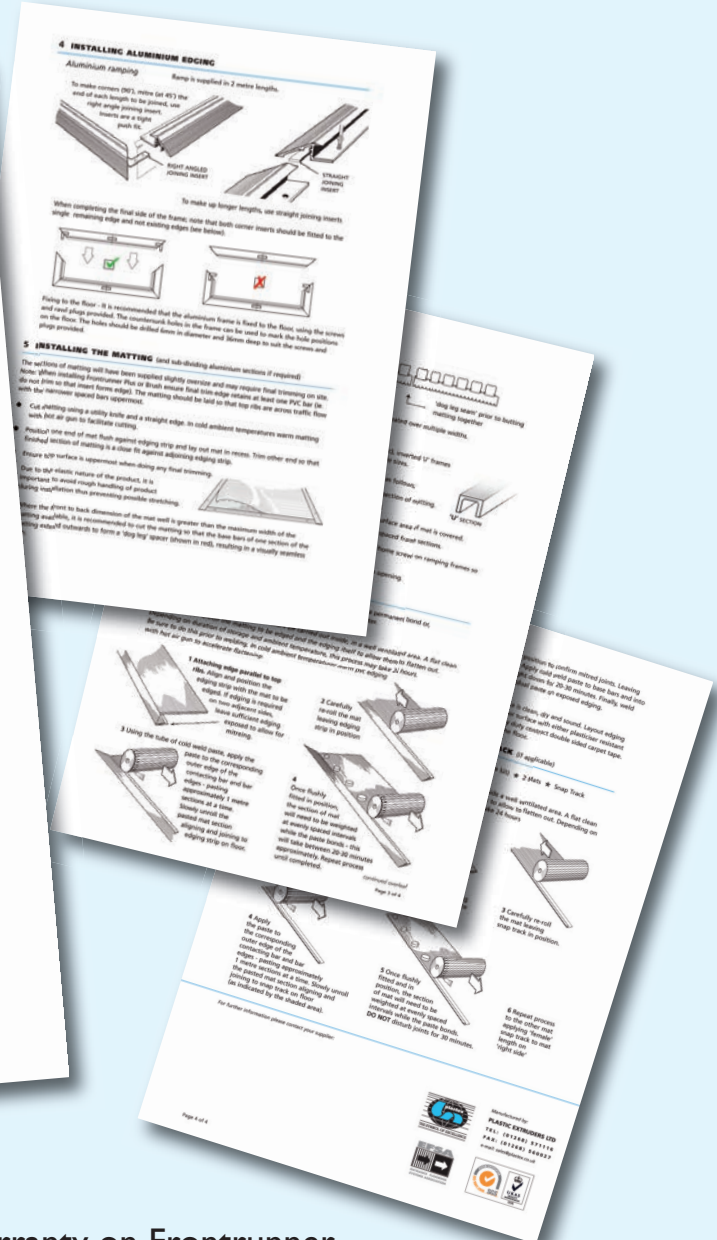
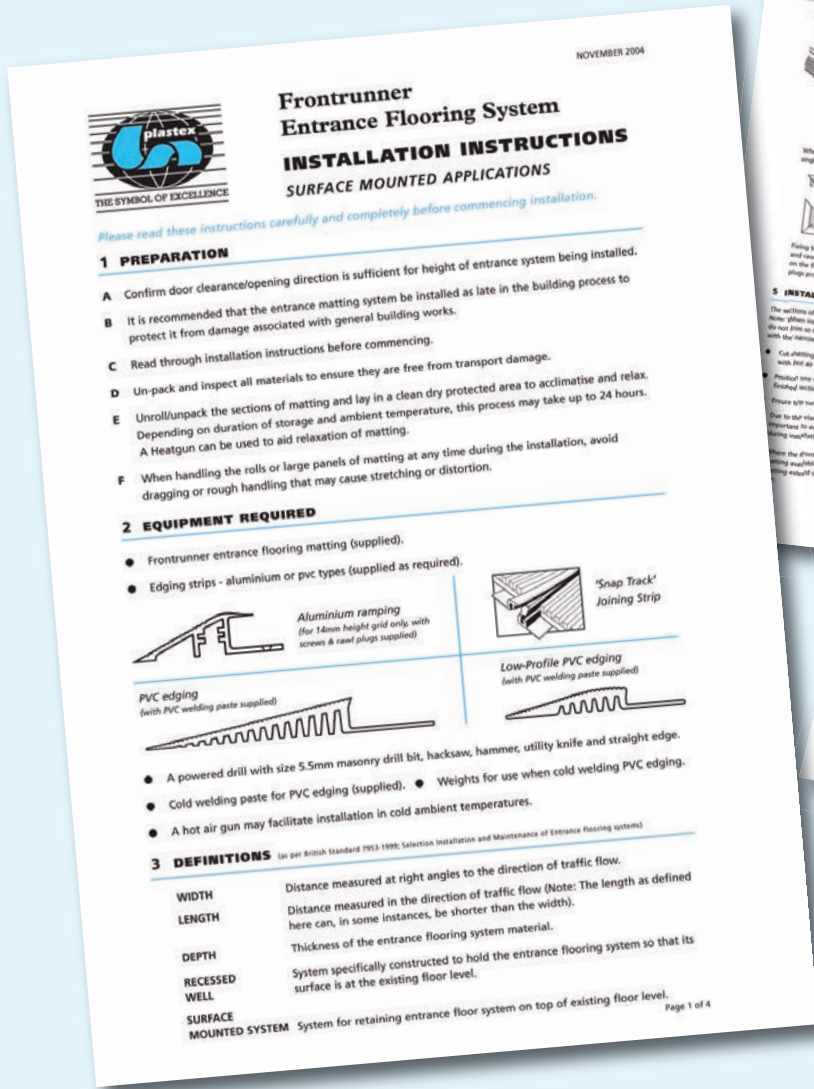
Colour: Black

Surface Mounted Installation Instructions

Easy to follow instructions

Fitting PVC or aluminium ramped ancillaries and connector clips is quick and simple.

Instructions are included with each delivery.



Cleaning Guidance

Frontrunner is also very easy to clean within normal cleaning schedules and doesn't require any specialised cleaning products.

Full cleaning instructions come with Frontrunner when delivered or are available at www.plastexmatting.com/frontrunner-cleaning.html

Warranty on Frontrunner Entrance Flooring Systems

Frontrunner entrance flooring systems are very durable and many of the installations shown in this brochure have been in place for over ten years and are still performing with admirable style and service. This applies to large retail centres with all the heavy footfall traffic, where we confidently offer a 2-4 year warranty on all of the Frontrunner range.

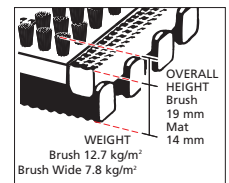
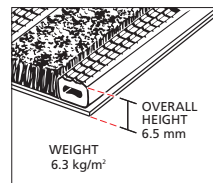
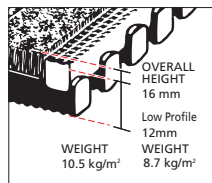
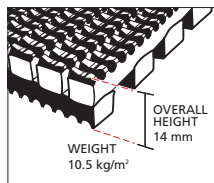
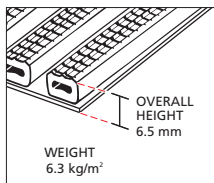
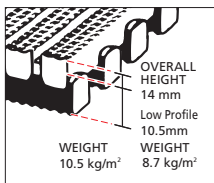
Full warranty statement:
www.plastexmatting.com/warranty-policy.html

FRONTRUNNER ENTRANCE FLOORING

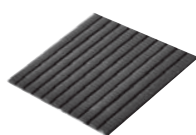
SIZES & WEIGHTS

(all dimensions are nominal)

| PRODUCT | LENGTH (m) | HEIGHT (mm) | WIDTHS (cm) | | WEIGHT (kg/m ²) |
|--------------------------------|------------|-------------|-------------|-----|-----------------------------|
| Rolls | | | | | |
| | Tolerances | 0 + 0.3 | +/- 0.5 | | +/- 1 |
| Fronrunner Brush | 10 | 14/19 | 60 | 91 | 12.7 |
| Fronrunner Brush | 5 | 14/19 | | 120 | 12.7 |
| Fronrunner Brush Wide | 10 | 14/19 | 60 | 91 | 7.8 |
| Fronrunner Brush Wide | 5 | 14/19 | | 120 | 7.8 |
| Fronrunner Entry or XT | 10 | 14 | 60 | 91 | 10.5 |
| Fronrunner Entry or XT | 5 | 14 | | 120 | 10.5 |
| Fronrunner Entry - Low Profile | 10 | 10.5 | 60 | 91 | 8.7 |
| Fronrunner Entry - Low Profile | 5 | 10.5 | | 120 | 8.7 |
| Fronrunner Plus | 10 | 14/16 | 60 | 91 | 10.5 |
| Fronrunner Plus | 5 | 14/16 | | 120 | 10.5 |
| Fronrunner Plus - Low Profile | 10 | 10.5/12 | 60 | 91 | 8.7 |
| Fronrunner Plus - Low Profile | 5 | 10.5/12 | | 120 | 8.7 |
| Fronrunner SB | 10 | 6.5 | | 100 | 6.3 |
| Fronrunner SB | 20 | 6.5 | | 100 | 6.3 |
| Fronrunner SB+ | 10 | 6.5/8 | | 100 | 6.3 |
| Fronrunner SB+ | 20 | 6.5/8 | | 100 | 6.3 |



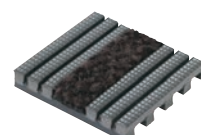
Fronrunner Entry



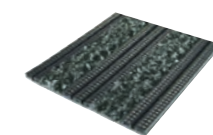
Fronrunner SB



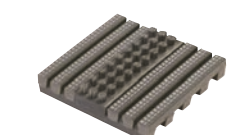
Fronrunner XT



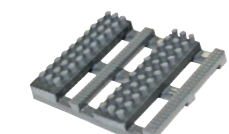
Fronrunner Plus



Fronrunner SB+



Fronrunner Brush



Fronrunner Brush Wide

GENERAL SPECIFICATION

APPEARANCES

Fronrunner Entry and Fronrunner XT: Open grid "heel-proof" design.

Fronrunner Plus: Open grid "heel-proof" design with absorbent inserts.

Fronrunner Brush: Open grid "heel-proof" design with nylon brush inserts.

Fronrunner Brush Wide: Wide spaced open grid design with nylon brush inserts.

Fronrunner SB: Open ribbed "heel-proof" design on vinyl sheet.

Fronrunner SB+: Open ribbed "heel-proof" design with Excellence absorbent inserts on vinyl sheet.

COLOURS

Black, Dark Grey, Dark Brown, Holly Green and Oxford Blue homogenous stable colours.

Absorbent Inserts: 10 colour choices. See pages 12-13 or visit www.plastexmatting.com/fronrunner-plus.html

DURABILITY

One piece welded construction for maintenance free life.

INSTALLATION

Recessed wells:

www.plastexmatting.com/uploads/4/4/0/0/44003899/fronrunner-installation-guide-recessed-applications.pdf

Surface mounted applications:

www.plastexmatting.com/uploads/4/4/0/0/44003899/fronrunner-installation-guide-surface-mounted-applications.pdf

Fronrunner SB and Fronrunner SB+

www.plastexmatting.com/uploads/4/4/0/0/44003899/fronrunner-sb-sb-plus-installation-instructions.pdf

WORKABILITY

Flexible construction is easy to trim and shape on site.

Supplied in rolls with top ribs facing outwards. Requires inverting once rolled out prior to use..

USES

Entrance Flooring Systems for Retail, Hospitality, Offices, Restaurants, Leisure, Industrial, Education, High traffic areas etc.

SYSTEM PRODUCT DATA SHEET

TECHNICAL DATA

| | |
|--------------------|--|
| ACOUSTIC | Excellent sound absorption properties. |
| CHEMICAL | Resistant to most acids, alkalines and oils. For specific chemical resistances, see www.plastexmatting.com/the-chemical-resistance-of-PVC.html |
| COMPOSITION | Flexible DINP plasticised Polyvinyl Chloride (PVC). |

Absorbent Inserts: see below

| | Green & Grey 80/20+ | Basalt & Slate | Sandstone | 602, 605, 606, 607, 608 |
|----------------------|--|-------------------------------|-------------------------------|-----------------------------|
| Construction | Twist Pile | Cut Pile | Cut Pile | Tufted, Cut Pile |
| Pile Content | 80% wool, 20% nylon & nylon monofilament | 100% nylon | 100% nylon | 100% nylon |
| Pile Weight | 1,450 g/m ² ± 5% | 1,000 g/m ² ± 5% | 1,000 g/m ² ± 5% | 1,080 g/m ² ± 5% |
| Pile Height | ± 6 mm | ± 7 mm (Basalt) | ± 6 mm | ± 6.5 mm |
| Total Insert Weight* | 4,700 g/m ² ± 5% | 3,900 g/m ² approx | | 4,260 g/m ² ± 5% |
| Total Insert Height* | ± 8 mm approx | ± 10 mm (Basalt) | ± 8 mm | ± 9.7 mm |
| Primary Backing | Non-woven Polyester | Non-woven Polyester | Non-woven Polyester | Non-woven Polyester |
| Secondary Backing | PVC incorporating stabilisers | PVC incorporating stabilisers | PVC incorporating stabilisers | Vinyl compound |
| Flammability | | BS 4790 1972 - NBN S 21-203 | | EN 13501 - I Cf1 S1 |

* Insert carpet & backing.

Nylon Brush Inserts: see below

| | | | | | |
|-----------------|-------------------------|------------------|--------|------------------|-------|
| Construction | Aligned Tufting | Bristle Diameter | 0.3 mm | Insert Thickness | 12 mm |
| Bristle Content | Nylon 6.6 Monofilaments | Bristle Height | 4.5 mm | Backing | PVC |

ENVIRONMENT Plastex does not use any substances currently included in the SVHC (Substances of Very High Concern) list under R.E.A.C.H.* in any matting product. All PVC grid products are 100% recyclable.
* Registration, Evaluation, Authorisation and restriction of Chemical substances.

FIRE

| | |
|---|---------------------|
| Fronrunner Brush: EN ISO 13501-1:2007-Cfl-S2 | |
| Fronrunner Entry & Fronrunner XT: Flame retardant grade - EN ISO 13501-1:2007-Bfl-S1 | ASTM E648 - Class 1 |
| Fronrunner Plus: EN ISO 13501-1:2007-Cfl-S2 | ASTM E648 - Class 1 |
| Fronrunner Plus Low Profile: EN ISO 13501-1:2007-Cfl-S2 | |
| Fronrunner SB and Fronrunner SB+: EN ISO 13501-1:2007-Cfl-S1 | ASTM E648 - Class 2 |
| Absorbent Inserts: see above | |
| Nylon Brush fibres: UL94 - V2 | |

ROLLING RESISTANCE ASTM F 2753: 227 kg (500 lbs) per wheel. Result: After 1,000 passes, 0.080in lost of thickness*
*Product used for the test was the lightest within the range, Fronrunner SB+

REVERSION Thermoplastic shrinkage can result in size reductions up to 2%. Accelerated in hot environments. Refer to www.plastexmatting.com/dimensional-stability-of-vinyl-matting.html

| | | | |
|------------------------|-------------------------|------------------------------------|----------|
| SLIP RESISTANCE | DIN 51130: | Fronrunner XT | R12, V10 |
| | | Fronrunner Entry / SB / SB+ | R11, V10 |
| | ASTM F 1677 - Dry/Wet: | Fronrunner Entry | 0.6/0.6 |
| | ASTM F C1028 - Dry/Wet: | Fronrunner SB | 0.6/0.6 |

THERMAL Functional -23°C +60°C (slight size variation may occur at temperature extremes).

UV LIGHT Resistant to PVC degradation, uncoloured PVC material - BS EN 607 = Delta E 1.02.

WARRANTY

| | |
|--|--|
| Fronrunner Entry & Fronrunner XT: 4 Years | www.plastexmatting.com/warranty-policy.html |
| Fronrunner Plus, Fronrunner SB & Fronrunner SB+: 3 Years | |
| Fronrunner Brush, Fronrunner Brush Wide, | |
| Fronrunner Entry Low profile & Fronrunner Plus Low profile: 2 Years | |

Specifications are updated with new regulations/international certification. Please refer to www.plastexmatting.com for latest information.

We make our matting, and that makes all the difference

When you buy Plastex matting you're also buying our extensive know-how that comes from over 55 years of designing, testing and manufacturing matting solutions for a diverse range of applications; knowledge we apply to make sure we find exactly the right solution for you.

This is important as an incorrectly specified product may actually increase risk. For example using a mat designed for bare feet in a workplace area could potentially increase slip accidents. That's why simply picking a product from a web page may not deliver the correct solution.

Talk to Us

To make sure you get the right mat for the right reasons, talk to us and our distributors.



The 45+ products within the Plastex range of matting and flooring offer **"a mat for all reasons"**.

To make it easier for you to choose the right mat for the right reason, we've divided our range into the sections below. Simply pick the section that best suits your need, and then use the segmentation chart you'll find at the front of each section to help you make your final choice.



Fronrunner Entrance Flooring System

Product Index

| | |
|-------------------------------------|-------|
| Fronrunner Entry | 6 |
| Fronrunner SB | 14 |
| Fronrunner XT | 7 |
| Fronrunner Brush | 8 |
| Fronrunner Brush Wide | 9 |
| Fronrunner Plus | 10 |
| Fronrunner Plus Design Combinations | 12-13 |
| Fronrunner Plus Custom Logos | 11 |
| Fronrunner SB+ | 15 |

Full Manufacturer Warranty - Another good reason to choose Plastex

All Plastex flooring and matting products will give excellent and long service. In the unlikely event that a Plastex product has a defect in workmanship, we offer a full refund or replacement warranty. The warranty periods vary depending on the product, you can find full terms and details at www.plastexmatting.com/warranty-policy.html



www.plastexmatting.com

Plastic Extruders Ltd.

Russell Gardens, Wickford,
Essex SS11 8DN, England

Tel: +44 (0) 1268 571116

Plastex Matting, Inc.

120 55th Street NE
Fort Payne, AL 35967 USA

Tel: +1 256 845 7725

