

July 2017

# Frontrunner Entrance Flooring Systems



[www.plastexmatting.com](http://www.plastexmatting.com)

Plastic Extruders Ltd.



## Our Mission *A Mat for All Reasons*

Our mission is to add to our distributors, and in turn their customers, profitability, safety, productivity and style by designing and manufacturing cutting edge matting for all work, education and leisure environments.

### *Our Values*

Founded in 1962, Plastic Extruders Ltd (Plastex) are a second generation family run firm with long serving employees who take personal responsibility for maintaining the highest service standards and delivering the right solution on time and on budget.

### *Working with you to meet your needs*

“ Through our design and innovation program we work with our customers to constantly improve the form, function and cost effectiveness of our products.

Even though we have an extensive range suitable for most applications, we often fulfill individual customer needs by producing custom solutions. If you feel you may have one we would be pleased to hear from you. ”



PETER O'SULLIVAN  
Sales Director

DAVID O'SULLIVAN  
Managing Director

Plastic Extruders Ltd UK & Plastex Matting Inc USA



Follow Plastex Matting on:

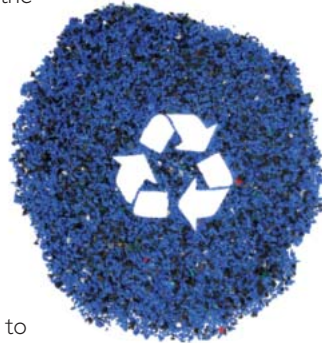




## **Plastex** *and the environment*

As a global supplier with manufacturing plants in the UK and the USA, we constantly seek to reduce the environmental impact of our manufacturing processes. For example, all our black matting is made with up to 100% post-industrial recycled material, but always with a minimum content of 30%.

To further minimize impact and avoid waste, we don't throw away any materials. All our factory trimmings and production process scrap are re-used in our own production. We do not re-sell any material to 3rd party reprocessors.



### **In compliance with REACH regulation**

The 2007 European Community REACH regulation (Registration, Evaluation, Authorization and Restriction of Chemicals) gives manufacturers the responsibility of providing high level human and environmental protection from the use of chemicals in manufacturing.

Plastex does not use any substances currently included on the SVHC (Substances of Very High Concern) list under REACH, including "DEHP" Di(2-ethylhexyl) phthalate, also known as Dioctyl phthalate (DOP), plasticizer.

### **In compliance with Proposition 65**

Plastex conforms with The State of California Safe Drinking Water and Toxic Enforcement Act of 1986, also known as Proposition 65 (Prop 65).

Further information can be found at [www.plastexmatting.com](http://www.plastexmatting.com).

Matting & flooring manufactured  
in Europe and the USA.  
- Distributed worldwide



Ensure you have been supplied with a genuine Plastex product



To avoid plagiarism, today we emboss the trademarked names on the underside of our grid matting.

---

## Testing and Measurement

In our constant pursuit of excellence, we subject our products to the rigors of scientific testing. This includes external testing through international bodies, but we don't stop there. If an external test doesn't exist, we will commission a University research project. Plastex continually strives to ensure we maintain the highest standards expected by our customers worldwide.

---

## Plastex

### Three levels of service

Once we've established your exact need, we'll recommend the product that is right for you, from our three levels of service.

#### General Purpose

We have an extensive range of general purpose matting designed for various environments. So whether you're looking for comfort, slip resistance, soil removal or increased hygiene, we will have the product for you.

#### Specialist

We have also built up a full range of products for demanding specialist environments such as light and heavy industrial, as well as food preparation both big and small.

#### Customization

If we can't exactly meet your needs from our current range, we will design and manufacture a mat specifically for you.

**Whatever your requirements we will put all our knowledge and care into delivering exactly the mat you need, on time and on budget - "A mat for all reasons".**



# Why is Entrance Flooring important?

Choosing the right entrance flooring matters for three good reasons:

- Style
- Health and Safety
- Cleanliness and Durability

## Style

Your entrance flooring is, by definition, one of the first things clients and visitors see; so it plays a vital role in creating first impressions. As you'll see from the location pictures in this brochure our range of colors, custom logos, styles and tread patterns will make sure you get it right.

## Health and Safety

Unfortunately, we live in a litigious age which is why it's good to know the Frontrunner entrance matting products are tested under DIN 51130 and achieved ratings as high as R12. This means they have been tested to be slip resistant at an angle of 27°, even when wet. This translates to peace of mind that your entrance flooring system is independently tested giving a performance safe entrance flooring. Additionally, the Frontrunner Entrance Flooring System conforms to the requirements of the BS 8300:2009 Design of buildings and their approaches to meet the needs of disabled people.

## Cleanliness and Durability

Up to 80% of dirt comes into your building on shoes or wheels. All Frontrunner entrance flooring is designed to remove, trap and hide this dirt from the traffic areas until it is easily removed during cleaning.

Our flooring deals with dirt so effectively that it will expand the life of your internal floor finishes and will help reduce your cleaning intervals. Frontrunner's one piece welded roll format ensures a durable and effective product. For further peace of mind, many of the installations shown in this brochure have been in place for ten years or more and still look as good as the day they were fitted.

## Why Frontrunner Entrance Flooring System?

- All PVC Grid products are 100% recyclable and REACH\* compliant
- Excellent Fire rating - EN & ASTM
- Available in rolls for seamless, quick and easy installations on-site
- Loose lay open grid construction removes dirt from traffic area and eases cleaning
- R12 slip resistance rating under DIN 51130 on Frontrunner XT and R11 rating on Frontrunner Entry, Frontrunner SB and Frontrunner SB+
- Frontrunner Plus available in 16 different color combinations. May also be customized with the incorporation of a logo panel
- Qualifies for IEQ Credit 5: Indoor Chemical and Pollutant Source Control LEED 2009 for New Construction and Major Renovations Rating System



ISO 9001 accredited  
(UK since 1993)  
ensures quality entrance  
flooring systems that  
are fit for purpose.



Founder Member

Directive EC 1907/2006 – Annex I



\* Registration, Evaluation,  
Authorization and Restriction  
of Chemical substances.

# FRONTRUNNER ENTRANCE FLOORING SYSTEM



## Vinyl Entrance Flooring System for high traffic areas

*Recommended and Installed Worldwide for:*

- Hotels • Hospitals • Industrial sites • Leisure facilities
- Office/Banks • Public buildings • Restaurants
- Retail locations • Schools • Supermarkets



# Which Frontrunner Entrance Flooring System is right for you?

Depending on the area you are looking to cover and amount of traffic, we recommend choosing a primary matting for effective removal of dirt and a secondary matting for removal of any residual dirt and drying of moisture.

PRODUCT	FRONT/ SIDE ELEVATION	SLIP RESISTANCE	SCRAPER	MOISTURE REMOVAL	LOCATION	USAGE
<b>VINYL OPEN GRID CONSTRUCTION - PRIMARY MATTING</b>						
Frontrunner Entry Frontrunner Entry Low Profile p. 6					<b>B</b>	High traffic internal areas.
Frontrunner XT p. 7					<b>A</b> <small>(also ideal for walkways, balconies and decking)</small>	High traffic internal or external areas.
<b>VINYL OPEN GRID CONSTRUCTION WITH BRUSH INSERTS - PRIMARY MATTING</b>						
Frontrunner Brush p. 8					<b>A</b>	Maximum dirt removal in internal/external areas.
Frontrunner Brush Wide p. 9					<b>A</b>	Larger debris removal in external areas.
<b>VINYL OPEN GRID CONSTRUCTION WITH ABSORBENT INSERTS - SECONDARY MATTING</b>						
Frontrunner Plus Frontrunner Plus Low Profile p. 10					<b>B C</b>	Maximum moisture removal in high traffic internal areas.
<b>VINYL OPEN RIBBED CONSTRUCTION WITH A SOLID BACK - SECONDARY MATTING</b>						
Frontrunner SB p. 14					<b>B</b>	Surface mounted in high traffic internal areas.
Frontrunner SB+ p. 15					<b>B C</b>	Surface mounted moisture removal in high traffic internal areas.





# FRONTRUNNER ENTRY

## Open grid, slip resistant and heel-proof matting

A uniquely effective matting to help prevent dirt from entering buildings in high traffic entryways.

The aggressive diamond tread pattern scrapes dirt off shoes, while the 9/16" (14mm) or 13/32" (10.5mm) open grid structure allows it to fall out of the way. This efficient, high quality, "scrape and clean" system also protects internal floor coverings and significantly reduces cleaning costs.

The special close space design of the open grid bars also allows the product to be spike heel proof and suitable for wheel chairs, shopping carts and other small wheeled traffic. Fronrunner Entry can be used in combination with other products from the Fronrunner Entrance Flooring System range for a complete interior and exterior entrance matting solution.



### BENEFITS

Certified slip resistance **DIN 51130: R11** **ASTM I677: 0.6/0.6**

Excellent drainage **DIN 51130: V10**

Fire resistant

Easy to maintain

Seamless, quick and easy installations

Easy to cut on site, contours to uneven surfaces

Spike heel proof

Enhanced branding on styling

### FEATURES

Diamond cut pattern

Two layer open grid construction

**EN 13501 - I : 2007- Bfl - S1** **ASTM E648: Class I**

Can be rolled up or lifted for cleaning

Supplied in 33' (10m) rolls - modules also available

Made from flexible PVC

Close mesh grid matting

5 standard grid colors

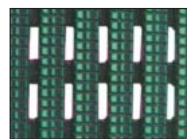
### STANDARD COLORS



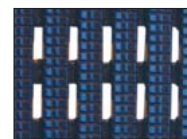
DARK GRAY



DARK BROWN



HOLLY GREEN



OXFORD BLUE



BLACK

Other colors available on request.

### Fronrunner Entry Low Profile

A low profile 13/32" (10.5mm) option that aligns with standard ceramic floor tiles and carpets in recessed applications. This can prevent the need for creating a deeper matwell in an existing subfloor in order to accommodate the entrance matting system.

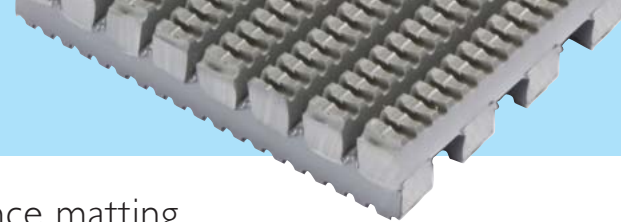
### STANDARD SIZES

PRODUCT	HEIGHT	STANDARD ROLL OPTIONS			STANDARD MODULE OPTIONS*		
Frontrunner Entry	9/16" (14mm)	2' x 33' (0.6 x 10m)	3' x 33' (0.91 x 10m)	4' x 33' (1.2 x 10m)	2' 7" x 3' 11" (0.8 x 1.2m)	3' 3" x 4' 11" (1 x 1.5m)	3' 7" x 6' 7" (1.1 x 2m)
Low Profile	13/32" (10.5mm)	2' x 33' (0.6 x 10m)	3' x 33' (0.91 x 10m)	4' x 33' (1.2 x 10m)			

\*Surface modules are supplied with factory fitted PVC ramped edging to four sides.



# FRONTRUNNER XT



## Extra slip resistant and heel-proof entrance matting

An entrance matting with a deeper etched tread for interior and exterior high traffic applications.

With all the features of Frontrunner Entry, Frontrunner XT has an extra aggressive, deep etched tread to give additional underfoot traction in outdoor applications and to remove the heaviest amounts of undershoe dirt and debris.

Frontrunner XT has therefore been successfully used where walkways and entrances are prone to becoming slippery and hazardous in wet conditions, and in particular on hardwood decking, bridges and general outdoor pedestrian areas.



### BENEFITS

- Certified slip resistance **DIN 51130: R12**
- Excellent drainage **DIN 51130: V10**
- Fire resistant
- Easy to maintain
- Seamless, quick and easy installations
- Easy to cut on site, contours to uneven surfaces
- Spike heel-proof
- Enhanced branding or styling

### FEATURES

- Diamond cut pattern
- Two layer open grid construction
- EN 13501 - I : 2007- Bfl - S1**
- Can be rolled up or lifted for cleaning
- Supplied in 33' (10m) rolls
- Made from flexible PVC
- Close mesh grid matting
- 3 standard grid colors

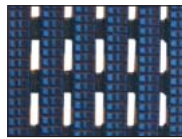
### STANDARD COLORS



DARK GRAY



BLACK



OXFORD BLUE

### STANDARD SIZES

PRODUCT	HEIGHT	STANDARD ROLL OPTIONS*		
Frontrunner XT	9/16" (14mm)	2' x 33' (0.6 x 10m)	3' x 33' (0.91 x 10m)	4' x 33' (1.2 x 10m)

\*To ensure maximum flexibility and convenience, Frontrunner entrance matting system can be delivered in rolls or cut to size.



# FRONTRUNNER BRUSH

## Slip resistant entrance matting with brush inserts

For maximum moisture and dirt removal in external areas.

The brush strips with bristles will scour snow, mud and other heavy contaminants from the shoe, boot or wheel, helping to keep dirt from entering buildings, even under the most extreme weather conditions.

Frontrunner Brush works as a "stand alone" module or in combination with other Frontrunner Entrance Flooring Systems.



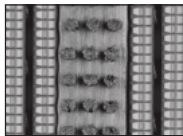
### BENEFITS

- High soil removal and slip resistance
- Excellent drainage
- Excellent scraping
- Fire resistant
- Easy to maintain
- Seamless, quick and easy installations
- Easy to cut on site, contours to uneven surfaces

### FEATURES

- Diamond cut pattern
- Two layer open grid construction
- Nylon brush inserts
- EN 13501 - 1 : 2007- Cfl - S2
- Can be rolled up or lifted for cleaning
- Supplied in 33' (10m) rolls - modules also available
- Made from flexible PVC

### STANDARD COLORS



DARK GRAY



BLACK



### STANDARD SIZES

PRODUCT	HEIGHT	STANDARD ROLL OPTIONS*			STANDARD MODULE OPTIONS**		
Frontrunner Brush	9/16" - 3/4" (14-19mm)	2' x 33' (0.6 x 10m)	3' x 33' (0.91 x 10m)	4' x 16'6" (1.2 x 5m)	2' 7" x 3' 11" (0.8 x 1.2m)	3' 3" x 4' 11" (1 x 1.5m)	3' 7" x 6' 7" (1.1 x 2m)

\*Contact us for custom dimensions.

\*\*Surface modules are supplied with factory fitted PVC ramped edging to four sides.

# FRONTRUNNER BRUSH WIDE

## Extra wide grid matting with brush inserts

For large debris removal in external areas.

Icy and snowy winter months can be characterized by a lot of gravel, snow or stones.

With similar properties to Frontrunner Brush, but with a wider grid that allows larger debris such as small stones, snow and ice to fall through and be contained.

It works either as a stand alone or can be interchanged with another Frontrunner system in summer months to provide the complete entrance solution.



### BENEFITS

- Ideal for removing salt, snow or gravel
- High soil removal and slip resistance
- Excellent drainage
- Excellent scraping
- Fire resistant
- Easy to maintain
- Seamless, quick and easy installations
- Easy to cut on site, contours to uneven surfaces

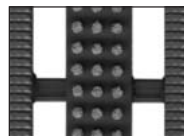
### FEATURES

- Extra wide grid
- Diamond cut pattern
- Two layer open grid construction
- Nylon brush inserts
- EN 13501 - I : 2007- Cf1 - S1
- Can be rolled up or lifted for cleaning
- Supplied in 33' (10m) rolls - modules also available
- Made from flexible PVC

### STANDARD COLORS



DARK GRAY



BLACK



### STANDARD SIZES

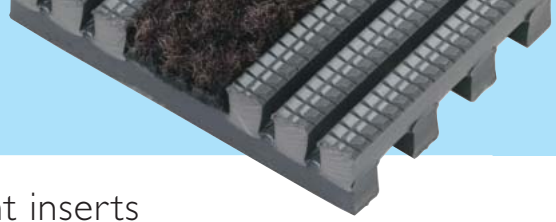
PRODUCT	HEIGHT	STANDARD ROLL OPTIONS*			STANDARD MODULE OPTIONS**		
Frontrunner Brush Wide	9/16" - 3/4" (14-19mm)	2' x 33' (0.6 x 10m)	3' x 33' (0.91 x 10m)	4' x 16'6" (1.2 x 5m)	2' 7" x 4' (0.8 x 1.2m)	3' 3" x 4'11" (1 x 1.5m)	3' 7" x 6'7" (1.1 x 2m)

\*Contact us for custom dimensions.

\*\*Surface modules are supplied with factory fitted PVC ramped edging to four sides.



# FRONTRUNNER PLUS



## Open grid entrance matting with absorbent inserts

Maximum removal of residual dirt and moisture in high traffic internal areas.

Protects your internal floorings and reduces cleaning costs.

Frontrunner Plus, available in two heights, is an open grid vinyl construction spike heel-proof and wheelchair friendly entry mat. It effectively removes, retains and dries soil and moisture from underfoot thanks to its slip-resistant surface and absorbent inserts. The positioning of the scraper bars on Frontrunner Entrance Flooring System can be varied to allow the incorporation of a logo panel. The system is of one-piece vinyl construction and is therefore both quiet underfoot and ideal for use in conjunction with under floor and upright loss prevention systems.



### BENEFITS

- High soil removal & slip resistance
- Excellent drainage
- Maximum moisture removal
- Fire resistant
- Easy to maintain
- Seamless, quick and easy installations
- Easy to cut on site, contours to uneven surfaces
- Heel and wheel-proof
- Reduces the need of a deeper matwell
- Enhanced branding or styling

### FEATURES

- Diamond cut pattern
- Two layer open grid construction
- Absorbent inserts
- Certified EN 13501 - 1 : 2007- Cfl - S2 ASTM E648 : Class I
- Can be rolled up or lifted for cleaning
- Supplied in 33' (10m) rolls - modules also available
- Made from flexible PVC
- Close mesh grid matting
- Available in a low profile 13/32" (10.5mm) option
- Up to 50 different color combinations available

### STANDARD COLORS

For grid colors and carpet color combinations please see pages 12-13.

### STANDARD SIZES

PRODUCT	HEIGHT	STANDARD ROLL OPTIONS*			STANDARD MODULE OPTIONS**		
Frontrunner Plus	9/16" - 5/8" (14 - 16mm)	2' x 33' (0.6 x 10m)	3' x 33' (0.91 x 10m)	4' x 33' (1.2 x 10m)	2' 7" x 3' 11" (0.8 x 1.2m)	3' 3" x 4' 11" (1 x 1.5m)	3' 7" x 6' 7" (1.1 x 2m)
Low Profile	13/32" - 1/2" (10.5 - 12mm)	2' x 33' (0.6 x 10m)	3' x 33' (0.91 x 10m)	4' x 33' (1.2 x 10m)			

\*Contact us for custom dimensions.  
\*\*Surface modules are supplied with factory fitted PVC ramped edging to four sides.

#### Frontrunner Plus Low Profile

A low profile 13/32" (10.5mm) option that aligns with standard ceramic floor tiles and carpets in recessed applications without the need to create a deeper matwell in an existing subfloor.

# CUSTOM LOGOS

The positioning of the scraper bars on Frontrunner Entrance Flooring Systems can be varied to allow the incorporation of a logo panel.

Logo panels are achieved by die cutting with another compatible high quality absorbent insert, giving a permanent and color-fast message.

Logo panels run the width of the matwell and are 18-20" tall, providing a highly visible message in the all important 'first impression' area.

Frontrunner Entrance Systems incorporating logos can be supplied for recessed systems or surface mounted modular mats.

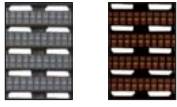




# DESIGN COMBINATIONS

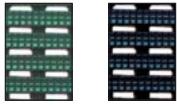
Frontrunner Plus is available in a choice of 5 grid colors and 10 coordinating absorbent insert colors. Shown below is each absorbent insert swatch with the most popular grid choice and the 5 alternative grid colors available.

ALTERNATIVE  
GRID COLORS:



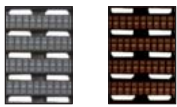
Dark Gray

Dark Brown



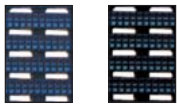
Holly Green

Black



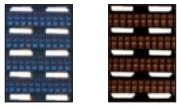
Dark Gray

Dark Brown



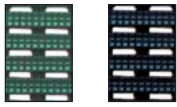
Oxford Blue

Black



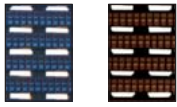
Oxford Blue

Dark Brown



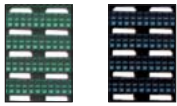
Holly Green

Black



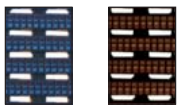
Oxford Blue

Dark Brown



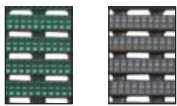
Holly Green

Black



Oxford Blue

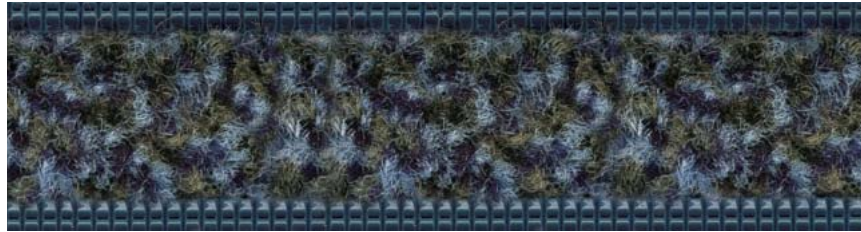
Dark Brown



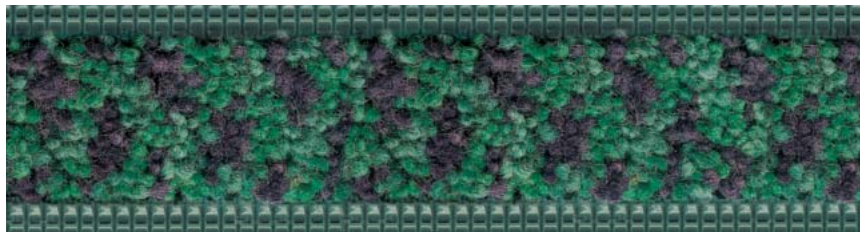
Holly Green

Dark Gray

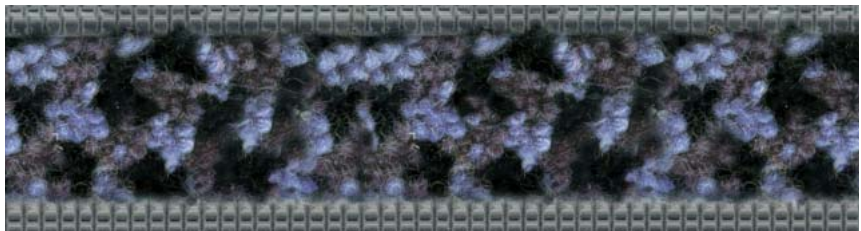
INSERT: **BASALT**  
GRID SHOWN: **OXFORD BLUE**



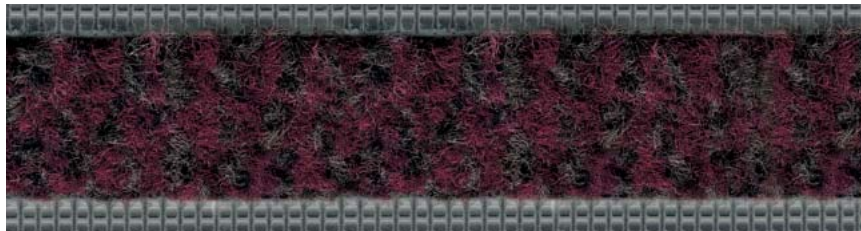
INSERT: **80/20+ GREEN\***  
GRID SHOWN: **HOLLY GREEN**



INSERT: **80/20+ GRAY\***  
GRID SHOWN: **DARK GRAY**



INSERT: **SANDSTONE**  
GRID SHOWN: **DARK GRAY**



INSERT: **SLATE**  
GRID SHOWN: **BLACK**



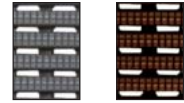


This provides a combination of 50 differing colorways designed to create the optimum choice for today's interior designer and specifier alike. (See [www.plastexmatting.com/frontrunner-plus.html](http://www.plastexmatting.com/frontrunner-plus.html) for full specifications).

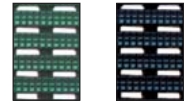
INSERT: 3025  
GRID SHOWN: OXFORD BLUE



ALTERNATIVE  
GRID COLORS:



Dark Gray      Dark Brown

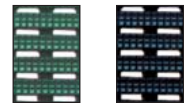


Holly Green      Black

INSERT: 605  
GRID SHOWN: DARK BROWN

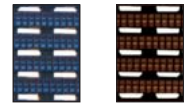
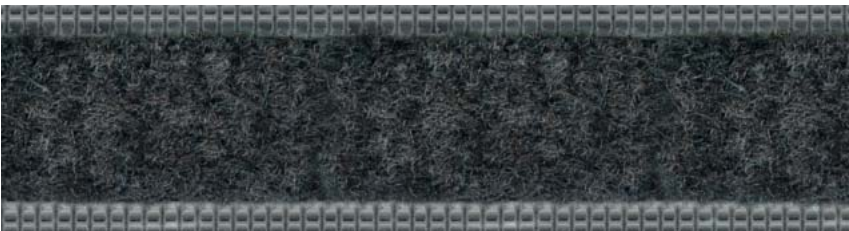


Dark Gray      Oxford Blue

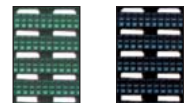


Holly Green      Black

INSERT: 606  
GRID SHOWN: DARK GRAY



Oxford Blue      Dark Brown

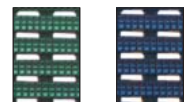


Holly Green      Black

INSERT: 607  
GRID SHOWN: BLACK



Dark Gray      Dark Brown

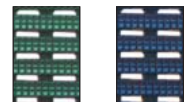


Holly Green      Oxford Blue

INSERT: 608  
GRID SHOWN: BLACK



Dark Gray      Dark Brown



Holly Green      Oxford Blue

Color range shown above may therefore be subject to variation, please check selected carpet insert color(s) prior to ordering. Due to limitations of the printing process, actual colors shown may vary. All carpet insert colors are subject to manufacturing availability.

# FRONTRUNNER SB

## Vinyl ribbed, solid backed entrance matting

Laid directly on top of sub-floor, Frontrunner SB, being ¼" thick, removes the need for a matwell and fits easily within existing floor coverings or surrounded by carpet tiles.

Frontrunner SB's ribbed pattern scrapes dirt at the entrance area, which is effectively contained away from the traffic area. The solid backing and ribbed construction enable quick and effective vacuuming.

Frontrunner SB can also be used on top of current flooring with ramped edging to provide a slip resistant walkway.



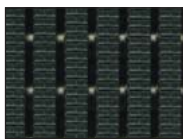
### BENEFITS

- Certified slip resistance **DIN 51130: R11** **ASTM C1028: 0.6/0.6**
- Fire resistant
- Surface mounted
- Can be adhered to sub-floor in high traffic areas
- Easy to cut on site, contours to uneven surfaces
- Seamless, quick and easy installations
- Lightweight
- Heel and wheel-proof
- Rolling resistance

### FEATURES

- Etched pattern
- Certified **EN 13501 - I : 2007- Cf1 - S1** **ASTM E648: Class 2**
- ¼" (6.5mm) grid height
- Solid backing
- Made from flexible PVC
- Supplied in 33' (10m)
- One layer hollow construction
- Close mesh grid matting
- ASTM F2753:** No apparent damage to the vinyl portion of the system after 1,000 cycles at 500lbs

### STANDARD COLORS



BLACK



GRAY



### STANDARD SIZES

PRODUCT	HEIGHT	STANDARD ROLL OPTION
Frontrunner SB	1/4" (6.5mm)	3'3" x 33' (1 x 10m)

# FRONTRUNNER SB+

## Vinyl ribbed, solid backed entrance matting with carpet inserts

Without the need of a recessed matwell, Frontrunner SB+ cleans, scrapes and dries dirt and moisture at the entrance.

In addition to Frontrunner SB's ribbed pattern that scrapes dirt off shoes and solid back for containment of dirt, Frontrunner SB+ has added absorbent inserts with monofilament scrapers to remove moisture at the entrance.

Featuring a grid of ¼" thickness, Frontrunner SB+ can either be laid directly on top of sub-floor or be used on top of current flooring with ramped edging.



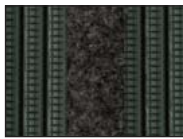
### BENEFITS

- Certified slip resistance **DIN 51130: R11** **ASTM 1677: 0.6/0.6**
- Maximum moisture removal
- Fire resistant
- Surface mounted
- Can be adhered to sub-floor in high traffic areas
- Easy to cut on site, contours to uneven surfaces
- Seamless, quick and easy installations
- Lightweight
- Heel and wheel-proof
- Rolling resistance

### FEATURES

- Etched pattern
- Absorbent inserts with monofilament scrapers
- EN 13501 - I : 2007- Cfl - S1** **ASTM E648: Class 2**
- ¼" grid height
- Solid backing
- Made from flexible PVC
- Supplied in 33' (10m)
- One layer hollow construction
- Close mesh grid matting
- ASTM F2753: 0.080** thickness loss after 1,000 cycles at 500lbs

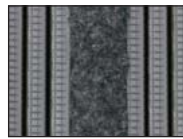
### STANDARD COLORS



BLACK WITH 607 INSERT



BLACK WITH 608 INSERT



GRAY WITH 606 INSERT



GRAY WITH 607 INSERT



### STANDARD SIZES

PRODUCT	HEIGHT	STANDARD ROLL OPTION	STANDARD MODULE OPTION*
Frontrunner SB+	1/4" - 5/16" (6.5/8mm)	3'3" x 33' (1 x 10m)	3'3" x 4'11" (1 x 1.5m)

\*Surface modules are supplied with factory fitted PVC ramped edging to four sides.



# FRONTRUNNER ENTRANCE

Frontrunner modules can be positioned in minutes and are available in three standard sizes as shown below, in a range of colors with factory fitted ramped edging to four sides.



Frontrunner Entry



Frontrunner Brush



Frontrunner Brush Wide



Frontrunner Plus



Frontrunner Plus



Frontrunner SB+

PRODUCT	HEIGHT	STANDARD MODULE OPTIONS		
Frontrunner Entry	9/16" (14mm)	2'7" x 4' (80 x 120cm)	3'3" x 4'11" (100 x 150cm)	3'7" x 6'7" (110 x 200cm)
Frontrunner Brush	3/4" (19mm)	2'7" x 4' (80 x 120cm)	3'3" x 4'11" (100 x 150cm)	3'7" x 6'7" (110 x 200cm)
Frontrunner Brush Wide	3/4" (19mm)	2'7" x 4' (80 x 120cm)	3'3" x 4'11" (100 x 150cm)	3'7" x 6'7" (110 x 200cm)
Frontrunner Plus	5/8" (16mm)	2'7" x 4' (80 x 120cm)	3'3" x 4'11" (100 x 150cm)	3'7" x 6'7" (110 x 200cm)
Frontrunner SB+	5/16" (8mm)		3'3" x 4'11" (100 x 150cm)	





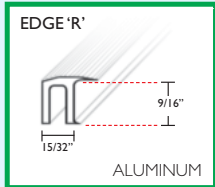
# FLOORING SURFACE MODULES



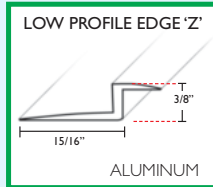
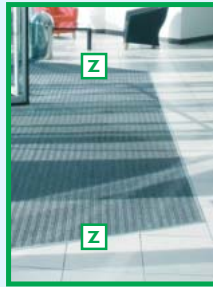


# Recessed Ancillaries

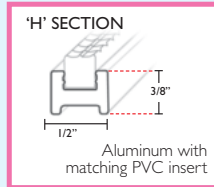
For recessed applications, a full range of frames and dividers are purposely designed to provide level and smooth transitions, and simple installations during actual entrance fit out. For full details visit [www.plastexmatting.com/recessed-ancillaries.html](http://www.plastexmatting.com/recessed-ancillaries.html)



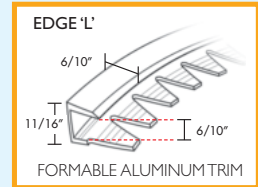
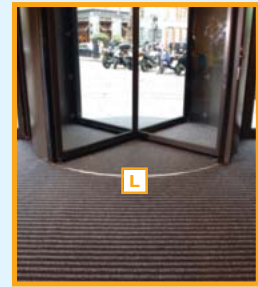
For left and right extremities of well to cap and secure ends of 9/16" - 3/8" matting.



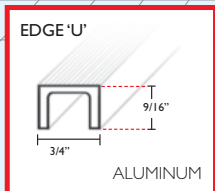
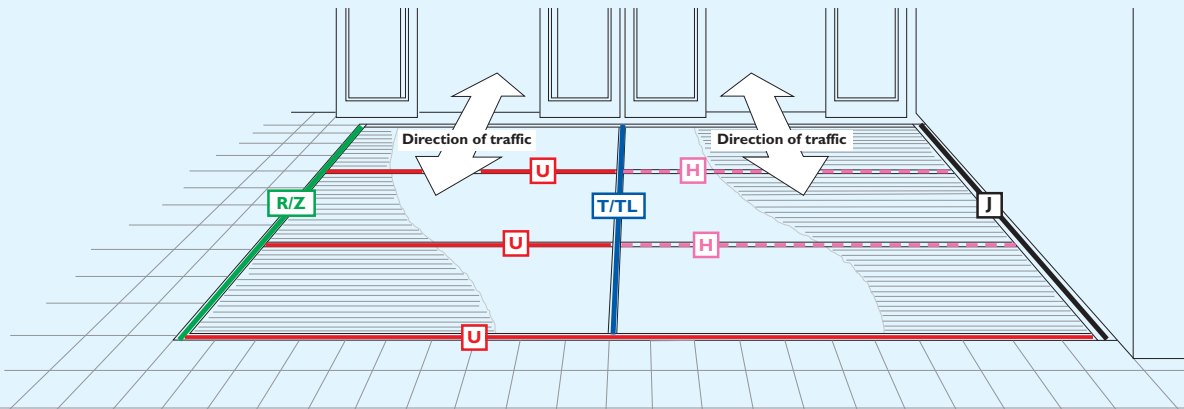
Used for left and right extremities of 3/8" matting in conjunction with ceramic tiles.



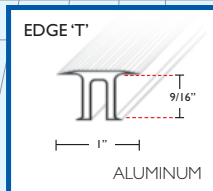
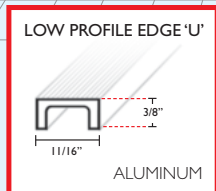
Used as "an invisible divider" for front to back installations of 9/16" - 3/8" matting.



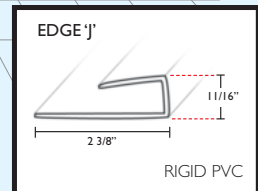
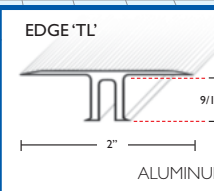
For circular door and non-rectangular installations of 9/16" - 3/8" matting.



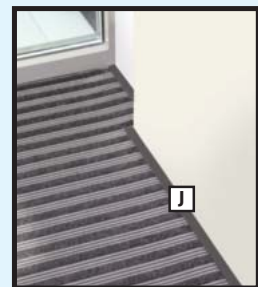
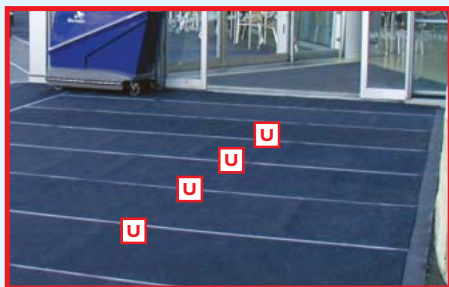
A front to back frame or divider used with 9/16" - 3/8" matting.



Frames of different widths used as dividers for large left to right installations of 9/16" matting.



For left and right extremities of well to cap and secure ends of 9/16" matting when against a wall.



Aluminium frames are available in natural anodized finish. For design elegance and color continuity, the U, R and T frames are also available in Dark Gray and Black. Edge J, in rigid PVC, is available in Dark Gray or Black.



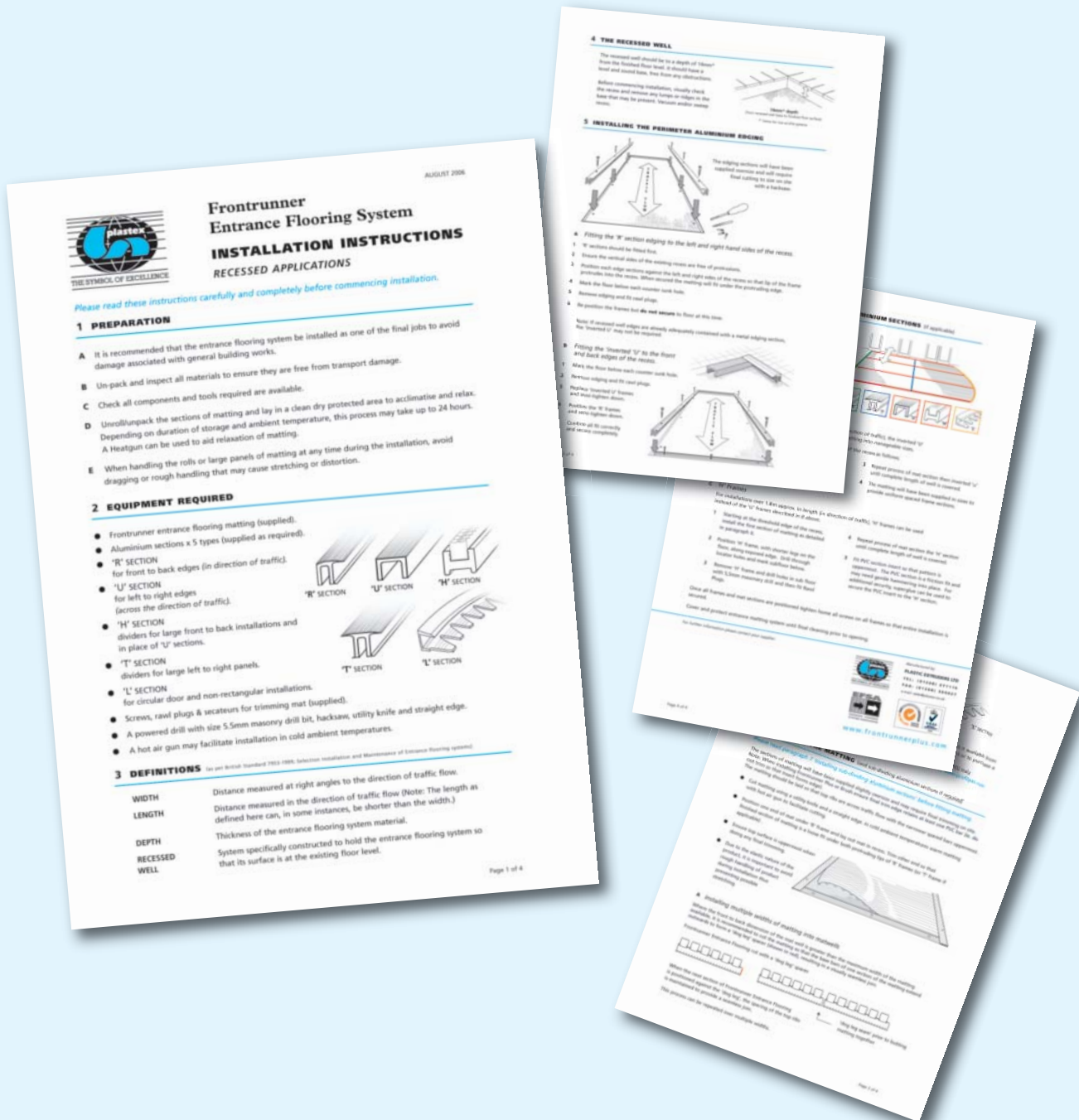
# Recessed Installation Instructions

## No advance templating is required - cut on site, save time and value

The Frontrunner Entrance Flooring System uses a simple but effective framing method, which is installed at the same time as the entrance flooring. As the system is supplied in rolls, the installation is quick and easy and does not require any advance templating. Additional visits to site for fitting the matwell frame when the floor slab is poured are also not required.

A range of frames are utilized where large areas of matting are to be installed. The frames are used to divide, cap and secure ends or form shaped edges where required (see page 18).

The simplicity of the Frontrunner Entrance Flooring Systems allow it to be installed by flooring professionals nationwide.



# Entrance matting surface mounted ancillaries

## Fronrunner Entry & Fronrunner Plus



9/16" x 2 1/2" x 33'  
(14mm x 60mm x 10.1m)

### 2 1/2" PVC edging strip

Supplied in rolls of 33' (10.1m) length with cold welding paste.

Colors: Black, Dark Gray



9/16" x 3 3/4" x 33'  
(14mm x 100mm x 10.1m)

### 3 3/4" PVC edging strip

Supplied in rolls of 33' (10.1m) length with cold welding paste.

Colors: Black, Dark Gray, Yellow

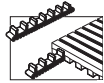


5/8" x 1 13/16" x 6'6"  
(15mm x 45mm x 2m)

### Aluminum edging strip

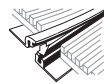
Supplied in sections of 6'6" (2m) length with fixing screws and plugs.

Colors: Anodized Aluminum, Powder Coated Yellow



### Connector clips - side to side

For joining sections of matting side to side. Supplied in packs of 10.



9/16" x 8'2"  
(14mm x 2.5m)

### Snap Track

2 part snap track can be welded to join rolls end to end or side to side for large area covering.

Supplied with cold welding paste.

Color: Dark Gray

## Fronrunner Entry Low Profile

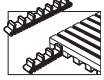


3/8" x 2" x 33'  
(10mm x 50mm x 10.1m)

### 2" PVC edging strip

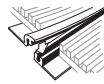
Supplied in rolls of 33' (10.1m) length with cold welding paste.

Colors: Black, Dark Gray



### Connector clips - side to side

For joining sections of matting side to side. Supplied in packs of 10.



13/32" x 5'11"  
(10.5mm x 1.8m)

### Snap Track - Low Profile

2 part low profile snap track can be welded to join rolls end to end or side to side for large area covering.

Supplied with cold welding paste.

## Fronrunner Plus Low Profile

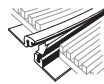


3/8" x 2" x 33'  
(10mm x 50mm x 10.1m)

### 2" PVC edging strip

Supplied in rolls of 33' (10.1m) length with cold welding paste.

Colors: Black, Dark Gray



13/32" x 5'11"  
(10.5mm x 1.8m)

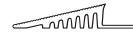
### Snap Track - Low Profile

2 part low profile snap track can be welded to join rolls end to end or side to side for large area covering.

Supplied with cold welding paste.

Color: Dark Gray

## Fronrunner Brush & Fronrunner Brush Wide



9/16" x 2 1/2" x 33'  
(14mm x 60mm x 10.1m)

### 2 1/2" PVC edging strip

Supplied in rolls of 33' (10.1m) length with cold welding paste.

Colors: Black, Dark Gray



9/16" x 3 3/4" x 33'  
(14mm x 100mm x 10.1m)

### 3 3/4" PVC edging strip

Supplied in rolls of 33' (10.1m) length with cold welding paste.

Colors: Black, Dark Gray, Yellow

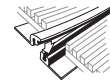


5/8" x 1 13/16" x 6'6"  
(15mm x 45mm x 2m)

### Aluminum edging strip

Supplied in sections of 6'6" (2m) length with fixing screws and plugs.

Colors: Anodized Aluminum, Powder Coated Yellow



9/16" x 8'2"  
(14mm x 2.5m)

### Snap Track

2 part snap track can be welded to join rolls end to end or side to side for large area covering.

Supplied with cold welding paste.

Color: Dark Gray

## Fronrunner XT



9/16" x 2 1/2" x 33'  
(14mm x 60mm x 10.1m)

### 2 1/2" PVC edging strip

Supplied in rolls of 33' (10.1m) length with cold welding paste.

Colors: Black, Dark Gray

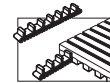


5/8" x 1 13/16" x 6'6"  
(15mm x 45mm x 2m)

### Aluminum edging strip

Supplied in sections of 6'6" (2m) length with fixing screws and plugs.

Colors: Anodized Aluminum, Powder Coated Yellow



### Connector clips - side to side

For joining sections of matting side to side. Supplied in packs of 10.



9/16" x 8'2"  
(14mm x 2.5m)

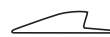
### Snap Track

2 part snap track can be welded to join rolls end to end or side to side for large area covering.

Supplied with cold welding paste.

Color: Dark Gray

## Fronrunner SB & Fronrunner SB+



1/4" x 1" x 197'  
(6.5mm x 30mm x 60m)

### 1" PVC edging strip

Supplied in rolls of 197' (60m) length with cold welding paste.

Colors: Black, Dark Gray



1/8" x 11'9"  
(3.5mm x 3.6m)

### T Joining Strip

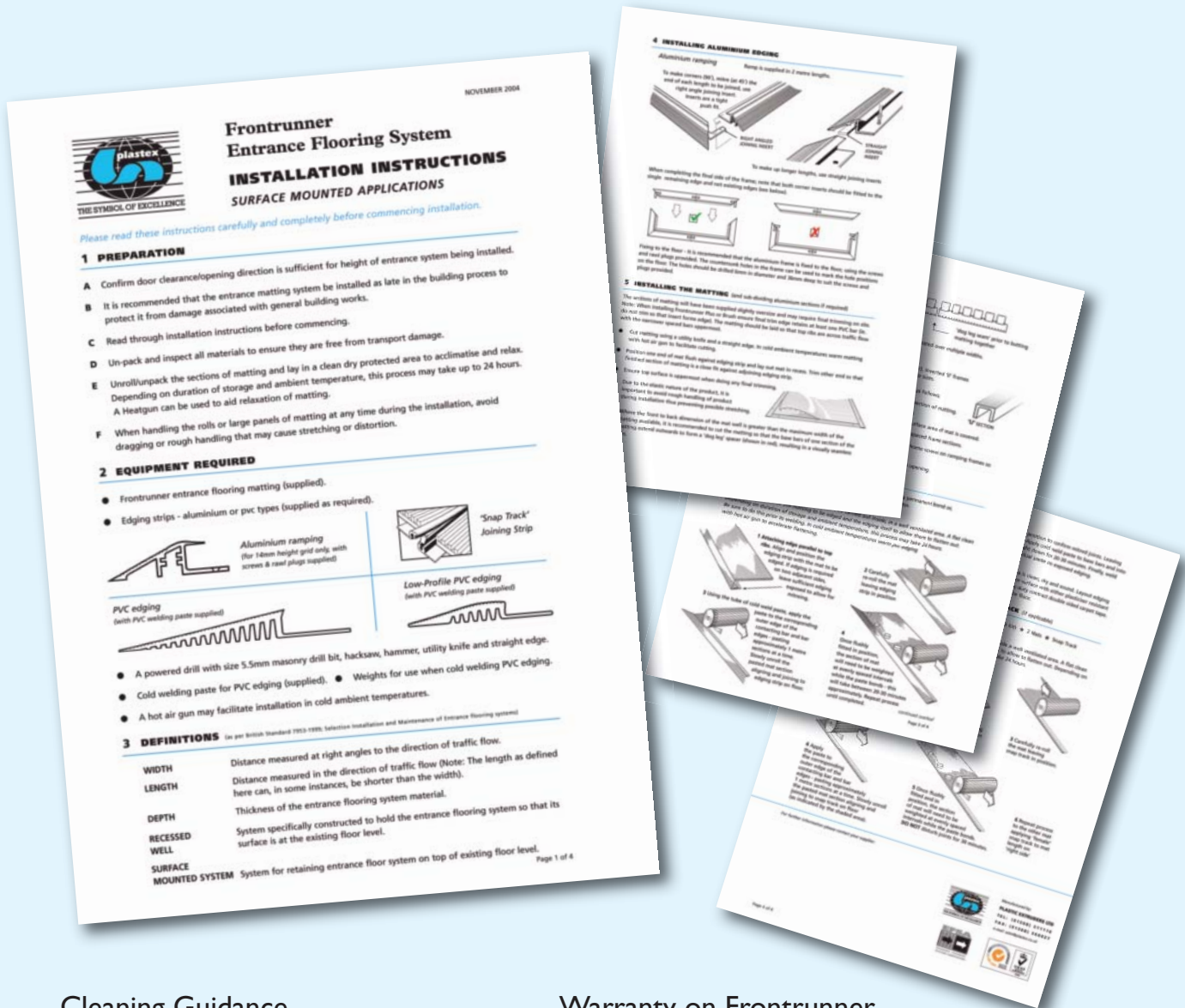
1 part strip can be welded to join rolls end to end or side to side for larger area covering.

Color: Black

# Surface Mounted Installation Instructions

## Easy to follow instructions

Fitting PVC or aluminium ramped ancillaries and connector clips is quick and simple.



## Cleaning Guidance

Fronrunner is also very easy to clean within normal cleaning schedules and doesn't require any specialized cleaning products.

Full cleaning instructions are available at [www.plastexmatting.com/fronrunner-cleaning.html](http://www.plastexmatting.com/fronrunner-cleaning.html)

## Warranty on Fronrunner Entrance Flooring Systems

Fronrunner entrance flooring systems are very durable and many of the installations shown in this brochure have been in place for over ten years and are still performing with admirable style and service. This applies to large retail centers with all the heavy consumer traffic, where we confidently offer a 2-4 year warranty on all of the Fronrunner range.

Full warranty statement:  
[www.plastexmatting.com/warranty-policy.html](http://www.plastexmatting.com/warranty-policy.html)

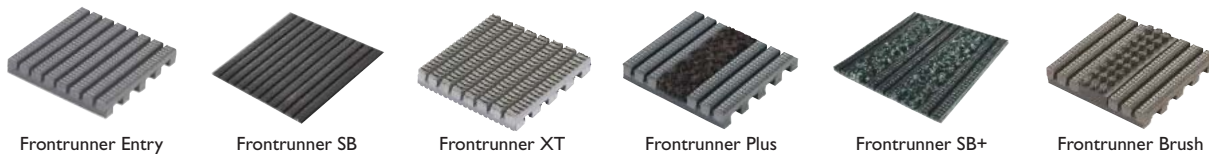
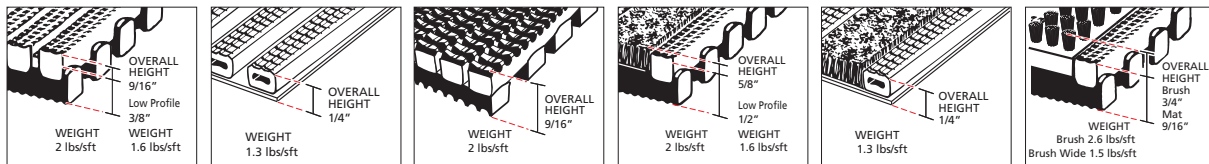


# FRONTRUNNER ENTRANCE FLOORING

## SIZES & WEIGHTS

(all dimensions are nominal)

PRODUCT	LENGTH (')	HEIGHT (")	WIDTHS (')		WEIGHT (lbs/sft)
Rolls					
	Tolerances	0 + 0.3	+/- 0.5		+/- 1
Fronrunner Brush	33'	9/16 - 3/4	2	3	2.6
Fronrunner Brush	16'6"	9/16 - 3/4		4	2.6
Fronrunner BrushWide	33'	9/16 - 3/4	2	3	1.5
Fronrunner BrushWide	16'6"	9/16 - 3/4		4	1.5
Fronrunner Entry or XT	33'	9/16	2	3	2
Fronrunner Entry or XT	16'6"	9/16		4	2
Fronrunner Entry - Low Profile	33'	13/32	2	3	1.6
Fronrunner Entry - Low Profile	16'6"	13/32		4	1.6
Fronrunner Plus	33'	9/16 - 5/8	2	3	2
Fronrunner Plus	16'6"	9/16 - 5/8		4	2
Fronrunner Plus - Low Profile	33'	13/32 - 1/2	2	3	1.6
Fronrunner Plus - Low Profile	16'6"	13/32 - 1/2		4	1.6
Fronrunner SB	33'	1/4		3'3"	1.3
Fronrunner SB+	33'	1/4 - 5/16		3'3"	1.3



## GENERAL SPECIFICATION

### APPEARANCES

**Fronrunner Entry and Fronrunner XT:** Open grid "heel-proof" design.  
**Fronrunner Plus:** Open grid "heel-proof" design with absorbent inserts.  
**Fronrunner Brush:** Open grid "heel-proof" design with nylon brush inserts.  
**Fronrunner Brush Wide:** Wide spaced open grid design with nylon brush inserts.  
**Fronrunner SB:** Open ribbed "heel-proof" design on vinyl sheet.  
**Fronrunner SB+:** Open ribbed "heel-proof" design with Excellence absorbent inserts on vinyl sheet.

### COLORS

Black, Dark Gray, Dark Brown, Holly Green and Oxford Blue homogenous stable colours.  
**Absorbent Inserts:** 10 colour choices. See pages 12-13 or visit [www.plastexmatting.com/fronrunner-plus.html](http://www.plastexmatting.com/fronrunner-plus.html)

### DURABILITY

One piece welded construction for maintenance free life.

### INSTALLATION

**Recessed wells:**  
[www.plastexmatting.com/uploads/4/4/0/0/44003899/fronrunner-installation-guide-recessed-applications.pdf](http://www.plastexmatting.com/uploads/4/4/0/0/44003899/fronrunner-installation-guide-recessed-applications.pdf)  
**Surface mounted applications:**  
[www.plastexmatting.com/uploads/4/4/0/0/44003899/fronrunner-installation-guide-surface-mounted-applications.pdf](http://www.plastexmatting.com/uploads/4/4/0/0/44003899/fronrunner-installation-guide-surface-mounted-applications.pdf)  
**Fronrunner SB and Fronrunner SB+**  
[www.plastexmatting.com/uploads/4/4/0/0/44003899/fronrunner-sb-sb-plus-installation-instructions.pdf](http://www.plastexmatting.com/uploads/4/4/0/0/44003899/fronrunner-sb-sb-plus-installation-instructions.pdf)

### WORKABILITY

Flexible construction is easy to trim and shape on site.  
 Supplied in rolls with top ribs facing outwards. Requires inverting once rolled out prior to use..

### USES

Entrance Flooring Systems for Retail, Hospitality, Offices, Resturants, Leisure, Industrial, Education, High traffic areas etc.

# SYSTEM PRODUCT DATA SHEET

## TECHNICAL DATA

<b>ACOUSTIC</b>	Excellent sound absorption properties.
<b>CHEMICAL</b>	Resistant to most acids, alkalines and oils. For specific chemical resistances, see <a href="http://www.plastexmatting.com/the-chemical-resistance-of-pvc.html">www.plastexmatting.com/the-chemical-resistance-of-pvc.html</a>
<b>COMPOSITION</b>	Flexible DINP plasticised Polyvinyl Chloride (PVC).

**Absorbent Inserts:** see below

	Green & Grey 80/20+	Basalt & Slate	Sandstone	602, 605, 606, 607, 608
Construction	Twist Pile	Cut Pile	Cut Pile	Tufted, Cut Pile
Pile Content	80% wool, 20% nylon & nylon monofilament	100% nylon	100% nylon	100% nylon
Pile Weight	1,450 g/m <sup>2</sup> ± 5%	1,000 g/m <sup>2</sup> ± 5%	1,000 g/m <sup>2</sup> ± 5%	1,080 g/m <sup>2</sup> ± 5%
Pile Height	± 6 mm	± 7 mm (Basalt)	± 6 mm	± 6.5 mm
Total Insert Weight*	4,700 g/m <sup>2</sup> ± 5%	3,900 g/m <sup>2</sup> approx		4,260 g/m <sup>2</sup> ± 5%
Total Insert Height*	± 8 mm approx	± 10 mm (Basalt)	± 8 mm	± 9.7 mm
Primary Backing	Non-woven Polyester	Non-woven Polyester	Non-woven Polyester	Non-woven Polyester
Secondary Backing	PVC incorporating stabilizers	PVC incorporating stabilizers	PVC incorporating stabilizers	Vinyl compound
Flammability		BS 4790 1972 - NBN S 21-203		EN 13501 - I Clf S1

\* Insert carpet & backing.

**Nylon Brush Inserts:** see below

Construction	Aligned Tufting	Bristle Diameter	0.3 mm	Insert Thickness	12 mm
Bristle Content	Nylon 6.6 Monofilaments	Bristle Height	4.5 mm	Backing	PVC

**ENVIRONMENT** Plastex does not use any substances currently included in the SVHC (Substances of Very High Concern) list under R.E.A.C.H.\* in any matting product. All PVC grid products are 100% recyclable.  
\* Registration, Evaluation, Authorisation and restriction of Chemical substances.

**FIRE**  
**Fronrunner Brush:** EN ISO 13501-1:2007-Cfl-S2  
**Fronrunner Entry & Fronrunner XT:** Flame retardant grade - EN ISO 13501-1:2007-Bfl-S1  
**Fronrunner Plus:** EN ISO 13501-1:2007-Cfl-S2  
**Fronrunner Plus Low Profile:** EN ISO 13501-1:2007-Cfl-S2  
**Fronrunner SB and Fronrunner SB+:** EN ISO 13501-1:2007-Cfl-S1  
**Absorbent Inserts:** see above  
**Nylon Brush fibres:** UL94 - V2  
 ASTM E648 - Class 1  
 ASTM E648 - Class 1  
 ASTM E648 - Class 2

**ROLLING RESISTANCE** **ASTM F 2753:** 227 kg (500 lbs) per wheel. Result: After 1,000 passes, 0.080in lost of thickness\*  
 \*Product used for the test was the lightest within the range, Fronrunner SB+

**REVERSION** Thermoplastic shrinkage can result in size reductions up to 2%. Accelerated in hot environments. Refer to [www.plastexmatting.com/dimensional-stability-of-vinyl-matting.html](http://www.plastexmatting.com/dimensional-stability-of-vinyl-matting.html)

**SLIP RESISTANCE** DIN 51130:  
**Fronrunner XT** R12, V10  
**Fronrunner Entry / SB / SB+** R11, V10  
 ASTM F 1677 - Dry/Wet: **Fronrunner Entry** 0.6/0.6  
 ASTM F C1028 - Dry/Wet: **Fronrunner SB** 0.6/0.6

**THERMAL** Functional -9F to 140F (slight size variation may occur at temperature extremes).

**UV LIGHT** Resistant to PVC degradation, uncolored PVC material - BS EN 607 = Delta E 1.02.

**WARRANTY**  
**Fronrunner Entry & Fronrunner XT:** 4 Years [www.plastexmatting.com/warranty-policy.html](http://www.plastexmatting.com/warranty-policy.html)  
**Fronrunner Plus, Fronrunner SB & Fronrunner SB+:** 3 Years  
**Fronrunner Brush, Fronrunner Brush Wide,**  
**Fronrunner Entry Low profile & Fronrunner Plus Low profile:** 2 Years

Specifications are updated with new regulations/international certification. Please refer to [www.plastexmatting.com](http://www.plastexmatting.com) for latest information.



## We make our matting, and that makes all the difference

When you purchase Plastex matting you're also investing in our extensive know-how that comes from over 50 years of designing, testing and manufacturing matting solutions for a diverse range of applications; knowledge we apply to make sure we find exactly the right solution for you.

This is important as an incorrectly specified product may actually increase risk. For example using a mat designed for bare feet in a workplace area could potentially increase slip accidents. That's why simply picking a product from a web page may not deliver the correct solution.

## Talk to Us

To make sure you get the right mat for the right reasons, talk to us and our distributors.



The 45+ products within the Plastex range of matting and flooring offer **"a mat for all reasons"**.

To make it easier for you to choose the right mat for the right reason, we've divided our range into the sections below. Simply pick the section that best suits your need, and then use the segmentation chart you'll find at the front of each section to help you make your final choice.



## Fronrunner Entrance Flooring System

### Product Index

Fronrunner Entry	<b>6</b>
Fronrunner SB	<b>14</b>
Fronrunner XT	<b>7</b>
Fronrunner Brush	<b>8</b>
Fronrunner Brush Wide	<b>9</b>
Fronrunner Plus	<b>10</b>
Fronrunner Plus Design Combinations	<b>12-13</b>
Fronrunner Plus Custom Logos	<b>11</b>
Fronrunner SB+	<b>15</b>

Full Manufacturer  
Warranty - Another good  
reason to choose Plastex

All Plastex flooring and matting products will give excellent and long service. In the unlikely event a Plastex product has a defect in workmanship, we offer a full refund or replacement warranty. The warranty periods vary depending on the product, please view full terms and details at [www.plastexmatting.com/warranty-policy.html](http://www.plastexmatting.com/warranty-policy.html)



[www.plastexmatting.com](http://www.plastexmatting.com)

**Plastic Extruders Ltd.**

Russell Gardens, Wickford,  
Essex SS11 8DN, England

Tel: +44 (0) 1268 571116

**Plastex Matting, Inc.**

120 55th Street NE  
Fort Payne, AL 35967 USA

Tel: +1 256 845 7725

