

July 2017

Workplace

ANTI-FATIGUE MATTING



www.plastexmatting.com

Plastic Extruders Ltd.



Our Mission *A Mat for All Reasons*

Our mission is to add to our distributors, and in turn their customers, profitability, safety, productivity and style by designing and manufacturing cutting edge matting for all work, education and leisure environments.

Our Values

Founded in 1962, Plastic Extruders Ltd (Plastex) are a second generation family run firm with long serving employees who take personal responsibility for maintaining the highest service standards and delivering the right solution on time and on budget.

Working with you to meet your needs

“ Through our design and innovation program we work with our customers to constantly improve the form, function and cost effectiveness of our products.

Even though we have an extensive range suitable for most applications, we often fulfill individual customer needs by producing custom solutions. If you feel you may have one we would be pleased to hear from you. ”



PETER O'SULLIVAN
Sales Director

DAVID O'SULLIVAN
Managing Director

Plastic Extruders Ltd UK & Plastex Matting Inc USA



Follow Plastex Matting on:

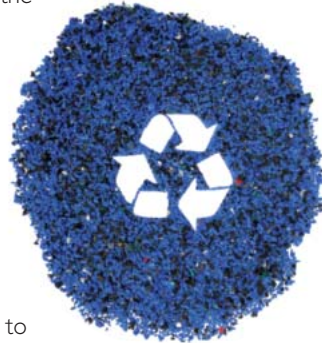




Plastex *and the environment*

As a global supplier with manufacturing plants in the UK and the USA, we constantly seek to reduce the environmental impact of our manufacturing processes. For example, all our black matting is made with up to 100% post-industrial recycled material, but always with a minimum content of 30%.

To further minimize impact and avoid waste, we don't throw away any materials. All our factory trimmings and production process scrap are re-used in our own production. We do not re-sell any material to 3rd party reprocessors.



In compliance with REACH regulation

The 2007 European Community REACH regulation (Registration, Evaluation, Authorization and Restriction of Chemicals) gives manufacturers the responsibility of providing high level human and environmental protection from the use of chemicals in manufacturing.

Plastex does not use any substances currently included on the SVHC (Substances of Very High Concern) list under REACH, including "DEHP" Di(2-ethylhexyl) phthalate, also known as Dioctyl phthalate (DOP), plasticizer.

In compliance with Proposition 65

Plastex conforms with The State of California Safe Drinking Water and Toxic Enforcement Act of 1986, also known as Proposition 65 (Prop 65).

Further information can be found at www.plastexmatting.com.

Matting & flooring manufactured
in Europe and the USA.
- Distributed worldwide



Ensure you have been supplied with a genuine Plastex product



To avoid plagiarism, today we emboss the trademarked names on the underside of our grid matting.

Testing and Measurement

In our constant pursuit of excellence, we subject our products to the rigors of scientific testing. This includes external testing through international bodies, but we don't stop there. If an external test doesn't exist, we will commission a University research project. Plastex continually strives to ensure we maintain the highest standards expected by our customers worldwide.

Plastex

Three levels of service

Once we've established your exact need, we'll recommend the product that is right for you, from our three levels of service.

General Purpose

We have an extensive range of general purpose matting designed for various environments. So whether you're looking for comfort, slip resistance, soil removal or increased hygiene, we will have the product for you.

Specialist

We have also built up a full range of products for demanding specialist environments such as light and heavy industrial, as well as food preparation both big and small.

Customization

If we can't exactly meet your needs from our current range, we will design and manufacture a mat specifically for you.

Whatever your requirements we will put all our knowledge and care into delivering exactly the mat you need, on time and on budget - "A mat for all reasons".

Why anti-fatigue matting?

Prolonged standing at work is the most common cause for work-related discomfort. Statistics confirm fatigue and resultant productivity reductions are a major workplace problem. Employers who provide high quality underfoot comfort will:

- **Improve concentration**
- **Decrease risk of circulatory problems**
- **Improve productivity**
- **Decrease injury risk**

The patented foam used in Zed Land, Zed Tred and Zed Chex provides excellent standing fatigue reduction, hard wearing and continued resilience long after less expensive foam matting will have deadened.

Which Plastex product is right for you?

The chart below will help you choose the right mat for the right reasons, but if you have any questions contact us - we'll be delighted to help.

PRODUCT	SLIP RESISTANCE	WEAR	BOUNCE/FATIGUE REDUCTION	DRAINAGE/ SPILLAGE	SITUATION	USAGE
GENERAL PURPOSE - Suitable for most dry applications						
Tuff Spun p. 7				Dry only		The best budget anti-fatigue matting available with yellow edging for safety.
Tuff Spun Wear p. 8				Dry only		Added wear layer offers extra comfort and improved durability.
Tuff Spun Deck p. 9				Dry only		Checker plate foam for added traction and puncture resistance.
Zed Land p. 10				Dry only		The ultimate high bounce, long lasting general purpose anti-fatigue mat.
HEAVY DUTY - Strengthened with extra thermally bonded surface matting						
Zed Tred p. 11						Copes with light spillage and debris.
Zed Chex p. 12						Industry standard pattern - available in black.
FOR WHEN THE HEAT IS ON						
Sparksafe p. 13				Dry only		Industrial work and welding stations, repels sparks and hot metal shards.
GENERAL PURPOSE - Suitable for most wet applications						
Heronair p. 14						Cushions against breakages, good general purpose.

F O R T H E C O M F O R T



A M A T F O R

O F S A F E T Y



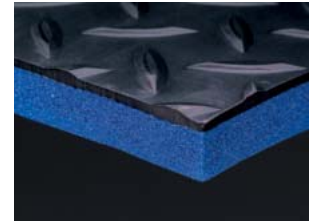
A L L R E A S O N S

Why is anti-fatigue matting important?

Apart from the need for comfort and grip, standing relatively still at a work station can cause circulatory problems leading to increased fatigue, which may result in accidents and/or decreased productivity.

How Plastex anti-fatigue matting works

With its bonded combination of a durable surface and foam backing, Plastex anti-fatigue matting is the ideal mix of safety and comfort. The surface patterns provide varying degrees of grip and drainage to cover the full range of needs from light duty, to heavy industrial use. As well as insulating and softening cold hard floors, the foam backing encourages micro muscle movements that improve blood flow, preventing fatigue and potential long term health issues.



For large and small floor areas

Our matting is available in module and roll format enabling versatile usage:

- Large floor areas
- Runners alongside work stations
- Single modular mats for individual work stations.

For more complex areas, the matting is easy to cut to shape and install.



Runner alongside work station



Work station module mat

Edging Options

Standard length rolls and modules of foam or foam/wear layer combination are supplied with integral edging on all 4 sides.



Integral Edging



PVC Edging



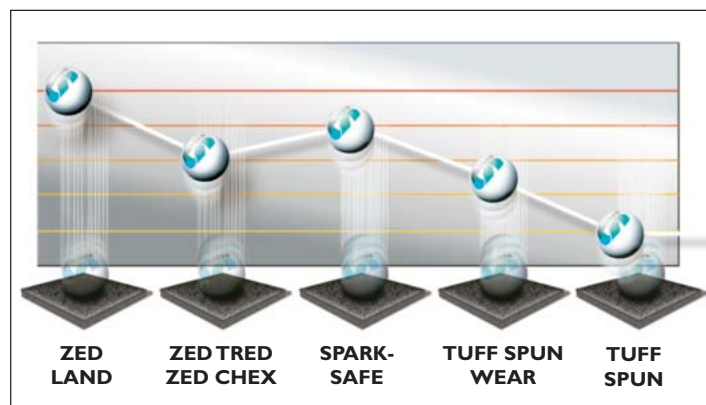
Field Edging

Foam only products (Tuff Spun, Tuff Spun Wear, Tuff Spun Deck and Zed Land) if cut on site and used as part rolls, require PVC edging strips (3/8" or 9/16" heights) to achieve an edging on cut ends.

Dual layer products (Sparksafe, ZedTred and Zed Chex) if cut on site and used as part rolls, require a field edge to be fabricated. Simply cut back and remove the underside foam, so that the top wear layer creates a sloped finish.

The golf ball bounce test

For a low tech version of our bounce test simply hold a golf ball about 1' or so above one of our anti-fatigue mats and let go - the higher the bounce the more resilience and comfort the mat will provide.



TUFF SPUN

An economical anti-fatigue foam matting

REACH compliant closed cell matting in PVC foam composition for light duty use.

A good value, hard working, anti-fatigue matting with a ribbed slip resistant surface, Tuff Spun also reduces impact noise and protects items accidentally dropped.



BENEFITS

Certified wear resistance **ASTM 4060**: <1 gram loss

Good slip resistance

Reduces standing fatigue and underfoot noise and protects items accidentally dropped from damage

Quick to install

FEATURES

Minimal wear standing foam which will not deaden

Ribbed surface

Closed cell PVC foam construction

Supplied in 60' (18m) rolls or standard modules

STANDARD COLORS



BLACK



DARK GRAY



BLACK WITH
YELLOW EDGING



STANDARD SIZES

PRODUCT	HEIGHT	STANDARD ROLL OPTIONS*			STANDARD MODULE OPTIONS*		
Tuff Spun Gray	3/8" (9mm)		3' x 60' (0.91 x 18m)		2' x 3' (0.6 x 0.91m)	3' x 5' (0.91 x 1.5m)	3' x 10' (0.91 x 3m)
Tuff Spun Black	3/8" (9mm)	2' x 60' (0.6 x 18m)	3' x 60' (0.91 x 18m)	4' x 60' (1.22 x 18m)			
Tuff Spun Plus	3/8" (9mm)		3' x 60' (0.91 x 18m)		2' x 3' (0.6 x 0.91m)	3' x 5' (0.91 x 1.5m)	3' x 10' (0.91 x 3m)

*Supplied with integral edging to 4 sides.

TUFF SPUN WEAR

Heavy duty top layer for improved traction

Economical alternative for medium duty applications.

With an increased foam thickness of almost 50% on Tuff Spun, and incorporating a top surface wear layer, Tuff Spun Wear provides extra comfort and improved durability.

The anti-fatigue mat is suitable for most medium duty retail and commercial environments.



BENEFITS

Certified wear resistance **ASTM 4060:** <0.3 gram loss

Good slip resistance

Extra cushion comfort

Quick to install

FEATURES

Heavy duty top layer

Embossed pebble surface

Increased foam thickness

Supplied in 60' (18m) rolls or standard modules

STANDARD COLOR



DARK GRAY



STANDARD SIZES

PRODUCT	HEIGHT	STANDARD ROLL OPTION*	STANDARD MODULE OPTIONS*		
Tuff Spun Wear	9/16" (14mm)	3' x 60' (0.91 x 18m)	2' x 3' (0.6 x 0.91m)	3' x 5' (0.91 x 1.5m)	3' x 10' (0.91 x 3m)

*Supplied with integral edging to 4 sides.

TUFF SPUN DECK

Foam matting with heavy duty deck-top surface

For dry commercial and workplace environments.

Tuff Spun Deck has a wear foam layer for comfort with a checker plate embossed vinyl foam for added traction, abrasion and puncture resistance.



BENEFITS

Certified wear resistance **ASTM 4060:** <0.2 gram loss

Good slip resistance

Extra cushion comfort

Quick to install

FEATURES

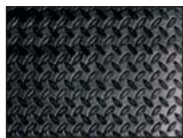
Heavy duty deck-top surface

Embossed surface

9/16" thickness

Supplied in 60' (18m) rolls or standard modules

STANDARD COLOR



BLACK



STANDARD SIZES

PRODUCT	HEIGHT	STANDARD ROLL OPTION*	STANDARD MODULE OPTIONS*		
Tuff Spun Deck	9/16" (14mm)	3' x 60' (0.91 x 18m)	2' x 3' (0.6 x 0.91m)	3' x 5' (0.91 x 1.5m)	3' x 10' (0.91 x 3m)

*Supplied with integral edging to 4 sides.

Patented foam construction with ESD properties

Made from high molecular density foam with 'bounce' properties up to 4 times as effective as standard foam matting for improved comfort and productivity.

Standing employees working on Zed Land will feel better and have improved productivity. Dropped components will also be protected from accidental damage. Zed Land will not deaden and shows minimal wear after 2000 taber abrator cycles in test conditions to ASTM D4060.



BENEFITS

- Certified wear resistance **ASTM 4060: $\leq 1.5\%^{**}$**
- Good slip resistance
- Excellent standing fatigue reducing properties will boost productivity
- Easy to cut to shape and quick to install
- Provides underfoot comfort in static sensitive environments

FEATURES

- Minimal wear standing foam which will not deaden
- Embossed pebble surface
- Patented vinyl foam construction with superior resilience
- Supplied in 60' (18m) rolls or standard modules
- Electrostatic dissipative (ESD) properties
- Certified **ASTM D257: 10^9**

STANDARD COLORS

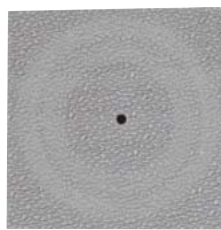


BLUE

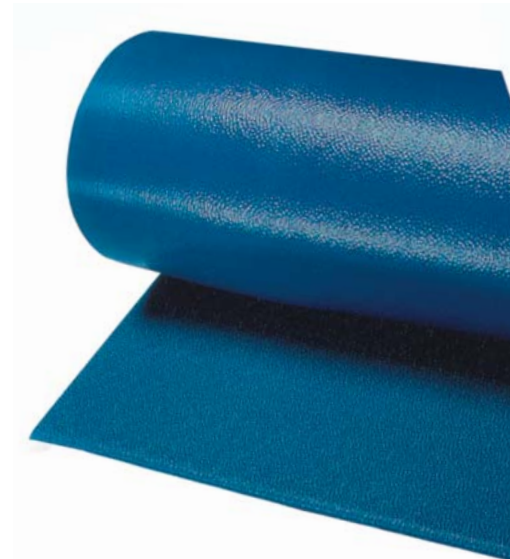


DARK GRAY

Other colors available on request.



**ASTM 4060 @ 2000 cycles



STANDARD SIZES

PRODUCT	HEIGHT	STANDARD ROLL OPTION*	STANDARD MODULE OPTIONS*		
Zed Land	3/8" (9mm)	3' x 60' (0.91 x 18m)	2' x 3' (0.6 x 0.91m)	3' x 5' (0.91 x 1.5m)	3' x 10' (0.91 x 3m)

*Supplied with integral edging to 4 sides.

Heavy duty ribbed surface on a high density foam

Outstanding slip resistance and wear with thermally laminated Zed Land foam that provides excellent anti-fatigue properties.

An exceptional combination of extremely durable Flexi Tred vinyl fused to patented Zed Land anti-fatigue blue foam. This product is manufactured with a very hard wearing slip resistant ribbed surface. Anti-fatigue matting at its most resilient.



BENEFITS

- High wear resistance and resilience
- Extra slip resistance
- Excellent standing fatigue reducing properties will boost productivity
- Easy to cut to shape and quick to install

FEATURES

- Minimal wear standing foam which will not deaden
- Ribbed vinyl surface
- Patented vinyl foam construction with superior resilience
- Supplied in 33' (10m) rolls or standard modules

STANDARD COLORS



BLUE



LIGHT GRAY



STANDARD SIZES

PRODUCT	HEIGHT	STANDARD ROLL OPTION*	STANDARD MODULE OPTIONS*		
Zed Tred	1/2" (13mm)	3'3" x 33' (1 x 10m)	3'3" x 5' (1 x 1.5m)	3'3" x 10'10" (1 x 3.3m)	3'3" x 16'6" (1 x 5m)

*Supplied with integral edging to 4 sides.

Versatile, multi-purpose matting for any workplace

Checker plate vinyl surface on a thermally laminated patented Zed Land high density foam.

Multi-purpose, anti-fatigue matting comprising Zed Land blue foam thermally fused with a robust, slip resistant wear surface in a checker plate design.

Chemical, oil and acid resistant.



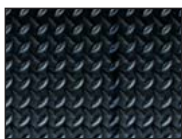
BENEFITS

- High wear resistance and resilience
- Extra slip resistance
- Excellent standing fatigue reducing properties will boost productivity
- Easy to cut to shape and quick to install

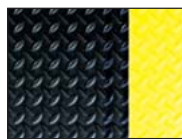
FEATURES

- Minimal wear standing foam which will not deaden
- Checker plate vinyl surface
- Patented vinyl foam construction with superior resilience
- Supplied in 60' (18m) rolls or standard modules

STANDARD COLORS



BLACK



BLACK WITH YELLOW EDGING

Zed Chex Plus with yellow edging to increase visual safety in any area of the workplace.



STANDARD SIZES

PRODUCT	HEIGHT	STANDARD ROLL OPTIONS*		STANDARD MODULE OPTIONS*			
Zed Chex	1/2" (13mm)	3' x 60' (0.91 x 18m)	4' x 60' (1.22 x 18m)	2' x 3' (0.6 x 0.91m)	3' x 5' (0.91 x 1.5m)	3' x 10' (0.91 x 3m)	3' x 20' (0.91 x 6m)
Zed Chex Plus	1/2" (13mm)	3' x 60' (0.91 x 18m)		2' x 3' (0.6 x 0.91m)	3' x 5' (0.91 x 1.5m)	3' x 10' (0.91 x 3m)	3' x 20' (0.91 x 6m)

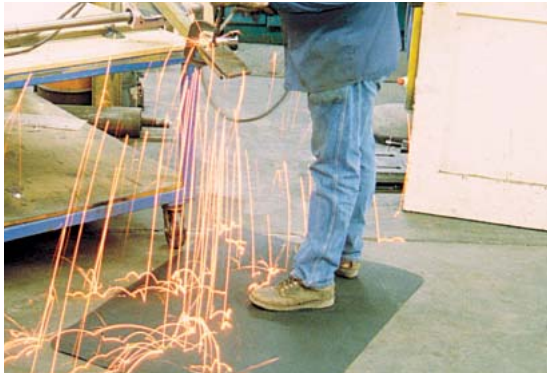
*Supplied with integral edging to 4 sides.

SPARKSAFE

Textured heat repellent rubber top surface on a foam base

Repels sparks and hot metal fragments in industrial workplaces, welding stations, assembly areas, machine shops and wherever heat generating equipment is in use.

For the toughest conditions, when the heat is on, Sparksafe is a two part, all rubber constructed anti-fatigue matting with special heat repellent properties to withstand sparks and hot metal fragments.



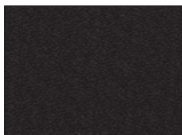
BENEFITS

- High wear resistance and resilience
- Repels sparks and hot metal shards
- Excellent anti-fatigue relief
- Quick to install

FEATURES

- Rubber top with rubber foam backing
- Heat resistant rubber wear layer
- Soft foam base
- Supplied in standard modules

STANDARD COLOR



BLACK

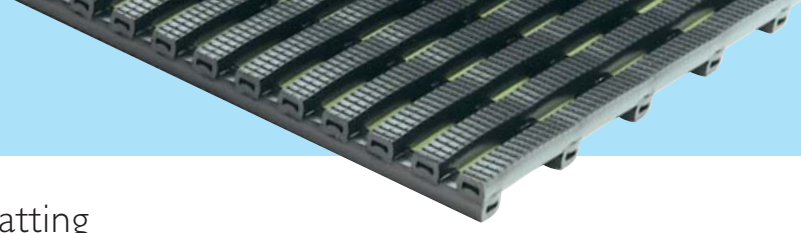


STANDARD SIZES

PRODUCT	HEIGHT	STANDARD MODULE OPTIONS*	
Sparksafe	9/16" (14mm)	2' x 3' (0.6 x 0.91m)	3' x 5' (0.91 x 1.5m)

*Supplied with integral edging to 4 sides.

HERONAIR



An economical anti-fatigue matting

A unique tubular construction matting providing effective anti-fatigue, slip resistance and drainage properties all at the same time.

A widely proven matting solution for light industrial applications where employees are standing in customer service positions, shop and canteen counters, packing lines, warehouses and the like.

Constructed with flexible PVC hollow ribs, hardwearing but lightweight, the matting has the added advantage of dissipating spillages and debris through its 3/8" open grid whilst providing a slip resistant surface.



BENEFITS

Certified slip resistance **DIN 51130: R11 - ASTM 1677: 0.6/0.6**

Excellent drainage **DIN 51130: V10**

Fatigue-reducing and insulating

Chemical, oil and acid resistant

Easy to cut on site, contours to uneven surfaces

Quick to install

Fire resistant

Environmentally-friendly

FEATURES

Etched pattern

Two layer construction

Hollow construction

Non-porous PVC

Made from flexible PVC

Supplied in 33' (10m) rolls

Certified **EN 13501: Cfl - S1**

Made from 100% recycled material

STANDARD COLOR



BLACK

Other colors available on request.



STANDARD SIZES

PRODUCT	HEIGHT	STANDARD ROLL OPTIONS*		
Heronair	3/8" (10mm)	2' x 33' (0.6 x 10m)	3' x 33' (0.91 x 10m)	4' x 33' (1.22 x 10m)

*Contact us for custom dimensions.

Anti-fatigue matting ancillaries

Heronair

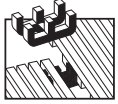


3/8" x 2" x 33'
(10mm x 50mm x 10.1m)

2" PVC edging strip

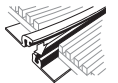
Supplied in rolls of 33' (10.1m) length with cold welding paste.

Colors: Black, Dark Gray



Connector clips - dual purpose

For joining sections of matting together side to side or end to end.



13/32" x 5'11"
(10.5mm x 1.8m)

Snap Track - Low Profile

2 part snap track can be welded to join rolls end to end or side to side for large area covering.

Supplied with cold welding paste.

Color: Dark Gray

Tuff Spun & Zed Land

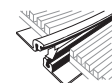


3/8" x 2" x 33'
(10mm x 50mm x 10.1m)

2" PVC edging strip

Supplied in rolls of 33' (10.1m) length with cold welding paste.

Colors: Black, Dark Gray



13/32" x 5'11"
(10.5mm x 1.8m)

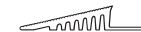
Snap Track - Low Profile

2 part low profile snap track can be welded to join rolls end to end or side to side for large area covering.

Supplied with cold welding paste.

Color: Dark Gray

Tuff Spun Wear & Tuff Spun Deck

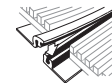


9/16" x 2 1/2" x 33'
(14mm x 60mm x 10.1m)

2 1/2" PVC edging strip

Supplied in rolls of 33' (10.1m) length with cold welding paste.

Colors: Black, Dark Gray



9/16" x 8'2"
(14mm x 2.5m)

Snap Track

2 part snap track can be welded to join rolls end to end or side to side for large area covering.

Supplied with cold welding paste.

Color: Dark Gray

For large and small floor areas

Our matting is available in module and roll format enabling versatile usage:

- Large floor areas
- Runners alongside work stations
- Single modular mats for individual work stations.

For more complex areas, the matting is easy to cut to shape and install.



Runner alongside work station



Work station module mat

Edging Options

Standard length rolls and modules of foam or foam/wear layer combination are supplied with integral edging on all 4 sides.

Foam only products (Tuff Spun, Tuff Spun Wear, Tuff Spun Deck and Zed Land) if cut on site and used as part rolls, require PVC edging strips (3/8" or 9/16" heights) to achieve an edging on cut ends.

Dual layer products (Sparksafe, ZedTred and Zed Chex) if cut on site and used as part rolls, require a field edge to be fabricated. Simply cut back and remove the underside foam, so that the top wear layer creates a sloped finish.



Integral Edging



PVC Edging



Field Edging



We make our matting, and that makes all the difference

When you purchase Plastex matting you're also investing in our extensive know-how that comes from over 55 years of designing, testing and manufacturing matting solutions for a diverse range of applications; knowledge we apply to make sure we find exactly the right solution for you.

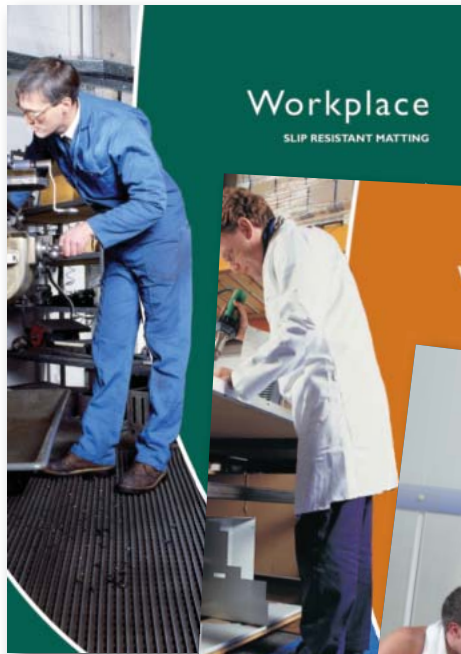
This is important as an incorrectly specified product may actually increase risk. For example using a mat designed for bare feet in a workplace area could potentially increase slip accidents. That's why simply picking a product from a web page may not deliver the correct solution.

Talk to Us

To make sure you get the right mat for the right reasons, talk to us and our distributors.

The 45+ products within the Plastex range of matting and flooring offer **"a mat for all reasons"**.

To make it easier for you to choose the right mat for the right reason, we've divided our range into the sections below. Simply pick the section that best suits your need, and then use the segmentation chart you'll find at the front of each section to help you make your final choice.



Workplace ANTI-FATIGUE MATTING	
Product Index	
Heronair	14
Sparksafe	13
Tuff Spun	7
Tuff Spun Deck	9
Tuff Spun Wear	8
Zed Chex	12
Zed Land	10
Zed Tred	11

Full Manufacturer Warranty - Another good reason to choose Plastex

All Plastex flooring and matting products will give excellent and long service. In the unlikely event a Plastex product has a defect in workmanship, we offer a full refund or replacement warranty. The warranty periods vary depending on the product, please view full terms and details at www.plastexmatting.com/warranty-policy.html



www.plastexmatting.com

Plastic Extruders Ltd.

Russell Gardens, Wickford,
Essex SS11 8DN, England

Tel: +44 (0) 1268 571116

Plastex Matting, Inc.

120 55th Street NE
Fort Payne, AL 35967 USA

Tel: +1 256 845 7725

