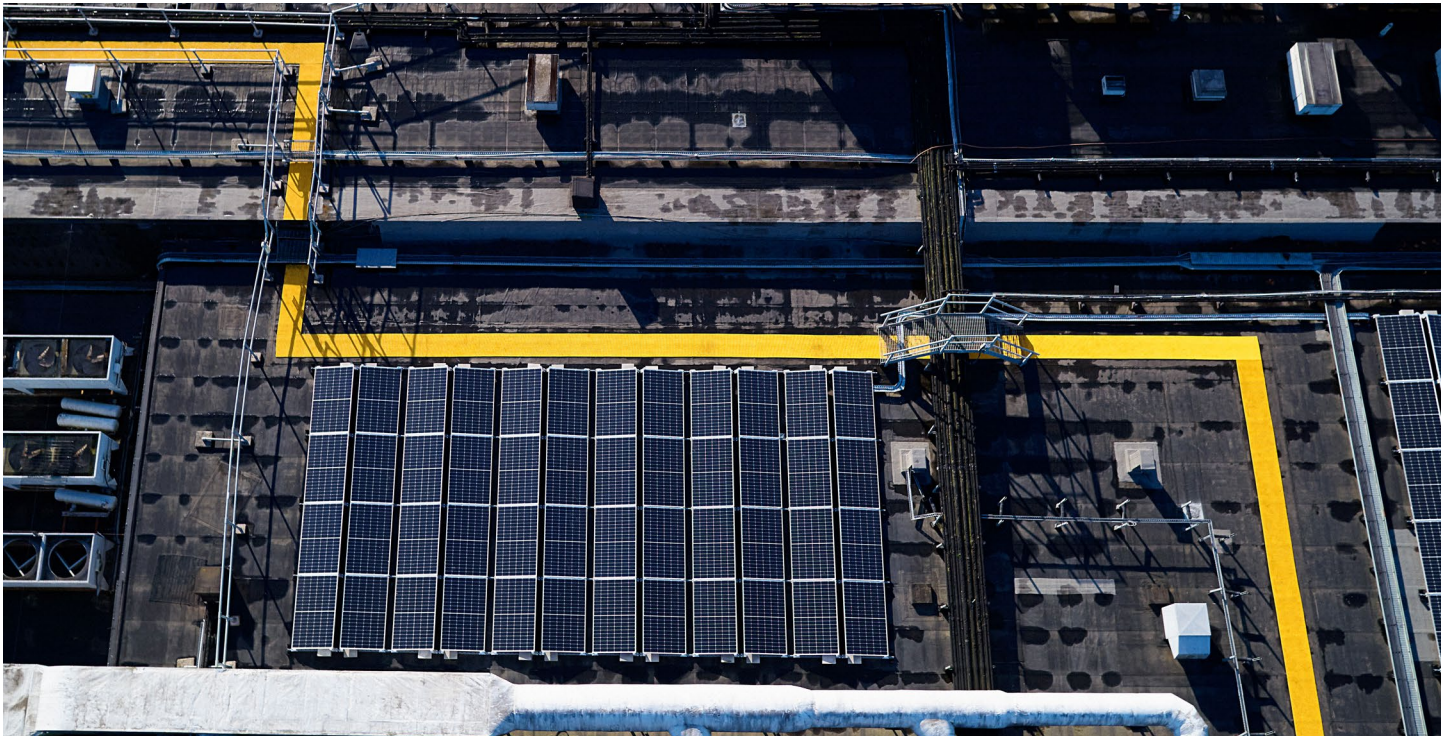


Crossgrip® 20/20



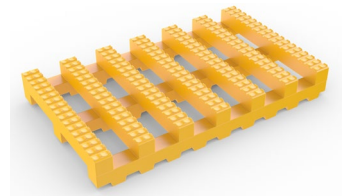
Specialized flat roof walkway system with a superior four-way drainage system, enhanced slip resistance and 10-year warranty



Introducing Crossgrip 20/20, an external safety walkway system that combines all the best features of Crossgrip with an added four-way drainage system, enhanced slip resistance and an unbeatable 10-year warranty.

Crossgrip 20/20 has a redesigned base bar that boasts a superior four-way drainage system, plus a revamped top bar featuring a deeper cut for slip resistance (R11) underfoot. The addition of improved UV weatherability and a 10-year warranty means Crossgrip 20/20 offers unparalleled performance, even in the most adverse conditions.

The durable, welded construction contours to the roof structure to help protect the roof surface from any potential damage, while the cross-directional top ribs ensure a firm grip underfoot.



Features:



Deep-cut pattern



Two-layer construction and channelled underbars



Flexible, one-piece construction



Loose lay, no fixing required



Supplied in 33' (10m) rolls



Benefits:



Certified slip resistance (ASTM E303 78-90 / 63-71)



Four-way drainage (DIN 51130:V10)



Contours to any surface



Stable in winds up to 60 mph/hr



Quick to install and move if needed



Plastex Matting Inc.

120 55th St NE
Fort Payne, AL 35967
+1 256 845 7725

USA + UK manufactured matting products:
plastexmatting.com



Crossgrip® 20/20

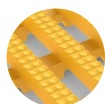
Data sheet



Standard sizes:

| | |
|-----------------------|---------------------------------------|
| Product | Crossgrip 20/20 |
| Height | 9/16" (14mm) |
| Standard roll options | 33' x 2' (10 x 0.6m) |
| | 33' x 3' (10 x 0.91m) |
| | 33' x 4' (10 x 1.22m) |
| Weight | 1.2 lb/sq.ft (5.8 kg/m ²) |

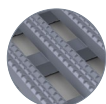
Standard colors:



Yellow



White



Light gray



More colors
available
upon request

Installation:

Crossgrip 20/20's one-piece construction means installation is simple:

- Loose lay, no fixing required
- Durable, one-piece construction
- Supplied in 10m rolls; simply cut to fit on site

Cleaning:

Keeping Crossgrip 20/20 looking good is easy:

- Simply lift or roll to clean
- Easy to clean with a high pressure hose

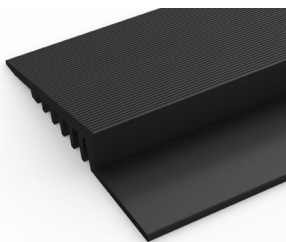
Technical information:

| | |
|------------------------|---|
| Acoustic | Excellent sound absorption |
| Chemical | Resistant to most acids, alkalines and oils. You can read more about specific chemical resistances by downloading this information sheet . |
| Composition | Flexible Polyvinyl Chloride (PVC) |
| Drainage | DIN 51130:V10 |
| Environment | Crossgrip 20/20 is 100% recyclable. We don't use any substances included in the SVHC list under REACH in any of our matting products. |
| Fire | EN ISO 13501 - I :2007 - Cf1 - S1 |
| Hygiene | Made from non-porous PVC that's naturally resistant to bacteria growth. |
| Reversion | Thermoplastic shrinkage can result in size reductions up to 2%. This may be accelerated in hot environments. You can read more about the causes of shrinkage by downloading this information sheet . |
| Slip resistance | DIN 51130:R11 ASTM E303 Dry/Wet with lines along-lines across 78-90 / 63-71 |
| Thermal | Designed to function at temperatures from -23°C and up to +60°C. Slight size variation may occur at temperature extremes. |
| UV light | Resistant to PVC degradation |
| Warranty | Ten years. The product will remain functional and will not degrade in such a manner as to cause leaks in the PVC roof membrane. Visit our policies page for more information about warranties. |
| Wind resistance | Crossgrip 20/20 remains stable in winds up to 60mph (96km/h). Tests at PRI Construction Materials Technologies LLC in Florida showed Crossgrip 20/20 when laid flat on a stable platform remained in position for wind speeds of 125mph (200 km/h). |

Ancillaries:

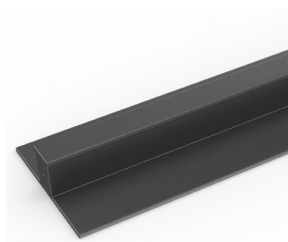
> Crossgrip 20/20

PVC edging (H: 9/16, W: 2 1/2")



Supplied in rolls of 33' (10.1m) length with cold welding paste. Comes in black, dark gray and yellow. Size: 9/16" x 2 1/2" x 33' (14mm x 100mm x 10.1m)

PVC snap track (H: 9/16")



Two-part snap track that can be welded together to join rolls end-to-end or side-to-side to cover large areas. Comes in black and dark gray. Size: 9/16" x 8'2" (14mm x 2.5m)

Connector clips: dual purpose (H: 9/16")



For joining sections of matting together side-to-side or end-to-end. Supplied in packs of 10