

Crossgrip PVC

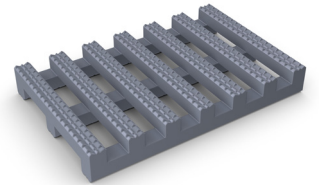


Two-layer roof walkway matting for safety and comfort underfoot.



A highly specialized walkway matting for flat roofs, gentries and high level walkways, Crossgrip PVC is certified slip resistant and able to withstand all types of weather.

Made from flexible PVC, it's designed to be loose laid with no fixing required, so can be installed quickly and easily, even in adverse weather conditions. The durable, two-layer construction contours to the roof structure and protects the membrane, while the diamond-cut pattern and cross-directional top ribs ensure a firm underfoot grip. It remains stable in winds up to 60mph/hr (96km).



Features:



Diamond-cut pattern



Two-layer construction



Flexible, one-piece construction



Loose lay, no fixing required



Supplied in 33' (10m) rolls



Benefits:



Certified slip resistance (DIN 51130:R10; ASTM 1677: 1.0/0.9)



Excellent drainage (DIN 51130:V10)



Contours to roof structure and protects the membrane



Stable in winds up to 60mph/hr (96km)



Quick to install



Plastex Matting Inc.

120 55th St NE
Fort Payne, AL 35967
+1 256 845 7725

USA + UK manufactured matting products:
plastexmatting.com

Data sheet

Standard sizes:

Product	Crossgrip PVC
Height	9/16" (14mm)
Standard roll options	33' x 2' (10 x 0.6m)
	33' x 3' (10 x 0.91m)
	33' x 4' (10 x 1.22m)
Weight	1.3 lb/sq.ft (6.6 kg/m ²)

Tolerances:

	Height (+/- 0.05")	Length (0+1.0')	Width (+/- 1/2")
Crossgrip PVC	9/16"	33'	2' 3' 4'

Technical information:

Acoustic	Excellent sound absorption
Chemical	Resistant to most acids, alkalines and oils. You can read more about specific chemical resistances by downloading this information sheet .
Composition	Flexible Polyvinyl Chloride (PVC)
Environment	Crossgrip PVC is 100% recyclable. When manufactured in black, it's made using our post industrial recycled material. The recycled content averages at least 30%, but we strive for 100% wherever possible. We don't use any substances included in the SVHC list under REACH in any of our matting products.
Flammability	UL 94 HB Self Extinguished (material ignited but stopped burning prior to reaching the timing zone) / No Burn Rate. UL 214 self extinguished but did not reach the burn point
Hygiene	Made from non-porous PVC that's naturally resistant to bacteria growth.
Reversion	Thermoplastic shrinkage can result in size reductions up to 2%. This may be accelerated in hot environments. You can read more about the causes of shrinkage by downloading this information sheet .
Slip resistance	ASTM F 1677 - Dry/Wet: 1.0/0.9 DIN 51130: R10, V10
Thermal	Designed to function at temperatures from -9°F and up to +140°F. Slight size variation may occur at temperature extremes.
UV light	Resistant to PVC degradation

Installation:

Crossgrip PVC's one-piece construction means installation is simple:

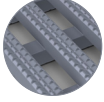
- Loose lay, no fixing required
- Durable, one-piece construction
- Supplied in 33' rolls; simply cut to fit on site
- Contours to the roof structure

Cleaning:

Keeping Crossgrip PVC looking good is easy:

- Simply lift or roll to clean
- Easy to clean with a high pressure hose

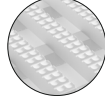
Colors:



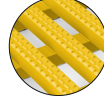
Light gray



Black



White



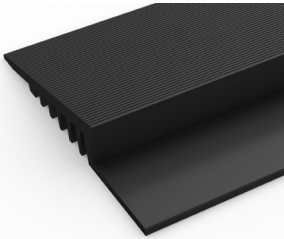
Yellow

More colors
available
upon request

Ancillaries:

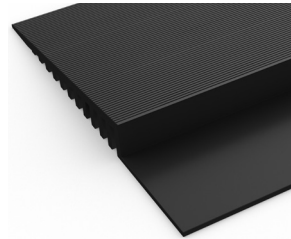
> Crossgrip PVC

PVC edging (H: 9/16", W: 2 1/2")



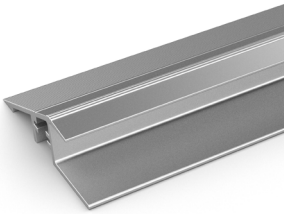
Supplied in rolls of 33' (10.1m) length with cold welding paste. Comes in black, dark gray and yellow. Size: 9/16" x 3 3/4" x 33' (14mm x 100mm x 10.1m)

PVC edging (H: 9/16", W: 3 3/4")



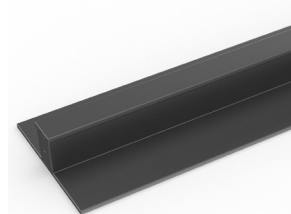
Supplied in rolls of 33' (10.1m) length with cold welding paste. Comes in black, dark gray and yellow. Size: 9/16" x 3 3/4" x 33' (14mm x 100mm x 10.1m)

Aluminum edging (H: 9/16")



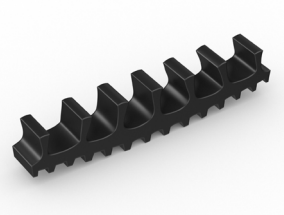
Supplied in sections of 6'6" (2m) length with fixing screws and plugs. Comes in anodized aluminum and powder coated yellow. Size: 5/8" x 1 13/16" x 6'6" (14mm x 45mm x 2m)

PVC snap track (H: 9/16")



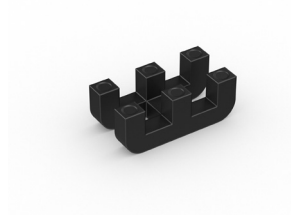
Two-part snap track that can be welded together to join rolls end-to-end or side-to-side to cover large areas. Comes in black and dark gray. Size: 9/16" x 8'2" (14mm x 2.5m)

Connector clips: side-to-end (H: 9/16")



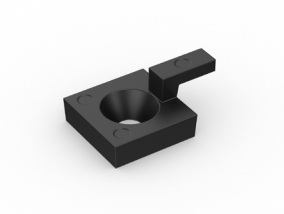
For joining sections of matting together side-to-end. Supplied in packs of 10

Connector clips: dual purpose (H: 9/16")



For joining sections of matting together side-to-side or end-to-end. Supplied in packs of 10

Small floor hook (H: 9/16")



For securing sections of the matting to the floor. Supplied in packs of 20 with screws and plugs