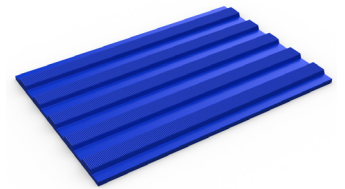


Heavy-duty matting with a textured surface that insulates from electrical shock.



Our bestselling electrical insulation matting, Flexi Tred is designed for workplaces where there's a risk of electrical shock and comfort is needed underfoot.

With a breakdown voltage of 27kV, Flexi Tred not only provides electrical resistance, but also withstands high levels of electrical interference. The textured rib surface is hard-wearing, easy to clean and provides good slip resistance. It's also naturally resistant to acids, chemicals and oils, making it the ideal matting for manufacturing and production areas, as well as commercial environments where there's a high level of pedestrian traffic.



Features:



Textured, broad-rib surface



Breakdown voltage of 27kV



Hard-wearing vinyl sheets



Made from flexible PVC



Supplied in a convenient roll format



Benefits:



Good slip and wear resistance



Insulates from electrical shock



Resistant to chemicals, acids and oils



Easy to cut to fit on site; contours to the subfloor



Quick to install



Plastic Extruders Ltd.

Russell Gardens, Wickford
Essex, SS11 8DN
+44 (0) 1268 571 116

UK + USA manufactured matting products:
plastexmatting.com



Standard sizes:

Product	Flexi Tred
Height	4mm (5/32")
Standard roll options	10 × 1m (33' × 3'3")
Weight	4.2kg/m ² (0.86lb/sq.ft)

Tolerances:

	Height (+/- 0.5mm)	Length (0+0.3m)	Width (+/- 1cm)
Flexi Tred	4 mm	10 m	100 cm

All dimensions are nominal

Technical information:

Chemical	Resistant to most acids, alkalines and oils. You can read more about specific chemical resistances by downloading this information sheet .
Composition	Flexible Polyvinyl Chloride (PVC)
Environment	Flexi Tred is 100% recyclable. We don't use any substances included in the SVHC list under REACH in any of our matting products.
Electrical	BS 2782: Part 2 Method 230A Insulation resistance > 2000M Ω Electric strength = 20,000 volts DIN 60243-1 (VDE 0303 part 21): 1999-03 Breakdown voltage: 27.050 kV eff
Fire	UL 94. Horizontal burning test. Classification 94HB
Reversion	Thermoplastic shrinkage can result in size reductions up to 2%. This may be accelerated in hot environments. You can read more about the causes of shrinkage by downloading this information sheet .
Thermal	Designed to function at temperatures from -23°C and up to +60°C. Slight size variation may occur at temperature extremes.
UV light	Resistant to PVC degradation.
Warranty	Two years. Visit our policies page for more information about warranties

Installation:

Flexi Tred's one-piece construction means installation is simple:

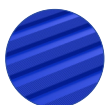
- Supplied in convenient roll format
- Easy to cut to size and shape
- Contours to the sub floor

Cleaning:

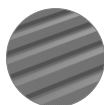
Keeping Flexi Tred looking good is easy:

- Easy to clean with a vacuum or mop
- No special cleaning tools needed

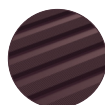
Colours:



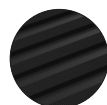
Blue



Light grey



Brown



Black

More colours
available
upon request