

Frontrunner® Brush Wide



Entrance matting with brush inserts and an extra-wide grid designed for trapping large debris.



Large debris is no match for Frontrunner Brush Wide, a hard-wearing entrance mat specifically designed to trap stones, snow, ice and mud.

Heavy-duty brush strips with bristles scrape shoes clean, while the extra wide open grid traps and collects the large debris, preventing it from being walked inside. Frontrunner Brush Wide works either as a standalone entrance mat, or can be interchanged with another Frontrunner system, like Frontrunner Brush or Frontrunner XT, in the summer months.



Features:



Diamond cut pattern



Two layer open-grid construction



Nylon brush inserts



Comes in 33' (10m) rolls or modules



Made from flexible PVC



Benefits:



Slip resistant, high soil removal



Excellent drainage



Scrapes shoes clean



Seamless installation



Easy to cut to fit on site, contours to uneven surfaces



Plastex Matting Inc.

120 55th St NE
Fort Payne, AL 35967
+1 256 845 7725

USA + UK manufactured matting products:
plastexmatting.com

Data sheet

Standard sizes:

Product	Frontrunner Brush Wide
Height	9/16" - 3/4" (14 - 19mm)
Standard roll options	33' x 2' (10 x 0.6m) 33' x 3' (10 x 0.91m) 16'6" x 4' (5 x 1.2m)
Standard module options	2'7" x 4' (0.8 x 1.2m) 3'3" x 4'11" (1 x 1.5m) 3'7" x 6'7" (1.1 x 2m)
Weight	1.6 lb/sq.ft (7.8 kg/m ²)

Surface modules are supplied with factory fitted PVC ramped edging to four sides.

Tolerances:

	Height (+/- 0.05")	Length (0+1.0')	Width (+/- 1/2")
Frontrunner Brush Wide	9/16" - 3/4" 9/16" - 3/4"	33' 16'6"	2' 3' 4'

All dimensions are nominal

PVC grid technical information:

Acoustic	Excellent sound absorption
Chemical	Resistant to most acids, alkalines and oils. You can read more about specific chemical resistances by downloading this information sheet
Composition	Flexible Polyvinyl Chloride (PVC)
Environment	Our Frontrunner range qualifies for LEED IEQ Credit 5, and when produced in black or gray, Frontrunner may also qualify for LEED MR Credit 4. We don't use any substances included in the SVHC list under REACH in any of our matting products.
Fire	Nylon brush fibres: UL94 - V2
Reversion	Thermoplastic shrinkage can result in size reductions up to 2%. This may be accelerated in hot environments. You can read more about the causes of shrinkage by downloading this information sheet .
Thermal	Designed to function at temperatures from -9°F and up to +140°F. Slight size variation may occur at temperature extremes.
UV light	Resistant to PVC degradation
Warranty	Two years. Visit our policies page for more information about warranties

Nylon brush inserts technical information:

Construction	Aligned tufting
Bristle diameter	3/256"
Insert thickness	15/32"
Bristle content	Nylon 6.6 Monofilaments.
Bristle height	15/32"
Backing	PVC

Frontrunner® Brush Wide

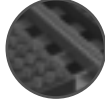


Product data sheet

Colors:



Black



Dark gray

More colors
available
upon request

Installation:

Frontrunner Brush Wide's one-piece construction means installation is simple:

- No special tools or previous site visits
- Fits with different well depths
- Contours to the floor

[Watch](#) or download the [recessed entrance matting installation instructions](#) and the [surface-mounted installation instructions](#).

Cleaning:

Keeping Frontrunner Brush Wide looking good is easy:

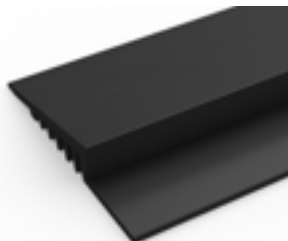
- Reduces cleaning intervals
- Simply roll or lift to clean
- No special tools needed
- Easy to clean using a vacuum, plus a coarse brush for clearing the debris in the grid

[Watch](#) or [download](#) the the cleaning instructions.

Ancillaries:

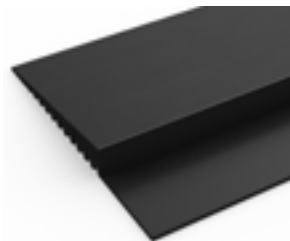
> For surface mounted installations: Frontrunner Brush Wide

PVC edging (H: 9/16, W: 2 1/2")



Supplied in rolls of 33' (10.1m) length with cold welding paste. Comes in black, dark gray, dark brown, holly green, Oxford blue, yellow. Size: 9/16" x 2 1/2" x 33' (14mm x 60mm x 10.1m)

PVC edging (H: 9/16, W: 3 3/4")



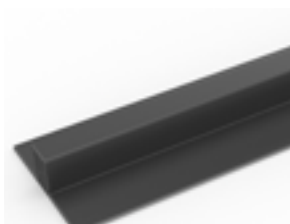
Supplied in rolls of 33' (10.1m) length with cold welding paste. Comes in black, dark gray and yellow. Size: 9/16" x 3 3/4" x 33' (14mm x 100mm x 10.1m)

Aluminum edging (H: 9/16")



Supplied in sections of 6'6" (2m) length with fixing screws and plugs. Comes in anodized aluminum and powder coated yellow. Size: 9/16" x 1 13/16" x 6'6" (14mm x 45mm x 2m)

PVC snap track (H: 9/16")



Two-part snap track that can be welded together to join rolls end-to-end or side-to-side to cover large areas. Supplied with cold welding paste. Comes in dark gray. Size: 9/16" x 8'2" (14mm x 2.5m)

Product data sheet

Ancillaries:

> For recessed installations: Frontrunner Brush Wide

R frame (H: 9/16")



You'll need these to secure the matting on the left-to-right edges. Supplied in sections of 10' (3m) length with fixing screws and plugs. Comes in anodized aluminum, powder coated dark gray and black. Size: 9/6" x 15/32" (14mm x 12mm)

J frame (H: 1 1/16")



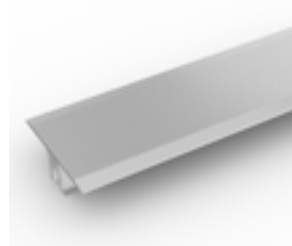
Installing Frontrunner against a wall? You'll need a J frame to secure the matting on the left-to-right edges. Supplied in sections of 10' (3m) length with fixing screws and plugs. Comes in dark gray and black. Size: 1 1/16" x 2 3/8" (18mm x 60mm)

T frame (H: 9/16")



You can use a T frame (1") to divide the matting into sections left-to-right – this makes it easier to lift and clean. Supplied in sections of 10' (3m) length with fixing screws and plugs. Comes in anodized aluminum, powder coated dark gray and black

TL frame (H: 9/16")



You can use a T/L frame (2") to divide the matting into sections left-to-right – this makes it easier to lift and clean. Supplied in sections of 10' (3m) length with fixing screws and plugs. Comes in anodized aluminium

L frame (H: 5/8")



Installing around a circular door or non rectangular space? You'll need a L frame to secure the matting. Size: 5/8" x 8' (15mm x 2.7m length)

U section (H: 9/16")



If the front-to-back dimension of the mat well is greater than the final width of your matting, you may need a U section to secure the different sections together. Supplied in sections of 10' (3m) length, with fixing screws and plugs. Comes in anodized aluminum, powder coated dark gray and black. Size: 9/16" x 3/4" (14mm x 19mm)

H section (H: 9/16")



If the front-to-back dimension of the mat well is greater than the final width of your matting, you may need a H section to secure the different sections together. Supplied in sections of 10' (3m) length, with fixing screws and plugs. Comes in black, with mat insert colour specified. Size: 9/16" x 15/32" (14mm x 12mm)