

Frontrunner® Walk

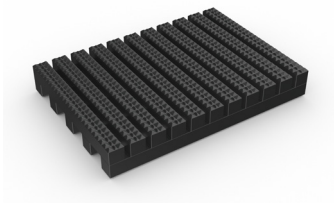


One-piece entrance mat designed for narrower building entrances and longer walkways.




Frontrunner Walk is a one-piece entrance mat designed for narrower building entrances and longer walkways, both indoors and out.

Heel-proof and wheel-proof with excellent rolling resistance, this durable mat can be installed as a surface-mounted entrance mat or loose laid for a roll-and-go slip resistant solution. The clever design features a diamond-cut pattern and cross-directional top ribs to ensure a firm grip underfoot, while simultaneously scraping shoes and wheels clean.




The one-piece construction means the mat can be quickly rolled out where needed or cut to fit on site – no previous site visits required.


Features:




Diamond cut pattern




Two layer open-grid construction



Close mesh grid




Made from flexible PVC




Comes in 6m (20') rolls




Benefits:




Certified slip resistant
(DIN 51130:R11, ASTM I677:0.6/0.6)




Excellent drainage
(DIN 51130:V10)



Wheel-and-heel proof



Easy to cut on site, contours to uneven surfaces



Seamless installation



Plastic Extruders Ltd.

Russell Gardens, Wickford
Essex, SS11 8DN
+44 (0) 1268 571 116

UK + USA manufactured
matting products:
plastexmatting.com



Data sheet

Standard sizes:

Product	Frontrunner Walk
Height	10mm (3/8")
Standard roll options	0.91 x 6m (3' x 20')
	1.22 x 6m (4' x 20')
Weight	8 kg/m ² (17.7 lbs/sq.ft)

Tolerances:

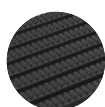
	Height (+/- 0.5mm)	Length (0+3mm)	Width (0+2mm)
Frontrunner Walk	10 mm	6 m	91 cm 122 cm

All dimensions are nominal

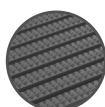
Technical information:

Acoustic	Excellent sound absorption
Chemical	Resistant to most acids, alkalines and oils. You can read more about specific chemical resistances by downloading this information sheet
Composition	Flexible Polyvinyl Chloride (PVC)
Environment	Frontrunner Walk is 100% recyclable. We don't use any substances included in the SVHC list under REACH in any of our matting products.
Fire	EN ISO 13501-1:2007-Bfl-S1, ASTM E648, Class I
Reversion	Thermoplastic shrinkage can result in size reductions up to 2%. This may be accelerated in hot environments. You can read more about the causes of shrinkage by downloading this information sheet .
Slip resistance	DIN 51130: R11, V10
Thermal	Designed to function at temperatures from -23°C and up to +60°C. Slight size variation may occur at temperature extremes.
UV light	Resistant to PVC degradation
Warranty	Four years. Visit our policies page for more information about warranties

Colours:



Black



Dark grey

More colours
available
upon request

Installation:

Fronrunner Walk's one-piece construction means installation is simple:

- Loose lay, no fixing required
- Durable, one-piece construction
- Supplied in 6m rolls; simply cut to fit on site
- Contours to the floor

Cleaning:

Keeping Fronrunner Walk looking good is easy:

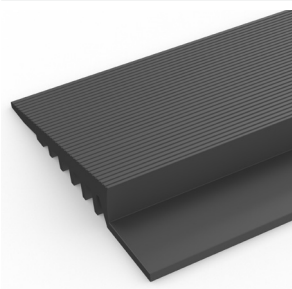
- Simply roll or lift to clean
- No special tools needed
- Easy to clean using a vacuum, plus a coarse brush for clearing the debris in the grid

[Watch](#) or [download](#) the cleaning instructions.

Ancillaries:

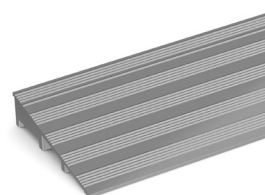
> For surface mounted installations

PVC edging (H: 10mm, W: 50mm)



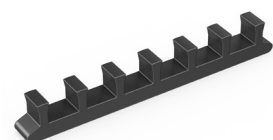
Supplied in rolls of 10.1m (33') length. One tube of cold welding paste recommended for every 10m of edging. Comes in black and dark grey. Size: 10mm x 50mm x 10.1m (3/8" x 2" x 33')

Aluminium ramp (H: 10mm, W: 45mm)



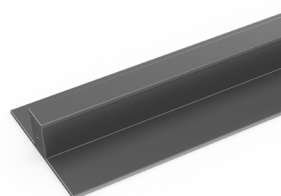
Supplied in sections of 1.98m (6'5") length with fixing screws. Comes in anodised aluminium. Size: 10mm x 45mm x 1.98m (3/8" x 1 3/4" x 6'5")

Connector clips: side-to-side (H: 10mm)



For joining sections of matting together end-to-end. Supplied in packs of 10

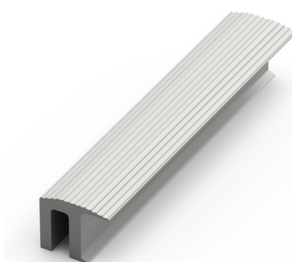
PVC snap track (H: 10.5mm)



Two-part snap track that can be welded together to join rolls end-to-end or side-to-side to cover large areas. We recommend one tube of cold welding paste for every 10m of edging. Comes in dark grey. Size: 10.5mm x 2.5m (13/32" x 8'2")

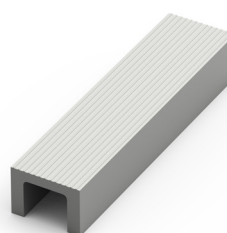
> For recessed installations

R frame (H: 10mm)



You'll need these to secure the matting on the left-to-right edges. Supplied in sections of 3m (10') length with fixing screws and plugs. Comes in anodised aluminium, powder coated dark grey and black. Size: 10mm x 12mm (3/8" x 15/32")

U section (H: 10mm)



If the front-to-back dimension of the mat well is greater than the final length of your matting, you may need a U section to secure the different sections together. Supplied in sections of 3m (10') length, with fixing screws and plugs. Comes in anodised aluminium, powder coated dark grey and black. Size: 10mm x 18mm (3/8" x 11/16")