

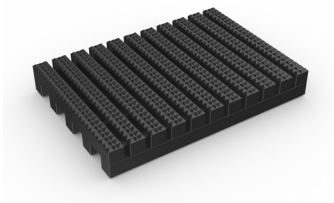
One-piece entrance mat designed for narrower building entrances and longer walkways.




Frontrunner Walk is a one-piece entrance mat designed for narrower building entrances and longer walkways, both indoors and out.

Heel-proof and wheel-proof with excellent rolling resistance, this durable mat can be installed as a surface-mounted entrance mat or loose laid for a roll-and-go slip resistant solution. The clever design features a diamond-cut pattern and cross-directional top ribs to ensure a firm grip underfoot, while simultaneously scraping shoes and wheels clean.


The one-piece construction means the mat can be quickly rolled out where needed or cut to fit on site – no previous site visits required.




Features:




Diamond cut pattern




Two layer open-grid construction



Close mesh grid




Made from flexible PVC




Comes in 20' (6m) rolls



Benefits:




Certified slip resistant
(DIN 51130:R11, ASTM I677:0.6/0.6)




Excellent drainage
(DIN 51130:V10)



Wheel-and-heel proof



Easy to cut on site, contours to uneven surfaces



Seamless installation



Plastex Matting Inc.

120 55th St NE
Fort Payne, AL 35967
+1 256 845 7725

USA + UK manufactured
matting products:
plastexmatting.com

Standard sizes:

Product	Fronrunner Walk
Height	3/8" (10mm)
Standard roll options	3' x 20' (0.91 x 6m) 4' x 20' (1.22 x 6m)
Weight	17.7 lbs/sq.ft (8 kg/m ²)

Tolerances:

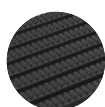
	Height (+/- 0.05")	Length (0+1.0')	Width (+/- 1/2")
Fronrunner Walk	9/16"	33'	2' 3' 4'

All dimensions are nominal

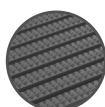
Technical information:

Acoustic	Excellent sound absorption
Chemical	Resistant to most acids, alkalines and oils. You can read more about specific chemical resistances by downloading this information sheet
Composition	Flexible Polyvinyl Chloride (PVC)
Environment	Fronrunner Walk is 100% recyclable. Our Fronrunner Entrance matting system qualifies for LEED IEQ Credit 5, and when produced in black or gray, our Fronrunner range may also qualify for LEED MR Credit 4. We don't use any substances included in the SVHC list under REACH in any of our matting products.
Fire	EN ISO 13501-1:2007-Bfl-S1, ASTM E648, Class I
Reversion	Thermoplastic shrinkage can result in size reductions up to 2%. This may be accelerated in hot environments. You can read more about the causes of shrinkage by downloading this information sheet .
Slip resistance	ASTM F 1677- Dry/Wet: 0.6/0.6 DIN 51130: R11, V10
Thermal	Designed to function at temperatures from -9°F and up to +140°F. Slight size variation may occur at temperature extremes.
UV light	Resistant to PVC degradation
Volatile organic compound (VOC)	CDPH/EHLB Standard Method VI.2-2017 (California Section 01350) - School Classroom: PASS CDPH/EHLB Standard Method VI.2-2017 (California Section 01350) - Office: PASS Measured concentration of Total Volatile Organic Compounds (TVOC): Less than/equal to 0.5 mg/m ³ (in compliance with CDPH/EHLB Standard Method VI.2-2017)
Warranty	Four years. Visit our policies page for more information about warranties

Colors:



Black



Dark gray

More colors
available
upon request

Installation:

Frontrunner Walk's one-piece construction means installation is simple:

- Loose lay, no fixing required
- Durable, one-piece construction
- Supplied in 6m rolls; simply cut to fit on site
- Contours to the floor

Cleaning:

Keeping Frontrunner Walk looking good is easy:

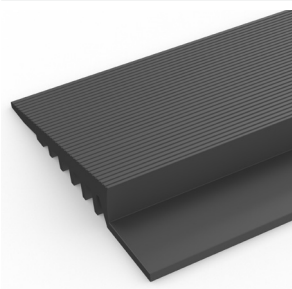
- Simply roll or lift to clean
- No special tools needed
- Easy to clean using a vacuum, plus a coarse brush for clearing the debris in the grid

[Watch](#) or [download](#) the cleaning instructions.

Ancillaries:

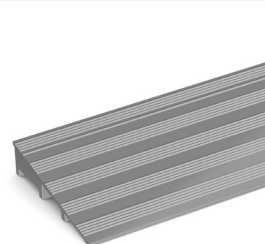
> For surface mounted installations

PVC edging (H: 3/8", W: 2")



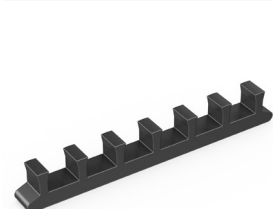
Supplied in rolls of 33' (10.1m) length. One tube of cold welding paste recommended for every 33' of edging. Comes in black and dark gray. Size: 3/8" x 2" x 33' (10mm x 50mm x 10.1m)

Aluminum ramp (H: 3/8", W: 1 3/4")



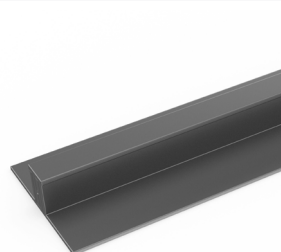
Supplied in sections of 6'5" (1.98m) length with fixing screws. Comes in anodised aluminum. Size: 3/8" x 1 3/4" x 6'5" (10mm x 45mm x 1.98m)

Connector clips: side-to-side (H: 3/8")



For joining sections of matting together end-to-end. Supplied in packs of 10

PVC snap track (H: 1 3/32")



Two-part snap track that can be welded together to join rolls end-to-end or side-to-side to cover large areas. We recommend one tube of cold welding paste for every 33' of edging. Comes in dark gray. Size: 1 3/32" x 8'2" (10.5mm x 2.5m)

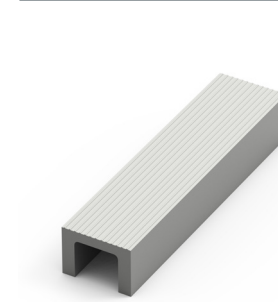
> For recessed installations

R frame (H: 3/8")



You'll need these to secure the matting on the left-to-right edges. Supplied in sections of 10' (3m) length with fixing screws and plugs. Comes in anodised aluminum, powder coated dark gray and black. Size: 3/8" x 1 5/32" (10mm x 12mm)

U section (H: 3/8")



If the front-to-back dimension of the mat well is greater than the final length of your matting, you may need a U section to secure the different sections together. Supplied in sections of 10' (3m) length, with fixing screws and plugs. Comes in anodised aluminum, powder coated dark gray and black. Size: 3/8" x 1 1/16" (10mm x 18mm)