

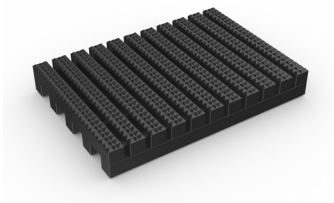
One-piece entrance mat designed for narrower building entrances and longer walkways.




**Gateway Walk is a one-piece entrance mat designed for narrower building entrances and longer walkways, both indoors and out.**

Heel-proof and wheel-proof with excellent rolling resistance, this durable mat can be installed as a surface-mounted entrance mat or loose laid for a roll-and-go slip resistant solution. The clever design features a diamond-cut pattern and cross-directional top ribs to ensure a firm grip underfoot, while simultaneously scraping shoes and wheels clean.


The one-piece construction means the mat can be quickly rolled out where needed or cut to fit on site – no previous site visits required.




**Features:**




Diamond cut pattern




Two layer open-grid construction



Close mesh grid




Made from flexible PVC




Comes in 6m (20') rolls



**Benefits:**




Certified slip resistant  
(DIN 51130:R11, ASTM 1677:0.6/0.6)




Excellent drainage  
(DIN 51130:V10)



Wheel-and-heel proof



Easy to cut on site, contours to uneven surfaces



Seamless installation



**Plastex Matting Inc.**

120 55th St NE  
Fort Payne, AL 35967  
+1 256 845 7725

USA + UK manufactured  
matting products:  
[plastexmatting.com](http://plastexmatting.com)



### Standard sizes:

Product	Gateway Walk
Height	10mm (3/8")
Standard roll options	0.91 x 6m (3' x 20')
	1.22 x 6m (4' x 20')
Weight	8 kg/m2 (17.7 lbs/sq.ft)

### Tolerances:

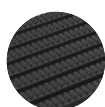
	Height (+/- 0.5mm)	Length (0+3mm)	Width (0+2mm)
Gateway Walk	10 mm	6 m	91 cm 122 cm

All dimensions are nominal

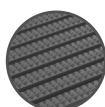
### Technical information:

Acoustic	Excellent sound absorption
Chemical	Resistant to most acids, alkalines and oils. You can read more about specific chemical resistances by <a href="#">downloading this information sheet</a>
Composition	Flexible Polyvinyl Chloride (PVC)
Environment	Gateway Walk is 100% recyclable. We don't use any substances included in the SVHC list under REACH in any of our matting products.
Fire	EN ISO 13501-1:2007-Bfl-S1, ASTM E648, Class I
Reversion	Thermoplastic shrinkage can result in size reductions up to 2%. This may be accelerated in hot environments. You can read more about the causes of shrinkage by <a href="#">downloading this information sheet</a> .
Slip resistance	DIN 51130:RI I, VI0
Thermal	Designed to function at temperatures from -23°C and up to +60°C. Slight size variation may occur at temperature extremes.
UV light	Resistant to PVC degradation
Volatile organic compound (VOC)	CDPH/EHLB Standard Method VI.2-2017 (California Section 01350) - School Classroom: PASS CDPH/EHLB Standard Method VI.2-2017 (California Section 01350) - Office: PASS Measured concentration of Total Volatile Organic Compounds (TVOC): Less than/equal to 0.5 mg/m3 (in compliance with CDPH/EHLB Standard Method VI.2-2017)
Warranty	Four years. Visit our <a href="#">policies page</a> for more information about warranties

### Colours:



Black



Dark grey

More colours  
available  
upon request

### Installation:

Gateway Walk's one-piece construction means installation is simple:

- Loose lay, no fixing required
- Durable, one-piece construction
- Supplied in 6m rolls; simply cut to fit on site
- Contours to the floor

### Cleaning:

Keeping Gateway Walk looking good is easy:

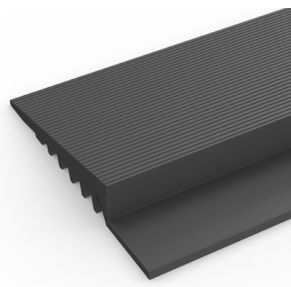
- Simply roll or lift to clean
- No special tools needed
- Easy to clean using a vacuum, plus a coarse brush for clearing the debris in the grid

[Watch](#) or [download](#) the cleaning instructions.

### Ancillaries:

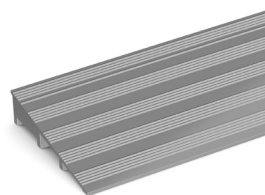
#### > For surface mounted installations

PVC edging (H: 10mm, W: 50mm)



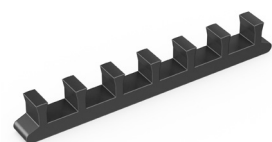
Supplied in rolls of 10.1m (33') length. One tube of cold welding paste recommended for every 10m of edging. Comes in black and dark grey. Size: 10mm x 50mm x 10.1m (3/8" x 2" x 33')

Aluminum ramp (H: 10mm, W: 45mm)



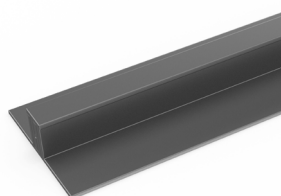
Supplied in sections of 1.98m (6'5") length with fixing screws. Comes in anodised aluminum. Size: 10mm x 45mm x 1.98m (3/8" x 1 3/4" x 6'5")

Connector clips: side-to-side (H: 10mm)



For joining sections of matting together end-to-end. Supplied in packs of 10

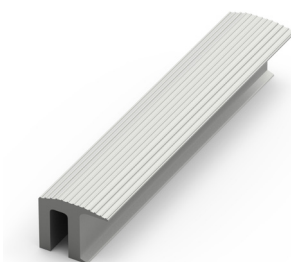
PVC snap track (H: 10.5mm)



Two-part snap track that can be welded together to join rolls end-to-end or side-to-side to cover large areas. We recommend one tube of cold welding paste for every 10m of edging. Comes in dark grey. Size: 10.5mm x 2.5m (13/32" x 8'2")

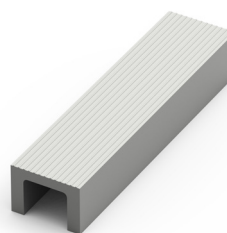
#### > For recessed installations

R frame (H: 10mm)



You'll need these to secure the matting on the left-to-right edges. Supplied in sections of 3m (10') length with fixing screws and plugs. Comes in anodised aluminum, powder coated dark grey and black. Size: 10mm x 12mm (3/8" x 15/32")

U section (H: 10mm)



If the front-to-back dimension of the mat well is greater than the final length of your matting, you may need a U section to secure the different sections together. Supplied in sections of 3m (10') length, with fixing screws and plugs. Comes in anodised aluminum, powder coated dark grey and black. Size: 10mm x 18mm (3/8" x 11/16")