

Gateway 10 (Frontrunner Entry)



Open-grid, slip-resistant entrance matting designed for high traffic areas.



Set the scene with Gateway 10, the perfect entrance matting for high traffic areas.

The mat's aggressive tread pattern scrapes shoes and wheels clean, while the open grid traps and collects the dirt and debris, preventing it from coming inside. This expands the life of your floor finishes and keeps interiors looking stylish for longer.

Gateway also comes in a 14mm height, for deeper mat wells in the existing subfloor.



Features:



Embossed pattern



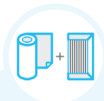
Two layer open-grid construction



Close mesh grid



Made from flexible PVC



Comes in 10m (33') rolls or modules



Benefits:



Certified slip resistant (DIN 51130:R11, ASTM 1677:0.6/0.6)



Excellent drainage (DIN 51130:V10)



Wheel-and-heel proof



Easy to cut on site, contours to uneven surfaces



Seamless installation



Plastex Matting Inc.

120 55th St NE
Fort Payne, AL 35967
+1 256 845 7725

USA + UK manufactured
matting products:
plastexmatting.com

Data sheet

Standard sizes:

Product	Gateway 10	Gateway 14
Height	10.5mm (13/32")	14mm (9/16")
Standard roll options	10 x 0.6m (33' x 2')	10 x 0.6m (33' x 2')
	10 x 0.91m (33' x 3')	10 x 0.91m (33' x 3')
	10 x 1.22m (16'6" x 4')	10 x 1.22m (16'6" x 4')
Standard module options		0.8 x 1.22m (2'7" x 4')
		1 x 1.5m (3'3" x 4'11")
		1.1 x 2m (3'7" x 6'7")
Weight	8.7 kg/m ² (1.6 lbs/sq.ft)	10.5 kg/m ² (2 lbs/sq.ft)

Surface modules are supplied with factory fitted PVC ramped edging to four sides

Tolerances:

	Height (+/- 0.5mm)	Length (0+0.3mm)	Width (0+2mm)		
Gateway 10	10.5 mm	10 m	60 cm	91 cm	122cm
Gateway 14	14 mm	10 m	60 cm	91 cm	122cm

All dimensions are nominal

Technical information:

Acoustic	Excellent sound absorption
Chemical	Resistant to most acids, alkalines and oils. You can read more about specific chemical resistances by downloading this information sheet
Composition	Flexible Polyvinyl Chloride (PVC)
Environment	Gateway is 100% recyclable. We don't use any substances included in the SVHC list under REACH in any of our matting products.
Reversion	Thermoplastic shrinkage can result in size reductions up to 2%. This may be accelerated in hot environments. You can read more about the causes of shrinkage by downloading this information sheet .
Slip resistance	ASTM E303 Dry/Wet with lines along-lines across 74-93 / 48-75
Thermal	Designed to function at temperatures from -23°C and up to +60°C. Slight size variation may occur at temperature extremes.
UV light	Resistant to PVC degradation
Volatile organic compound (VOC)	CDPH/EHLB Standard Method VI.2-2017 (California Section 01350) - School Classroom: PASS CDPH/EHLB Standard Method VI.2-2017 (California Section 01350) - Office: PASS Measured concentration of Total Volatile Organic Compounds (TVOC): Less than/equal to 0.5 mg/m ³ (in compliance with CDPH/EHLB Standard Method VI.2-2017)
Warranty	Gateway 10: two years. Gateway 14: four years. Visit our policies page for more information about warranties

Colours:



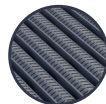
Black



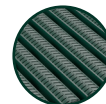
Dark grey



Dark brown



Oxford blue



Holly green

More colours
available
upon request

Installation:

Gateway's one-piece construction means installation is simple:

- Cut to fit on site – no special tools or previous site visits needed
- Integrates with all internal floor coverings
- Fits with different well depths
- Contours to the floor

[Watch](#) or download the [recessed entrance matting installation instructions](#) and the [surface-mounted installation instructions](#)

Cleaning:

Keeping Gateway looking good is easy:

- Simply roll or lift to clean
- No special tools needed
- Easy to clean using a vacuum, plus a coarse brush for clearing the debris in the grid

[Watch](#) or [download](#) the the cleaning instructions.

Gateway 10 ancillaries:

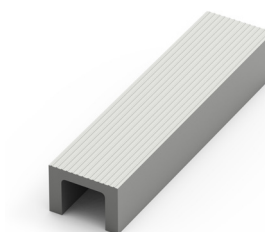
> For recessed installations: Gateway 10

R frame (H: 10mm)



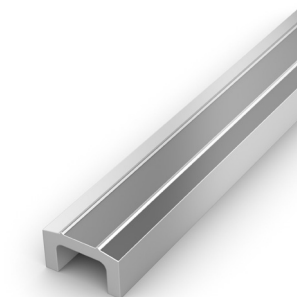
You'll need these to secure the matting on the left-to-right edges. Supplied in sections of 3m (10') length with fixing screws and plugs. Comes in anodized aluminum, powder coated dark grey and black. Size: 10mm x 12mm (3/8" x 15/32")

U section (H: 10mm)



If the front-to-back dimension of the mat well is greater than the final width of your matting, you may need a U section to secure the different sections together. Supplied in sections of 3m (10') length, with fixing screws and plugs. Comes in anodized aluminum, powder coated dark grey and black. Size: 10mm x 18mm (3/8" x 11/16")

R frame (H: 10mm)



If the front-to-back dimension of the mat well is greater than the final width of your matting, you may need an aluminum mat divider to secure the different sections together. Mat dividers can also be used to divide the overall vestibule into smaller sections, or as a perimeter frame in recessed applications. Supplied in sections of 3m (10') length. Optional "spike" concrete anchors are available. Comes in aluminum. Size: 10mm x 18mm x 3m (3/8" x 11/16" x 10')

Z frame (H: 10mm)



Installing matting next to ceramic tiles? You'll need a Z frame to secure the matting. Supplied in sections of 3.6m (11') length with fixing screws and plugs. Comes in anodized aluminum, powder coated dark grey and black. Size: 10mm x 24mm (3/8" x 15/16")

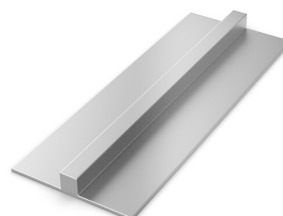
Gateway 10 ancillaries:

H section (H: 10mm)



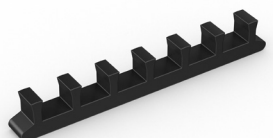
If the front-to-back dimension of the mat well is greater than the final width of your matting, you may need a H section to secure the different sections together. Supplied in sections of 3m (10') length, with fixing screws and plugs. Comes in black, with mat insert colour specified. Size: 10mm x 13mm (3/8" x 1/2")

T frame inverted (H: 10mm)



You can use a T frame to divide the matting into sections left-to-right – this makes it easier to lift and clean. Supplied in sections of 3m (10') length with no pre-drilled holes. Comes in anodized aluminum.

Connector clips: side-to-side (H: 10mm)



For joining sections of Gateway 10 matting together side-to-side. Supplied in packs of 10

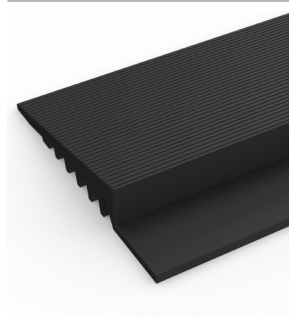
> For surface mounted installations: Gateway 10

Aluminum ramp (H:10mm)



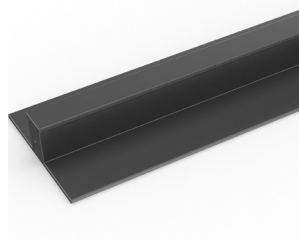
Supplied in sections of 2m (6'6") length, optional Tapcon Concrete Screws are available. Comes in anodized aluminum. Size: 10mm x 45mm x 2m (3/8" x 1 13/16" x 6'6")

PVC edging (H: 10mm, W: 50mm)



Supplied in rolls of 10.1m (33') length. One tube of cold welding paste recommended for every 10m of edging. Comes in black and dark grey. Size: 10mm x 50mm x 10.1m (3/8" x 2" x 33')

PVC snap track (H: 10.5mm)



Two-part snap track that can be welded together to join rolls end-to-end or side-to-side to cover large areas. We recommend one tube of cold welding paste for every 10m of edging. Comes in dark grey. Size: 10.5mm x 2.5m (13/32" x 8'2")

Connector clips: side-to-side (H: 10mm)



For joining sections of Gateway 10 matting together side-to-side. Supplied in packs of 10

Data sheet

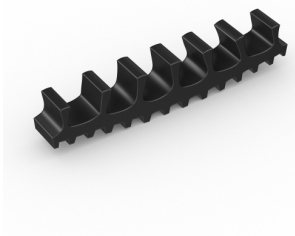
Gateway 14 ancillaries:

L frame (H: 15mm)



Installing around a circular door or non rectangular space? You'll need a L frame to secure the matting. Size: 15mm x 2.7m length (5/8" x 8')

Connector clips: side-to-side (H: 14mm)



For joining sections of Gateway 14 matting together side-to-side. Supplied in packs of 10

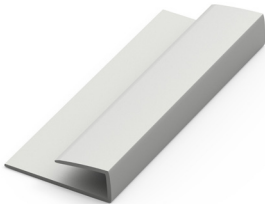
> For recessed installations: Gateway 14

R frame (H: 14mm)



You'll need these to secure the matting on the left-to-right edges. Supplied in sections of 3m (10') length with fixing screws and plugs. Comes in anodized aluminum, powder coated dark grey and black. Size: 14mm x 12mm (9/16" x 15/32")

J frame (H: 18mm)



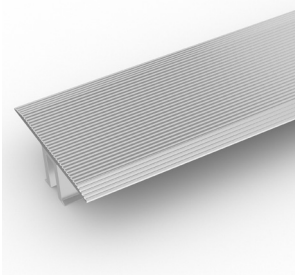
Installing Gateway 14 against a wall? You'll need a J frame to secure the matting on the left-to-right edges. Supplied in sections of 3m (10') length with fixing screws and plugs. Comes in dark grey and black. Size: 18mm x 60mm (1 1/16" x 2 3/8")

T frame (H: 14mm)



You can use a T frame (27mm) to divide the matting into sections left-to-right – this makes it easier to lift and clean. Supplied in sections of 3m (10') length with fixing screws and plugs. Comes in anodized aluminum, powder coated dark grey and black

TL frame (H: 14mm)



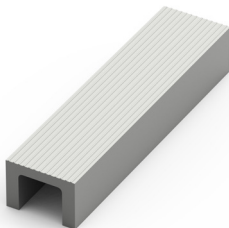
You can use a T/L frame (55mm) to divide the matting into sections left-to-right – this makes it easier to lift and clean. Supplied in sections of 3m (10') length with fixing screws and plugs. Comes in anodized aluminum

H section (H: 14mm)



If the front-to-back dimension of the mat well is greater than the final width of your matting, you may need a H section to secure the different sections together. Supplied in sections of 3m (10') length, with fixing screws and plugs. Comes in black, with mat insert colour specified. Size: 14mm x 13mm (9/16x 1/2")

U section (H: 14mm)

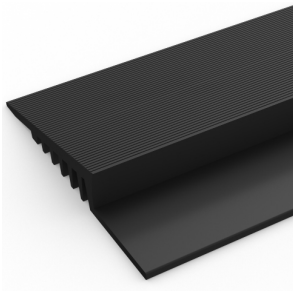


If the front-to-back dimension of the mat well is greater than the final width of your matting, you may need a U section to secure the different sections together. Supplied in sections of 3m (10') length, with fixing screws and plugs. Comes in anodized aluminum, powder coated dark grey and black. Size: 14mm x 19mm (9/16" x 3/4")

Gateway 14 ancillaries:

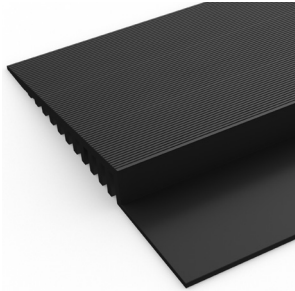
> For surface mounted installations

PVC edging (H: 14mm,W: 60mm)



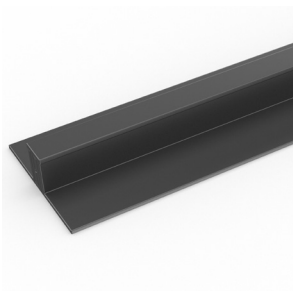
Supplied in rolls of 10.1m (33') length. One tube of cold welding paste recommended for every 10m of edging. Comes in black, dark grey, dark brown, holly green, Oxford blue, yellow. Size: 14mm x 60mm x 10.1m (9/16" x 2 1/2" x 33')

PVC edging (H: 14mm,W: 100mm)



Supplied in rolls of 10.1m (33') length. One tube of cold welding paste recommended for every 10m of edging. Comes in black, dark grey and yellow. Size: 14mm x 100mm x 10.1m (9/16" x 3 3/4" x 33')

PVC snap track (H: 14mm)



Two-part snap track that can be welded together to join rolls end-to-end or side-to-side to cover large areas. We recommend one tube of cold welding paste for every 10m of edging. Comes in black and dark grey. Size: 14mm x 2.5m (9/16" x 8'2").

Aluminum edging (H: 15mm)



Supplied in sections of 2m (6'6") length with fixing screws and plugs. Comes in anodized aluminum and powder coated yellow. Size: 15mm x 45mm x 2m (9/16" x 1 13/16" x 6'6")