

# Gateway Entrance Flooring System



## SB and SB+ installation instructions

Please read these instructions carefully and completely before commencing installation. Non-compliance with these instructions may result in product failure.

### I. PREPARATION

- a) It is recommended that the entrance flooring system be installed as one of the final jobs to avoid damage associated with general building works.
- b) Unpack and inspect all materials to ensure they are free from transport damage.
- c) Check all components and tools required are available.
- d) Unroll/unpack the sections of matting and lay flat in a clean, dry protected area to acclimatize and relax. Depending on the duration of storage and ambient temperature, this process may take up to 24 hours.
  - i) Printed arrows on the underside of the mat indicate the direction of the carpet pile. When installing multiple sections of matting ensure all arrows are aligned in the same direction. This will prevent the carpet pile from appearing as different colors/shades once installed.
- e) When handling rolls or large panels of matting at any time during the installation, avoid dragging or rough handling that may cause stretching or distortion.

### 2. EQUIPMENT REQUIRED

- Gateway SB or SB+ entrance flooring matting (supplied)
- PVC edging or aluminum frames (as required)
- Utility knife and straight edge for trimming sections of mat
- Adhesive (as required) for sticking down Gateway SB and SB+ mats (if applicable)
  - Proper trowel for adhesive
  - 100 Lb Floor Roller
  - Hand Floor Roller



### 3. TYPE OF INSTALLATION

#### Loose laid

Small areas of mats can be loose laid. PVC edging is recommended to finish any traffic edges, please consult your local salesperson for prefabricated options.

#### Adhered

For larger installations and/or high traffic areas, it is recommended to adhere Gateway SB/SB+ to the sub-floor. Adhesion must be carried out in accordance with instructions of the adhesive manufacturer. Consult your local salesperson for recommendations on approved adhesives in your region.

---

#### Plastex Matting Inc.

120 55th St NE  
Fort Payne, AL 35967  
+1 256 845 7725

USA + UK manufactured  
matting products:  
[plastexmatting.com](https://www.plastexmatting.com)

Watch our Gateway entrance system in action:  
<https://www.plastexmatting.com/ca/videos>

# Gateway Entrance Flooring System



## SB and SB+ installation instructions

### 4. SUB FLOOR PREPARATION

Before commencing installation, thoroughly clean the sub-floor and visually check that it is smooth and sound. Ensure the sub-floor is dry, free from dust, grease, and debris. Any unevenness or cracks should be repaired with appropriate leveling compounds. If adhering, the moisture content should be checked to confirm it meets the adhesive manufacturer's specifications.

### 5. INSTALLING THE MATTING

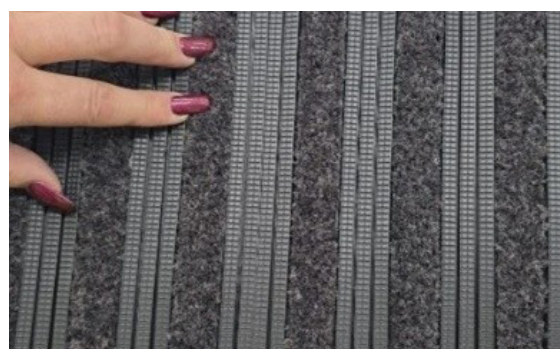
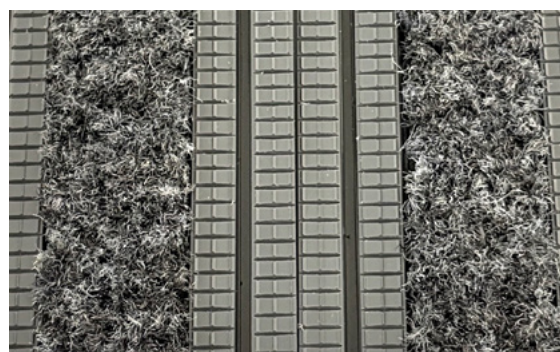
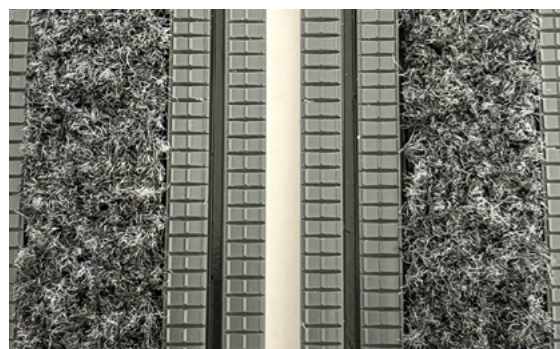
Gateway SB and SB+ should be installed wall to wall, or edge to edge with adjacent floor coverings in the entrance area. Install matting so that ribs are running perpendicular to the flow of foot traffic when entering.

- a) Cut matting to length using a utility knife and a straight edge. Allow extra 5cm (2") on length (left to right) for final trimming of ends once fully adhered.
- b) Ensure top surface is uppermost when cutting.
- c) Due to the elastic nature of the product, it is important to avoid rough handling of product during installation thus preventing possible stretching.

#### Installing multiple widths of matting (front to back dimension)

A "Factory Edge" will consist of two bars on either side of the matting. As shown in the photos it is recommended to join factory edges creating a four-bar seam. This is the recommended installation method by the manufacturer as it gives the most durable seam in areas of heavy traffic. In areas where joining factory edges is not possible, it is recommended to always leave two bars on either side to create a 4-bar seam and to trim off overhanging backing material. Follow the below instructions for installation:

- a) Prepare the sub floor in accordance with step 4 above.
- b) When laying the mats in location for install, ensure the arrows on the underside of the panels are orientated in the same direction to avoid shade/pattern clash.
- c) Cut multiple widths as described in step 5 above and lay flush edge to flush edge of each panel.
- d) Trim extremities flush to surrounding floor or wall finishes.
- e) Apply the adhesive according to the adhesive manufacturer's instructions, ask your salesperson for recommendations on adhesives to use based on your environment. It is the installer's responsibility to follow the adhesive manufacturer's instructions, specifically regarding rolling the mat after placement and cure timings, to achieve proper bonding and performance.
- f) Always use a "Hand Floor Roller" along edges and seams to ensure full adhesive contact



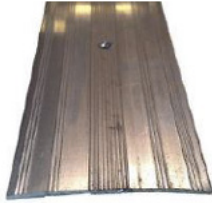
# Gateway Entrance Flooring System



SB and SB+ installation instructions

## 6. FINISHING ENDS / MATTING PERIMETER

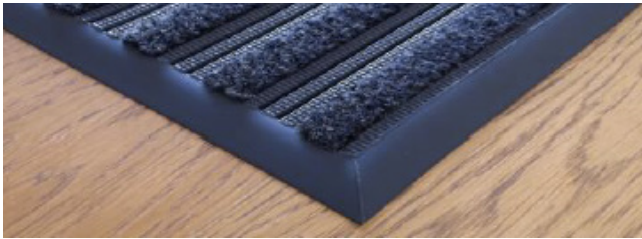
Finish any exposed edges or transitions to other floor surfaces with locally available aluminum floor trims as examples below:



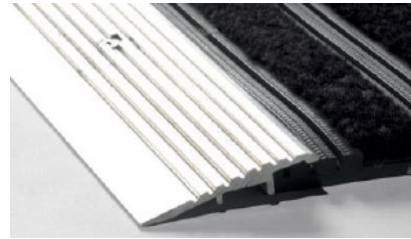
Same height between floors



Different height between floors



For edges, use PVC edging



For edges, use locally available aluminum

Cover and protect entrance flooring system until final cleaning prior to opening.