

Heron Walk



Delivers safety and comfort in barefoot environments where there's sloped or angled walkways.

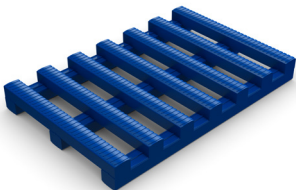


Heron Walk works in any environment with a sloped barefoot walkway, from water park rides and wave machines to beaches and hydrotherapy pools.

This self-draining mat makes these spaces accessible for both wheelchair users and pedestrians, with cross-directional top ribs for extra traction and an embossed surface for comfort underfoot.

Its one-piece construction means Heron Walk is easy to clean and maintain, and can be quickly rolled out where needed or cut to fit on site.

This UV-resistant mat can be used indoors and outdoors; its two-tier construction provides a thermal barrier by elevating bare feet off of hot surfaces.



Features:



Embossed surface



Two-layer construction and channelled underbars



Anti-microbial and anti-fungal properties



Made from flexible PVC



UV resistant



Benefits:



Certified slip resistance



Four-way drainage



Excellent hygiene, easy to clean



Easy to cut to fit; contours to uneven surfaces



Can be used indoor or outdoor



Plastex Matting Inc.

120 55th St NE
Fort Payne, AL 35967
+1 256 845 7725

USA + UK manufactured
matting products:
plastexmatting.com

Standard sizes:

Product	Heron Walk
Height	13/32" (10.5mm)
Standard roll options	3' x 40' (0.91 x 12 m) 4' x 40' (1.22 x 12 m)
Weight	1.02 lb/sq.ft (5 kg/m2)

Tolerances:

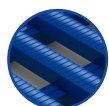
	Height (+/- 0.05")	Length (0+ 1.0')	Width (+/- 1/2")
Heron Walk	13/32"	33'	3' 4'

All dimensions are nominal

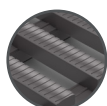
Technical information:

Acoustic	Excellent sound absorption properties
Chemical	Resistant to most acids, alkalines and oils. You can read more about specific chemical resistances by downloading this information sheet .
Composition	Flexible Polyvinyl Chloride (PVC).
Environment	Heron Walk is 100% recyclable. We don't use any substances included in the SVHC list under REACH in any of our matting products.
Hygiene	Made from non-porous PVC that's naturally resistant to bacteria growth. Incorporates anti-microbial and anti-fungal properties for continuous hygiene.
Reversion	Thermoplastic shrinkage can result in size reductions up to 2%. This may be accelerated in hot environments. You can read more about the causes of shrinkage by downloading this information sheet .
Slip resistance	ASTM F 1677 - Dry/Wet: 0.9/0.7 DIN 51097: Classification C
Thermal	Designed to function at temperatures from -9°F and up to +140°F. Slight size variation may occur at temperature extremes.
UV light	Resistance to PVC degradation
Warranty	Three years. Visit our policies page for more information about warranties

Colors



Ocean blue



Charcoal gray

More colors
available
upon request

Installation:

Heron Walk's one piece construction means installation is simple:

- Made from flexible PVC
- Supplied in rolls for quick installation
- Easy to cut to fit on site
- Contours to uneven surfaces

Cleaning:

Regular cleaning will maintain both the effectiveness and lifespan of Heron Walk.

Heron Walk has both anti-bacterial and anti-fungal additives to protect against fungal and bacterial contamination, but regular cleaning is also recommended to remove light grease and oils, food fat, wax and acrylic polishes..

PREPARATION

Check the matting is free from any loose items like litter and clothing fibers.

HAND CLEANING

Regular hand cleaning should be done as required, using an [alkaline cleaning fluid](#) as per the manufacturer's instructions. The matting can be cleaned in position – simply apply the cleaning solution with a sprayer or mop and allow to penetrate any grease or dirt. You can then use a stiff deck brush to work the cleaning fluid into the surface dirt. Allow to soak before rinsing with clean water.

If you're deep cleaning or cleaning the flooring below, the mats should be rolled up. They shouldn't be folded or pulled or dragged, as this will damage the matting over time.

MACHINE CLEANING

How frequently you machine clean will depend on how much traffic the area gets. Spray the surface with the alkaline solution and then, using a cylindrical brush machine, clean the top surface in the direction of the top ribs. If there's an etched pattern on the top ribs where dirt can easily collect, make additional cross passes to ensure a thorough clean.

If the underside of the matting also needs a clean, roll it up and then roll back out, leaving the underside facing upwards. Repeat the spray and above cleaning instructions.

STEAM CLEANING

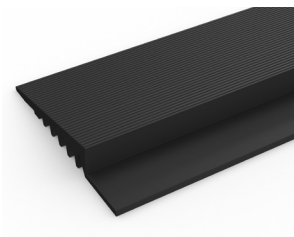
Any type of steam cleaner can be used. Good results have been obtained with nozzle pressure of approximately 1000 lbs p.s.i. (6894.8 kN/m²) and water temperature of approximately 212°F. Cleaning fluid should be diluted according to the manufacturer's recommendation.

[Download these cleaning instructions.](#)

Ancillaries:

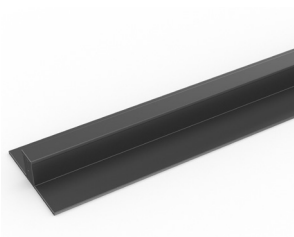
> Heron Walk

PVC edging (H: 3/8", W: 2")



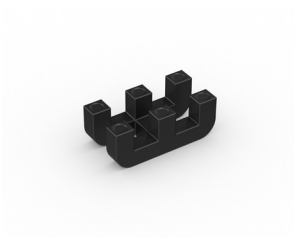
Supplied in rolls of 33' (10.1m) length with cold welding paste. Comes in black and dark gray. Size: 3/8" x 2" x 33' (10mm x 50mm x 10.1m)

PVC snap track (H: 3/8")



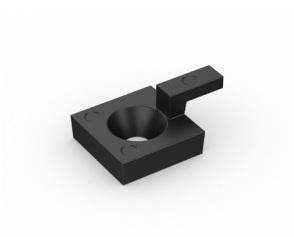
Two-part snap track that can be welded together to join rolls end-to-end or side-to-side to cover large areas. Supplied with cold welding paste. Comes in dark gray. Size: 13/32" x 8'2" (10.5mm x 2.5m)

Connector clips: dual purpose (H: 9/16")



For joining sections of matting together side-to-side or end-to-end. Supplied in packs of 10

Small floor hook (H: 9/16")



For securing sections of the matting to the floor. Supplied in packs of 10 with screws and plugs