

Interlocking checker-plate PVC tiles designed for work stations, assembly lines and storage areas.



A hard-wearing tiling system that's made from 100% recycled material, Plastex Chex is ideal for covering large areas in busy industrial workplaces.

Its solid surface provides a seamless floor covering, while the non-porous PVC remains resistant to chemicals, oils, acids and extreme temperatures. PVC ramped edges and a hard-wearing checker-plate surface make it the perfect tiled matting for work stations, garage floors, assembly areas, laboratories and storage areas.



## Features:



Checker-plate design



Made from non-porous PVC



Interlocking jigsaw tiles with PVC ramped edging



Made from 100% recycled material



Excellent sound absorption properties



## Benefits:



Slip resistant and hard wearing



Resistant to chemicals, acids, oils



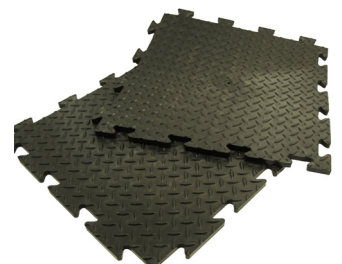
Seamless installation



REACH compliant



Reduces noise levels



## Plastex Matting Inc.

120 55th St NE  
Fort Payne, AL 35967  
+1 256 845 7725

USA + UK manufactured matting products:  
[plastexmatting.com](http://plastexmatting.com)

### Standard sizes:

<b>Product</b>	Plastex Chex
<b>Height</b>	14mm (9/16")
<b>Standard tile size</b>	0.5m x 0.5m (1'8" x 1'8")
<b>Weight</b>	6.8 kg/m <sup>2</sup> (1.4 lb/sq.ft.)

### Tolerances:

	Height (+/- 0.5mm)	Standard tile size (+/- 1cm)
Plastex Chex	14mm	50cm x 50cm

All dimensions are nominal

### Technical information:

<b>Acoustic</b>	Excellent sound absorption
<b>Chemical</b>	Resistant to most acids, alkalines and oils. You can read more about specific chemical resistances by downloading this <a href="#">information sheet</a> .
<b>Composition</b>	Flexible Polyvinyl Chloride (PVC).
<b>Environment</b>	Plastex Chex is 100% recyclable and is made from 100% post-industrial recycled PVC. We don't use any substances included in the SVHC list under REACH in any of our tiling products.
<b>Fire</b>	UL 94 V-2
<b>Reversion</b>	Thermoplastic shrinkage can result in size reductions up to 2%. This may be accelerated in hot environments. You can read more about the causes of shrinkage by <a href="#">downloading this information sheet</a> .
<b>Thermal</b>	Designed to function at temperatures from -23°C and up to +60°C. Slight size variation may occur at temperature extremes.
<b>UV light</b>	Resistant to PVC degradation
<b>Warranty</b>	Two years. Visit our <a href="#">policies page</a> for more information about warranties

### Installation:

Plastex Chex's interlocking system means installation is simple:

- Tiles easily and securely lock into place
- Effectively covers large areas
- No special tools needed

[Download the full installation instructions](#)

### Cleaning:

Keeping Plastex Chex looking good is easy:

- Light to handle
- Simply lift to clean
- Easy to clean with a high pressure hose



**Colours:**



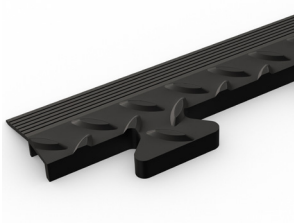
Black

More colours available upon request

**Ancillaries:**

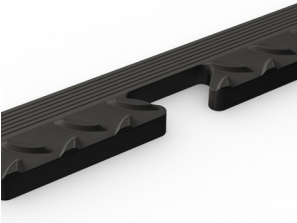
> **Plastex Chex**

Plastex Chex edging (male)



Supplied in 50cm (1'8") lengths. Comes in black and yellow. Size: 12mm x 50mm x 50cm (1/2" x 2" x 1'8")

Plastex Chex edging (female)



Supplied in 50cm (1'8") lengths. Comes in black and yellow. Size: 12mm x 50mm x 50cm (1/2" x 2" x 1'8")