

Interlocking checker-plate PVC tiles designed for work stations, assembly lines and storage areas.



A hard-wearing tiling system that's made from 100% recycled material, Plastex Chex is ideal for covering large areas in busy industrial workplaces.

Its solid surface provides a seamless floor covering, while the non-porous PVC remains resistant to chemicals, oils acids and extreme temperatures. PVC ramped edges and a hard-wearing checker-plate surface make it the perfect tiled matting for work stations, garage floors, assembly areas, laboratories and storage areas.



Features:



Checker-plate design



Made from non-porous PVC



Interlocking jigsaw tiles with PVC ramped edging



Made from 100% recycled material



Excellent sound absorption properties



Benefits:



Slip resistant and hard wearing



Resistant to chemicals, acids, oils



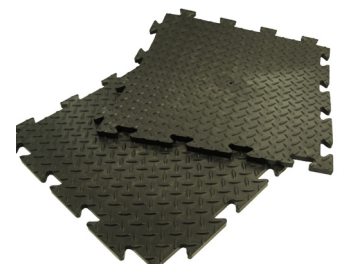
Seamless installation



REACH compliant



Reduces noise levels



Plastex Matting Inc.

120 55th St NE
Fort Payne, AL 35967
+1 256 845 7725

USA + UK manufactured matting products:
plastexmatting.com

Standard sizes:

Product	Plastex Chex
Height	9/16" (14mm)
Standard tile size	1'8" x 1'8" (0.5m x 0.5m)
Weight	1.40 lb/sq.ft (6.8 kg/m ²)

Tolerances:

	Height (+/- 0.5")	Standard tile size (+/- 1/2")
Plastex Chex	9/16"	1'8" x 1'8"

All dimensions are nominal

Technical information:

Acoustic	Excellent sound absorption
Chemical	Resistant to most acids, alkalines and oils. You can read more about specific chemical resistances by downloading this information sheet .
Composition	Flexible Polyvinyl Chloride (PVC).
Environment	Plastex Chex is 100% recyclable, and is made from 100% post-industrial recycled PVC. We don't use any substances included in the SVHC list under REACH in any of our tiling products.
Fire	UL 94 V-2
Reversion	Thermoplastic shrinkage can result in size reductions up to 2%. This may be accelerated in hot environments. You can read more about the causes of shrinkage by downloading this information sheet .
Thermal	Designed to function at temperatures from -7°F and up to +140°F. Slight size variation may occur at temperature extremes.
UV light	Resistant to PVC degradation
Warranty	Two years. Visit our policies page for more information about warranties

Installation:

Plastex Chex's interlocking system means installation is simple:

- Tiles easily and securely lock into place
- Effectively covers large areas
- No special tools needed

[Download the full installation instructions](#)

Cleaning:

Keeping Plastex Chex looking good is easy:

- Light to handle
- Simply lift to clean
- Easy to clean with a high pressure hose



Colors:



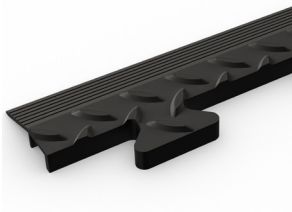
Black

More colors available upon request

Ancillaries:

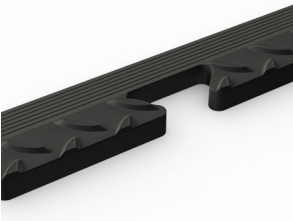
> **Plastex Chex**

Plastex Chex edging (male)



Supplied in 1'8" (50cm) lengths. Comes in black and yellow. Size: 1/2" x 2" x 1'8" (12mm x 50mm x 50cm)

Plastex Chex edging (female)



Supplied in 1'8" (50cm) lengths. Comes in black and yellow. Size: 1/2" x 2" x 1'8" (12mm x 50mm x 50cm)