

Interlocking checker-plate PVC tiles designed for work stations, assembly lines and storage areas.



A hard-wearing tiling system that's made from 100% recycled material, Plastex Chex is ideal for covering large areas in busy industrial workplaces.

Its solid surface provides a seamless floor covering, while the non-porous PVC remains resistant to chemicals, oils, acids and extreme temperatures. PVC ramped edges and a hard-wearing checker-plate surface make it the perfect tiled matting for work stations, garage floors, assembly areas, laboratories and storage areas.



Features:



Checker-plate design



Made from non-porous PVC



Interlocking jigsaw tiles with PVC ramped edging



Made from 100% recycled material



Excellent sound absorption properties



Benefits:



Slip resistant and hard wearing



Resistant to chemicals, acids, oils



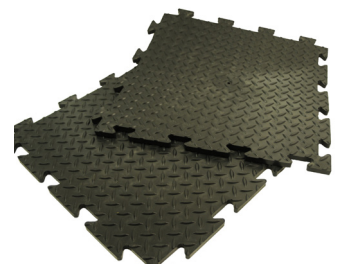
Seamless installation



REACH compliant



Reduces noise levels



Plastic Extruders Ltd.

Russell Gardens, Wickford
Essex, SS11 8DN
+44 (0) 1268 571 116

UK + USA manufactured
matting products:
plastexmatting.com



Standard sizes:

Product	Plastex Chex
Height	14mm (9/16")
Standard tile size	0.5m x 0.5m (1'8" x 1'8")
Weight	6.8 kg/m ² (1.4 lb/sq.ft.)

Tolerances:

	Height (+/- 0.5mm)	Standard tile size (+/- 1cm)
Plastex Chex	14mm	50cm x 50cm

All dimensions are nominal

Technical information:

Acoustic	Excellent sound absorption
Chemical	Resistant to most acids, alkalines and oils. You can read more about specific chemical resistances by downloading this information sheet .
Composition	Flexible Polyvinyl Chloride (PVC).
Environment	Plastex Chex is 100% recyclable and is made from 100% post-industrial recycled PVC. We don't use any substances included in the SVHC list under REACH in any of our tiling products.
Fire	UL 94 V-2
Reversion	Thermoplastic shrinkage can result in size reductions up to 2%. This may be accelerated in hot environments. You can read more about the causes of shrinkage by downloading this information sheet .
Thermal	Designed to function at temperatures from -23°C and up to +60°C. Slight size variation may occur at temperature extremes.
UV light	Resistant to PVC degradation
Warranty	Two years. Visit our policies page for more information about warranties

Installation:

Plastex Chex's interlocking system means installation is simple:

- Tiles easily and securely lock into place
- Effectively covers large areas
- No special tools needed

[Download the full installation instructions](#)

Cleaning:

Keeping Plastex Chex looking good is easy:

- Light to handle
- Simply lift to clean
- Easy to clean with a high pressure hose



Colours:



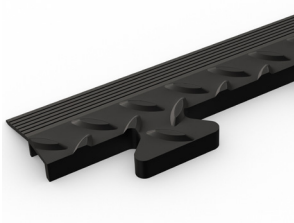
Black

More colours available upon request

Ancillaries:

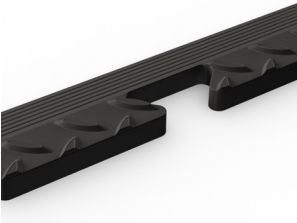
> **Plastex Chex**

Plastex Chex edging (male)



Supplied in 50cm (1'8") lengths. Comes in black and yellow. Size: 12mm x 50mm x 50cm (1/2" x 2" x 1'8")

Plastex Chex edging (female)



Supplied in 50cm (1'8") lengths. Comes in black and yellow. Size: 12mm x 50mm x 50cm (1/2" x 2" x 1'8")