

# Plastex Grid

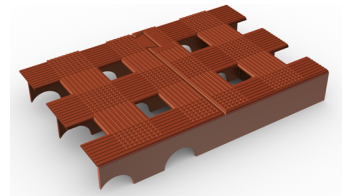


Heavy-duty open-grid tiles that interlock together to create raised work surfaces.



With its open-grid design and easy 'lock-fit' connection, Plastex Grid is ideal for covering large areas in industrial workplaces.

The tiles' heavy-duty open grid can withstand weights up to 10,240 lbs/ft<sup>2</sup> and provides excellent drainage, making it the perfect tiling system for industrial workplaces where detergents, industrial chemicals and acids are likely to be spilled. Sitting at a raised height of 1", the tiles easily lock into place, creating an elevated work surface that's flexible yet hard-wearing.



## Features:



1" raised surface



Open-grid



Textured design



Made from rigid polyethylene



Secure 'lock fit' connection



## Benefits:



Surface protection; reduces fatigue



Removes large quantities of liquids



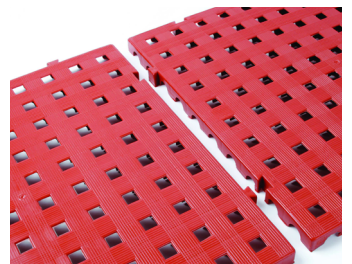
Provides good slip resistance



Withstands weights up to 10,240 lbs/ft<sup>2</sup>



Easy to install, can be moved around as needed



## Plastex Matting Inc.

120 55th St NE  
Fort Payne, AL 35967  
+1 256 845 7725

USA + UK manufactured matting products:  
[plastexmatting.com](http://plastexmatting.com)



### Standard sizes:

Product	Plastex Grid
Height	1" (25mm)
Standard tile options	1'8" x 1'8" (50 x 50cm)
Weight	0.66 lbs/sq.ft (3.3kg/m <sup>2</sup> )

### Tolerances:

	Height (+/- 0.05")	Dimensions (+/- 1/2")
Plastex Grid	1"	1'8" x 1'8"

All dimensions are nominal

### Technical information:

Chemical	Resistant to most acids, alkalines and oils. You can read more about specific chemical resistances by downloading this <a href="#">information sheet</a> .
Composition	Made from linear low density polyethylene (LLDPE).
Hygiene	Made from non-porous 100% LLDPE (linear low-density polyethylene), which inhibits the growth of bacteria.
Thermal	Designed to function at temperatures from -7°F and up to -140°F. Slight size variation may occur at temperature extremes.
Warranty	Two years. Visit our <a href="#">policies page</a> for more information about warranties

### Installation:

Plastex Grid's 'lock fit' connection means installation is simple:

- The tiles easily and securely lock into place
- Creates a raised 1" work surface
- Effectively covers large areas
- No special tools or previous site visits needed for installation

[Download the full installation instructions here.](#)

### Cleaning:

Keeping Plastex Grid looking good is easy:

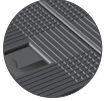
- Light to handle
- Simply lift to clean
- Easy to clean with a high pressure hose

# Plastex Grid

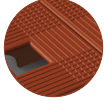
## Data sheet



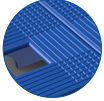
**Colors:**



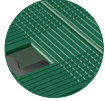
Dark gray



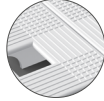
Red



Blue



Green



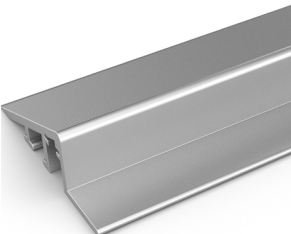
White

More colors available upon request

**Ancillaries:**

> **Plastex Grid**

Aluminum edging (H: 1")



Supplied in sections of 6'6" (2m) length with fixing screws and plugs. Comes in anodized aluminum. Size: 1" x 2 3/4" x 6'6" (25mm x 66mm x 2m)