

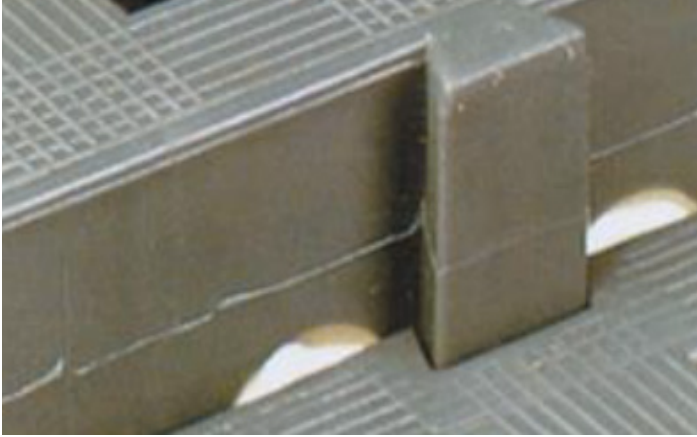
Plastex Grid

Installation instructions

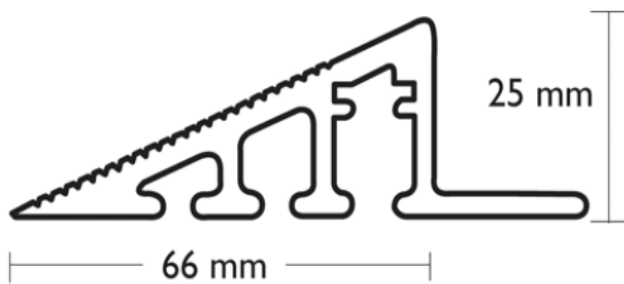


Open or solid tiles

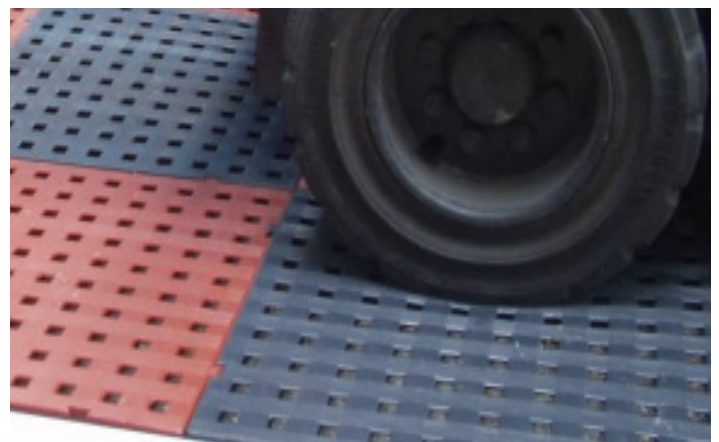
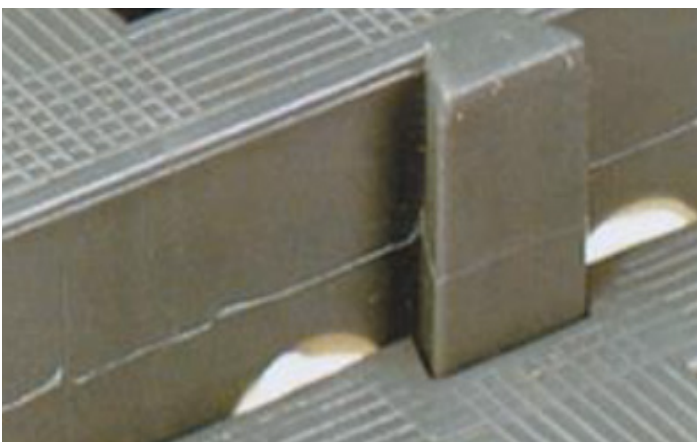
- 1) Plastex Grid is an interlocking tile, so simply slot the connection tag in the groove.



- 2) If you use the aluminium ramp, the ramp is screwed down to the floor with the screws provided:



- 3) When the aluminium ramp meets the side of the tile, the extra tag can be removed by simply cutting it.



Note: the pictures shown in this guide are for illustrative purposes only.

Plastic Extruders Ltd.

Russell Gardens, Wickford
Essex, SS11 8DN
+44 (0) 1268 571 116

UK + USA manufactured
matting products:
plastexmatting.com

Date: November 2017