

Open-grid, interlocking PVC tiles designed for busy industrial workplaces where spillages are likely.



A hard-wearing tiling system that's certified slip resistant and made from 100% recycled material, Plastex Lok is ideal for busy industrial workplaces where spillages are frequent.

Its dimpled surface provides the highest level of slip resistance, while the non-porous PVC naturally resists chemicals, oils and acids. Ramped edges and a raised construction make it the perfect matting for work stations, assembly areas, laboratories and storage areas where spillages happen frequently and drainage is needed.



Features:



Dimpled surface



Raised construction



Made from non-porous PVC



Interlocking tiles with ramped edging



Made from 100% recycled material



Benefits:



Certified slip resistant (DIN 51130:R12)



Excellent drainage (DIN 51130:V10)



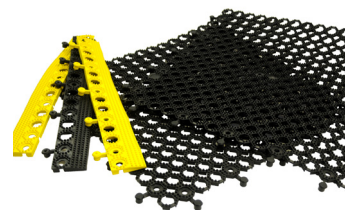
Resistant to chemicals, acids, oils



Seamless installation



Environmentally friendly



Plastex Matting Inc.

120 55th St NE
Fort Payne, AL 35967
+1 256 845 7725

USA + UK manufactured matting products:
plastexmatting.com

Standard sizes:

Product	Plastex Lok
Height	16mm (5/8")
Standard tile size	0.5m x 0.5m (1'8" x 1'8")
Weight	4.8kg/m ² (1.10lb/sq.ft)

Tolerances:

	Height (+/- 0.5mm)	Standard tile size (+/- 1cm)
Plastex Lok	16mm	50cm x 50cm

All dimensions are nominal

Technical information:

Acoustic	Excellent sound absorption
Chemical	Resistant to most acids, alkalines and oils. You can read more about specific chemical resistances by downloading this information sheet .
Composition	Flexible Polyvinyl Chloride (PVC).
Environment	Plastex Lok is 100% recyclable and made from 100% post-industrial recycled PVC. We don't use any substances included in the SVHC list under REACH in any of our tiling products.
Reversion	Thermoplastic shrinkage can result in size reductions up to 2%. This may be accelerated in hot environments. You can read more about the causes of shrinkage by downloading this information sheet .
Thermal	Designed to function at temperatures from -23°C and up to +60°C. Slight size variation may occur at temperature extremes.
UV light	Resistant to PVC degradation
Warranty	Two years. Visit our policies page for more information about warranties

Installation:

Plastex Lok's interlocking system means installation is simple:

- Tiles easily and securely lock into place
- Effectively covers large areas
- No special tools needed

[Download the full installation instructions](#)

Cleaning:

Keeping Plastex Lok looking good is easy:

- Light to handle
- Simply lift to clean
- Easy to clean with a high pressure hose

Colours:



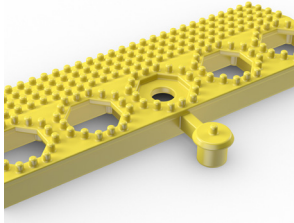
Black

More colours
available
upon request

Ancillaries:

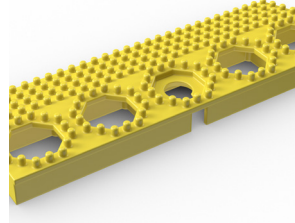
> Plastex Lok

Plastex Lok edging (male)



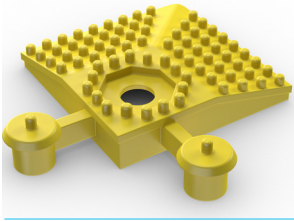
Supplied in 50cm (1'8") lengths. Both male and female strips are available. Comes in black and yellow. Size: 12mm x 50mm x 50cm (1/2" x 2" x 1'8")

Plastex Lok edging (female)



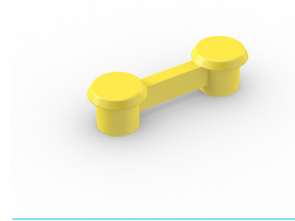
Supplied in 50cm (1'8") lengths. Both male and female strips are available. Comes in black and yellow. Size: 12mm x 50mm x 50cm (1/2" x 2" x 1'8")

Plastex Lok ramped corner



Comes in black and yellow. Size: 12mm x 50mm x 50mm (1/2" x 2" x 2")

Plastex Lok edging connector clips



For joining two ends of the edging together. One lug is supplied for every two pieces of edging in the relevant colour