

# Tuff Spun

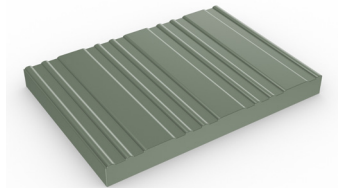


Anti-fatigue, noise-reducing foam matting for light duty use.



With its ribbed slip-resistant surface and foam composition, Tuff Spun is ideal for workplaces with employees who need comfort underfoot.

Certified wear resistant, this anti-fatigue matting not only reduces standing fatigue and boosts productivity, it also reduces impact noise and provides protection against anything that might be accidentally dropped.



## Features:



Made from industrial sponge construction



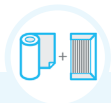
Ribbed surface



PVC foam construction



Closed cell construction



Comes in 60' (18m) rolls and standard modules



## Benefits:



Certified wear resistant (ASTM 4060: < 1g loss)



Good slip resistance



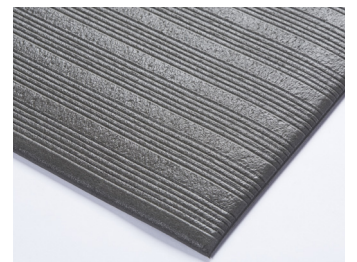
Reduces noise and standing fatigue



Protects dropped items from damage



Quick to install



## Plastex Matting Inc.

120 55th St NE  
Fort Payne, AL 35967  
+1 256 845 7725

USA + UK manufactured  
matting products:  
[plastexmatting.com](http://plastexmatting.com)

### Standard sizes:

Product	Tuff Spun in gray	Tuff Spun in black	Tuff Spun Plus
Height	3/8" (9mm)	3/8" (9mm)	3/8" (9mm)
Standard roll options		60' x 2' (18 x 0.6m)	
	60' x 3' (18 x 0.91m)	60' x 3' (18 x 0.91m)	60' x 3' (18 x 0.91m)
		60' x 4' (18 x 1.22m)	
Standard module options	2' x 3' (0.6 x 0.91m)		2' x 3' (0.6 x 0.91m)
	3' x 5' (0.91 x 1.5m)		3' x 5' (0.91 x 1.5m)
	3' x 10' (0.91 x 3m)		3' x 10' (0.91 x 3m)
Weight	0.68lbs/sq.ft (3.3kg/m <sup>2</sup> )	0.68lbs/sq.ft (3.3kg/m <sup>2</sup> )	0.68lbs/sq.ft (3.3kg/m <sup>2</sup> )

Surface modules are supplied with factory fitted PVC ramped edging to four sides

### Tolerances:

	Height (+/- 0.05")	Lengths (0+1.0')	Widths (+/- 1/2")
Tuff Spun	3/8"	33'	2' 3' 4'
Tuff Spun Plus	3/8"	33'	3'

All dimensions are nominal

### Technical information:

Acoustic	Excellent sound absorption
Composition	Vinyl foam
Reversion	Thermoplastic shrinkage can result in size reductions up to 2%. This may be accelerated in hot environments. You can read more about the causes of shrinkage by <a href="#">downloading this information sheet</a>
Thermal	Designed to function at temperatures from -9°F and up to +140°F. Slight size variation may occur at temperature extremes
UV light	Resistant to PVC degradation
Wear rating	ASTM 4060: <1g loss.
Warranty	One year. Visit our <a href="#">policies page</a> for more information about warranties

### Installation:

Tuff Spun's one-piece construction means installation is simple:

- Comes in rolls or modules for quick installation
- Easy to cut to size and shape
- No special tools needed

### Cleaning:

Keeping Tuff Spun looking good is easy:

- Light to handle
- Simply lift or roll to clean
- Easy to clean and maintain

# Tuff Spun

## Data sheet



### Colors:



Dark gray



Black



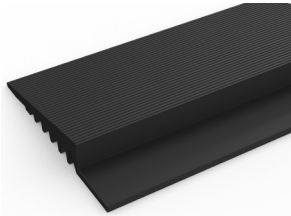
Black with yellow edging

More colors  
available  
upon request

### Ancillaries:

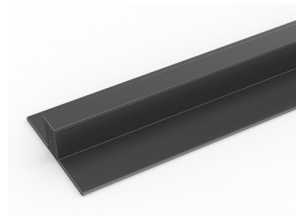
#### > Tuff Spun

PVC edging (H: 3/8", W: 2")



Supplied in rolls of 33' (10.1m) length with cold welding paste. Comes in black and dark gray. Size: 3/8" x 2" x 33' (10mm x 50mm x 10.1m)

PVC snap track (H: 3/8")



Two-part snap track that can be welded together to join rolls end-to-end or side-to-side to cover large areas. Supplied with cold welding paste. Comes in dark gray and black. Size: 13/32" x 8'2" (10.5mm x 2.5m)