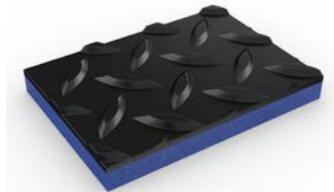


Anti-fatigue and slip-resistant workplace matting in a checker-plate design.



Versatile and incredibly durable, Zed Chex provides both comfort underfoot and excellent slip resistance.

Our patented high density foam has been thermally fused with a robust, checker-plate design to create a multi-purpose mat that can be used in any environment. Resistant to chemicals, oils and acids, Zed Chex is ideal for workplaces where employees need cushioning underfoot and there's light spillages and debris.



Features:



Made from minimal-wear foam that won't deaden



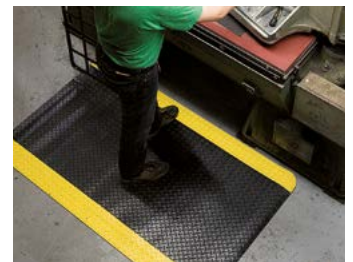
Checker plate vinyl surface



Patented foam construction



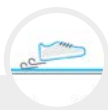
Comes in 18m (60') rolls and standard modules



Benefits:



High wear resistance and resilience



Extra slip resistance



Reduces standing fatigue and boosts productivity



Quick to install



Plastic Extruders Ltd.

Russell Gardens, Wickford
Essex, SS11 8DN
+44 (0) 1268 571 116

UK + USA manufactured
matting products:
plastexmatting.com



Standard sizes:

| Product | Zed Chex | Zed Chex Plus |
|------------------------|--------------------------------------|--------------------------------------|
| Height | 13mm (1/2") | 13mm (1/2") |
| Standard roll option | 18 x 0.91m (60' x 3') | 18 x 0.91m (60' x 3') |
| Standard module option | 0.6 x 0.91m (2' x 3') | 0.6 x 0.91m (2' x 3') |
| | 0.91 x 1.5m (3' x 5') | 0.91 x 1.5m (3' x 5') |
| | 0.91 x 3m (3' x 10') | 0.91 x 3m (3' x 10') |
| | 0.91 x 6m (3' x 20') | 0.91 x 6m (3' x 20') |
| Weight | 7.4kg/m ² (1.5 lb/sq.ft.) | 7.4kg/m ² (1.5 lb/sq.ft.) |

Surface modules are supplied with factory fitted PVC ramped edging to four sides

Tolerances:

| | Height (+/- 0.5mm) | Lengths (0+ 0.3m) | Widths (+/- 1cm) |
|--------------------------|--------------------|-------------------|------------------|
| Zed Chex / Zed Chex Plus | 13mm | 18m | 91cm |

All dimensions are nominal

Technical information:

| | |
|--------------|---|
| Acoustic | Excellent sound absorption |
| Anti-fatigue | ASTM D2362 = 23 |
| Composition | Vinyl foam/vinyl wear layer. |
| Environment | Phthalate free. |
| Thermal | Designed to function at temperatures from -23°C and up to +60°C. Slight size variation may occur at temperature extremes. |
| Warranty | Two years. Visit our policies page for more information about warranties |

Installation:

Zed Chex's interlocking system means installation is simple:

- Comes in rolls or modules for quick installation
- Easy to cut to size and shape
- No special tools needed

Cleaning:

Keeping Zed Chex looking good is easy:

- Easy to handle
- Simply lift or roll to clean with a high pressure hose

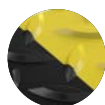
Colours:



Black



Grey



Black with yellow edging
Zed Chex Plus

More colours
available
upon request