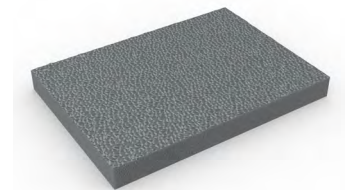


## Anti-fatigue matting with built-in 'bounce' for extra comfort underfoot



**Up to four times more effective than standard foam matting, Zed Land is made from high molecular density foam that bounces back for extra comfort and cushioning.**

Zed Land significantly reduces standing fatigue, helping to aid concentration and boost productivity. It also reduces the impact of noise, and provides protection against anything that might be accidentally dropped. Made from anti-static materials and ESD certified, it's also the ideal matting for anywhere that has ESD sensitive equipment.



### Features:



Made from minimal-wear foam that won't deaden



Embossed pebble surface



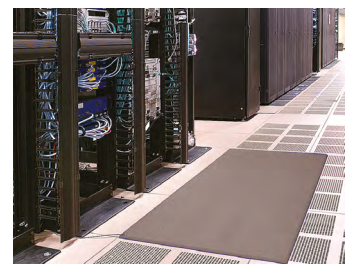
Patented foam construction



Electrostatic dissipative (ESD) properties



Comes in 60' (18m) rolls and standard modules



### Benefits:



Certified wear resistant (ASTM 4060:  $\leq 1.5\%$ )



Good slip resistance



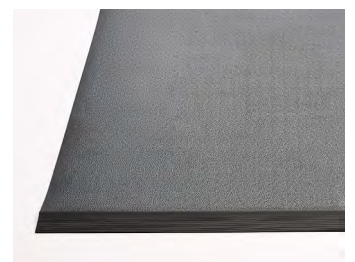
Reduces standing fatigue and boosts productivity



Underfoot comfort in static sensitive environments



Quick to install



### Plastex Matting Inc.

120 55th St NE  
Fort Payne, AL 35967  
+1 256 845 7725

USA + UK manufactured  
matting products:  
[plastexmatting.com](http://plastexmatting.com)

### Standard sizes:

<b>Product</b>	<b>Zed Land</b>
<b>Height</b>	3/8" (9mm)
<b>Standard roll option</b>	60' x 3' (18 x 0.91m)
<b>Standard module option</b>	2' x 3' (0.6 x 0.91m)
	3' x 5' (0.91 x 1.5m)
	3' x 10' (0.91 x 3m)
<b>Weight</b>	0.74 lbs/sq.ft (3.3 kg/m2)

Surface modules are supplied with factory fitted PVC ramped edging to four sides

### Tolerances:

	<b>Height (+/- 0.05")</b>	<b>Length (0+1.0')</b>	<b>Widths (+/- 1/2")</b>
<b>Zed Land</b>	3/8"	60'	3'

All dimensions are nominal

### Technical information:

<b>Acoustic</b>	Excellent sound absorption
<b>Anti-fatigue I</b>	ASTM D2362 = 33
<b>Composition</b>	Vinyl foam/vinyl wear layer.
<b>Electrostatic discharge (ESD)</b>	ASTM D257: 10^9
<b>Thermal</b>	Designed to function at temperatures from -9°F and up to -140°F. Slight size variation may occur at temperature extremes.
<b>Wear rating</b>	ASTM 4060: ≤1.5%
<b>Warranty</b>	Total confidence warranty. Visit our <a href="#">policies page</a> for more information about warranties

### Installation:

Zed Land's interlocking system means installation is simple:

- Comes in rolls or modules for quick installation
- Easy to cut to size and shape
- No special tools needed

### Cleaning:

Keeping Zed Land looking good is easy:

- Easy to handle
- Simply lift or roll to clean with a high pressure hose

Colors:

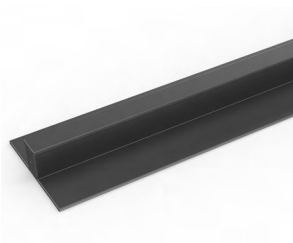


More colors  
available  
upon request

Ancillaries:

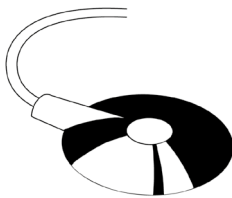
> Zed Land

PVC snap track (H: 3/8")



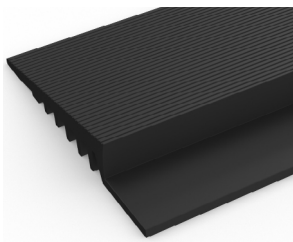
Two-part snap track that can be welded together to join rolls end-to-end or side-to-side to cover large areas. Supplied with cold welding paste. Comes in dark gray and black. Size: 1 3/32" x 8'2" (10.5mm x 2.5m)

ESD screw fit earthing lead



Supplied in 14'9" (4.5m) lengths

PVC edging (H: 3/8", W: 2")



Supplied in rolls of 33' (10.1m) length with cold welding paste. Comes in black and dark gray. Size: 3/8" x 2" x 33' (10mm x 50mm x 10.1m)