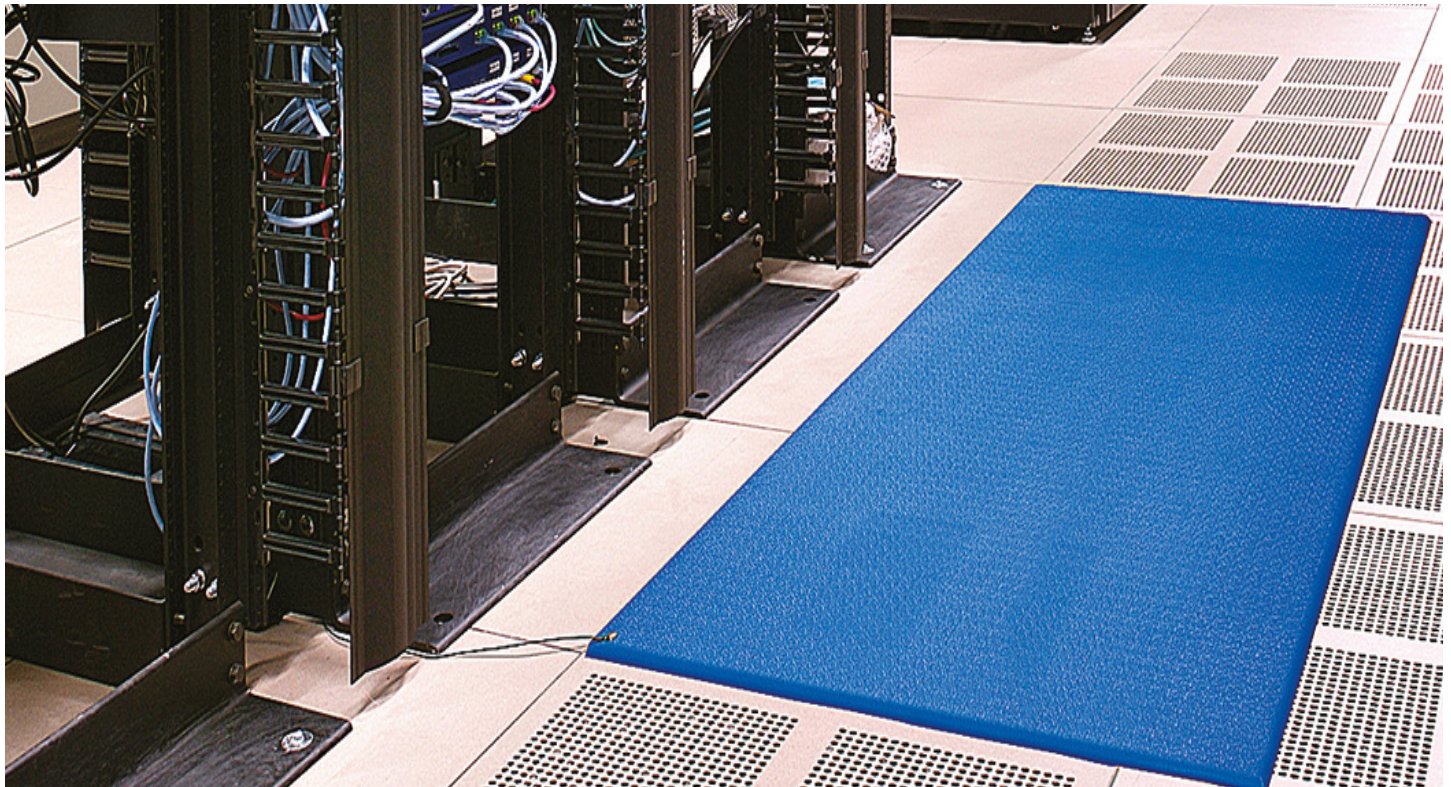
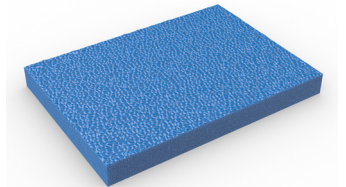


Anti-fatigue matting with built-in 'bounce' for extra comfort underfoot.



Up to four times more effective than standard foam matting, Zed Land is made from high molecular density foam that bounces back for extra comfort and cushioning.

Zed Land significantly reduces standing fatigue, helping to aid concentration and boost productivity. It reduces the impact of noise, and provides protection against anything that might be accidentally dropped. Made from anti-static materials and ESD certified, it's also the ideal matting for anywhere that has ESD sensitive equipment.



## Features:



Made from minimal-wear foam that won't deaden



Embossed pebble surface



Patented foam construction



Electrostatic dissipative (ESD) properties



Comes in 18m (60') rolls and standard modules



## Benefits:



Certified wear resistant (ASTM 4060:  $\leq 1.5\%$ )



Good slip resistance



Reduces standing fatigue and boosts productivity



Underfoot comfort in static sensitive environments



Quick to install



## Plastic Extruders Ltd.

Russell Gardens, Wickford  
Essex, SS11 8DN  
+44 (0) 1268 571 116

UK + USA manufactured  
matting products:  
[plastexmatting.com](http://plastexmatting.com)



### Standard sizes:

<b>Product</b>	Zed Land ESD
<b>Height</b>	9mm (3/8")
<b>Standard roll option</b>	18 × 0.91m (60' × 3')
<b>Standard module option</b>	0.6 × 0.91m (2' × 3')
	0.91 × 1.5m (3' × 5')
	0.91 × 3m (3' × 10')
<b>Weight</b>	3.3kg/m <sup>2</sup> (0.74 lbs/sq.ft)

Surface modules are supplied with factory fitted PVC ramped edging to four sides

### Tolerances:

	Height (+/- 0.5mm)	Length (0+0.3m)	Widths (+/- 1cm)
Zed Land ESD	9 mm	18 m	91 cm

All dimensions are nominal

### Technical information:

<b>Acoustic</b>	Excellent sound absorption
<b>Anti-fatigue I</b>	ASTM D2362 = 33
<b>Composition</b>	Vinyl foam/vinyl wear layer.
<b>Electrostatic discharge (ESD)</b>	ASTM D257: 10 <sup>9</sup>
<b>Thermal</b>	Designed to function at temperatures from -23°C and up to +60°C. Slight size variation may occur at temperature extremes.
<b>Wear rating</b>	ASTM 4060: ≤1.5%
<b>Warranty</b>	Total confidence warranty. Visit our <a href="#">policies page</a> for more information about warranties

### Installation:

Zed Land ESD's interlocking system means installation is simple:

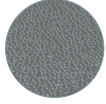
- Comes in rolls or modules for quick installation
- Easy to cut to size and shape
- No special tools needed

### Cleaning:

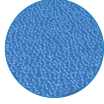
Keeping Zed Land ESD looking good is easy:

- Easy to handle
- Simply lift or roll to clean with a high pressure hose

### Colours:



Dark grey



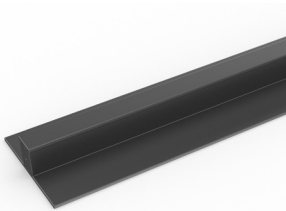
Blue

More colours  
available  
upon request

### Ancillaries:

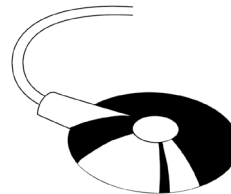
#### > Zed Land ESD

PVC snap track (H: 10.5mm)



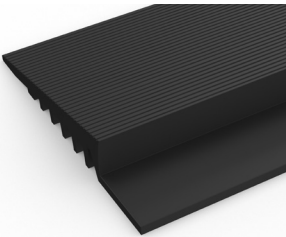
Two-part snap track that can be welded together to join rolls end-to-end or side-to-side to cover large areas. Supplied with cold welding paste. Comes in dark grey. Size: 10.5mm x 2.5m (13/32" x 8'2")

ESD screw fit earthing lead



Supplied in 4.5m (14'9") lengths

PVC edging (H: 10mm, W: 50mm)



Supplied in rolls of 10.1m (33') length with cold welding paste. Comes in black and dark grey. Size: 10mm x 50mm x 10.1m (3/8" x 2" x 33')