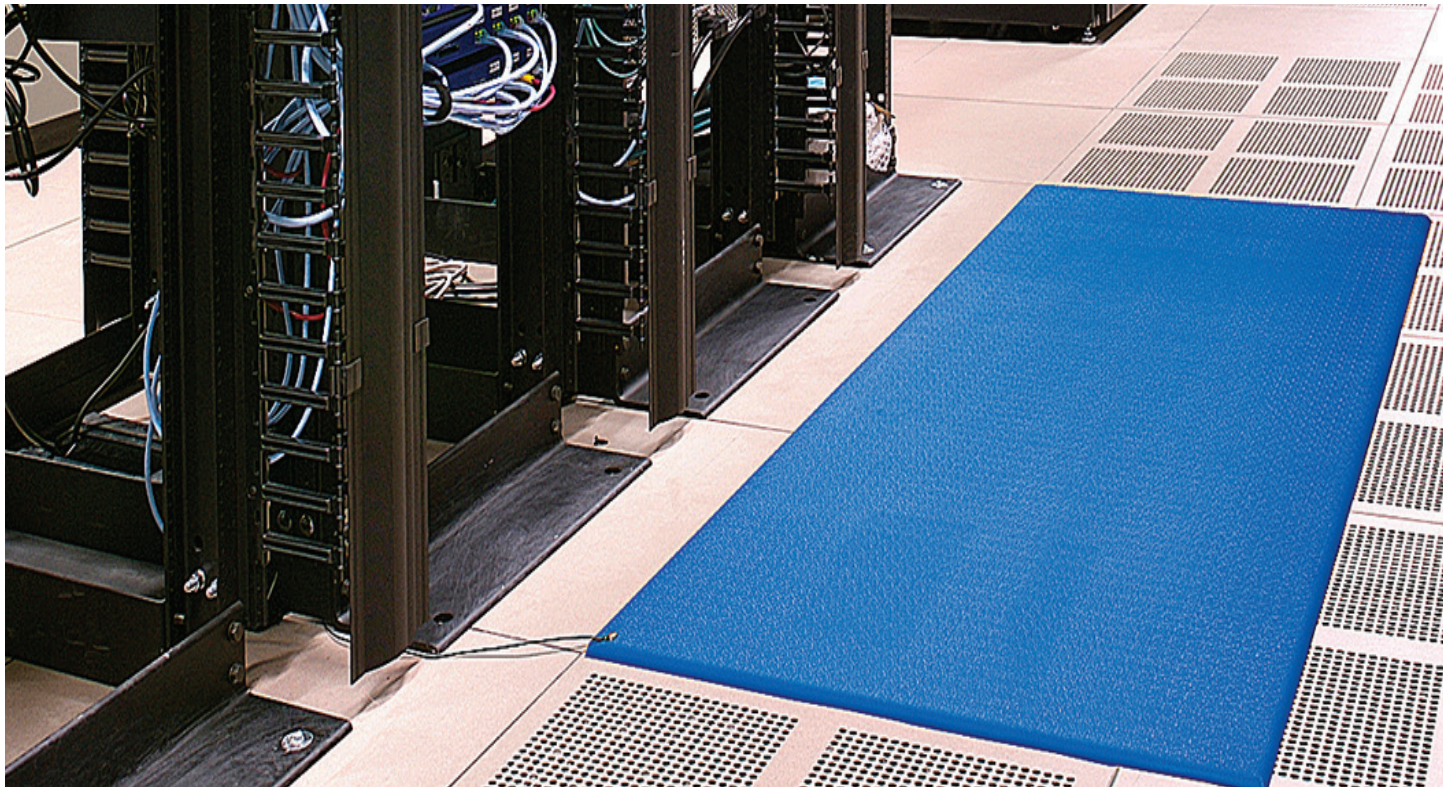
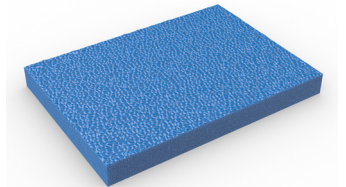


Anti-fatigue and ESD matting with built-in 'bounce' for extra comfort underfoot – even in static sensitive environments.



Up to four times more effective than standard foam matting, Zed Land ESD is made from high molecular density foam that bounces back for extra comfort and cushioning.

Zed Land ESD has been proven to significantly reduce standing fatigue, which helps to aid concentration and boost productivity. Made from anti-static materials and ESD certified, it's the ideal matting for anywhere that has ESD sensitive equipment. It also reduces the impact of noise, and provides protection against anything that might be accidentally dropped.



## Features:



Made from minimal-wear foam that won't deaden



Embossed pebble surface



Patented foam construction



Electrostatic dissipative (ESD) properties



Comes in 18m (60') rolls and standard modules



## Benefits:



Certified wear resistant (ASTM 4060:  $\leq 1.5\%$ )



Good slip resistance



Reduces standing fatigue and boosts productivity



Underfoot comfort in static sensitive environments



Quick to install



## Plastic Extruders Ltd.

Russell Gardens, Wickford  
Essex, SS11 8DN  
+44 (0) 1268 571 116

UK + USA manufactured  
matting products:  
[plastexmatting.com](http://plastexmatting.com)

### Standard sizes:

Product	Zed Land
Height	9mm (3/8")
Standard roll option	18 × 0.91m (60' × 3')
Standard module option	0.6 × 0.91m (2' × 3')
	0.91 × 1.5m (3' × 5')
	0.91 × 3m (3' × 10')
Weight	3.3kg/m <sup>2</sup> (0.74 lbs/sq.ft)

Surface modules are supplied with factory fitted PVC ramped edging to four sides

### Tolerances:

	Height (+/- 0.5mm)	Length (0+0.3m)	Widths (+/- 1cm)
Zed Land	9 mm	18 m	91 cm

All dimensions are nominal

### Technical information:

Acoustic	Excellent sound absorption
Anti-fatigue I	ASTM D2362 = 33
Composition	Vinyl foam/vinyl wear layer.
Electrostatic discharge (ESD)	ASTM D257: 10 <sup>9</sup>
Thermal	Designed to function at temperatures from -23°C and up to +60°C. Slight size variation may occur at temperature extremes.
Wear rating	ASTM 4060: ≤1.5%
Warranty	Total confidence warranty. Visit our <a href="#">policies page</a> for more information about warranties

### Installation:

Zed Land's interlocking system means installation is simple:

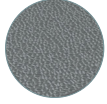
- Comes in rolls or modules for quick installation
- Easy to cut to size and shape
- No special tools needed

### Cleaning:

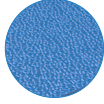
Keeping Zed Land looking good is easy:

- Easy to handle
- Simply lift or roll to clean with a high pressure hose

### Colours:



Dark grey



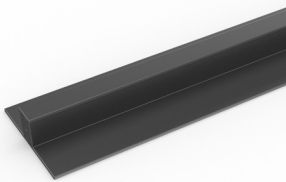
Blue

More colours  
available  
upon request

### Ancillaries:

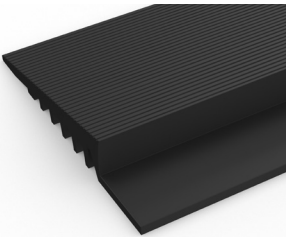
#### > Zed Land

PVC snap track (H: 10.5mm)



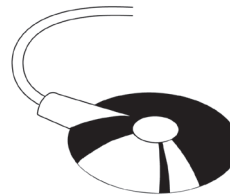
Two-part snap track that can be welded together to join rolls end-to-end or side-to-side to cover large areas. We recommend one tube of cold welding paste for every 10m of edging. Comes in dark grey. Size: 10.5mm x 2.5m (13/32" x 8'2")

PVC edging (H: 10mm, W: 50mm)



Supplied in rolls of 10.1m (33') length. One tube of cold welding paste recommended for every 10m of edging. Comes in black and dark grey. Size: 10mm x 50mm x 10.1m (3/8" x 2" x 33')

ESD screw fit earthing lead



Supplied in 4.5m (14'9") lengths